



# WORLDWIDE ELECTRIC MOTOR DATA SHEET

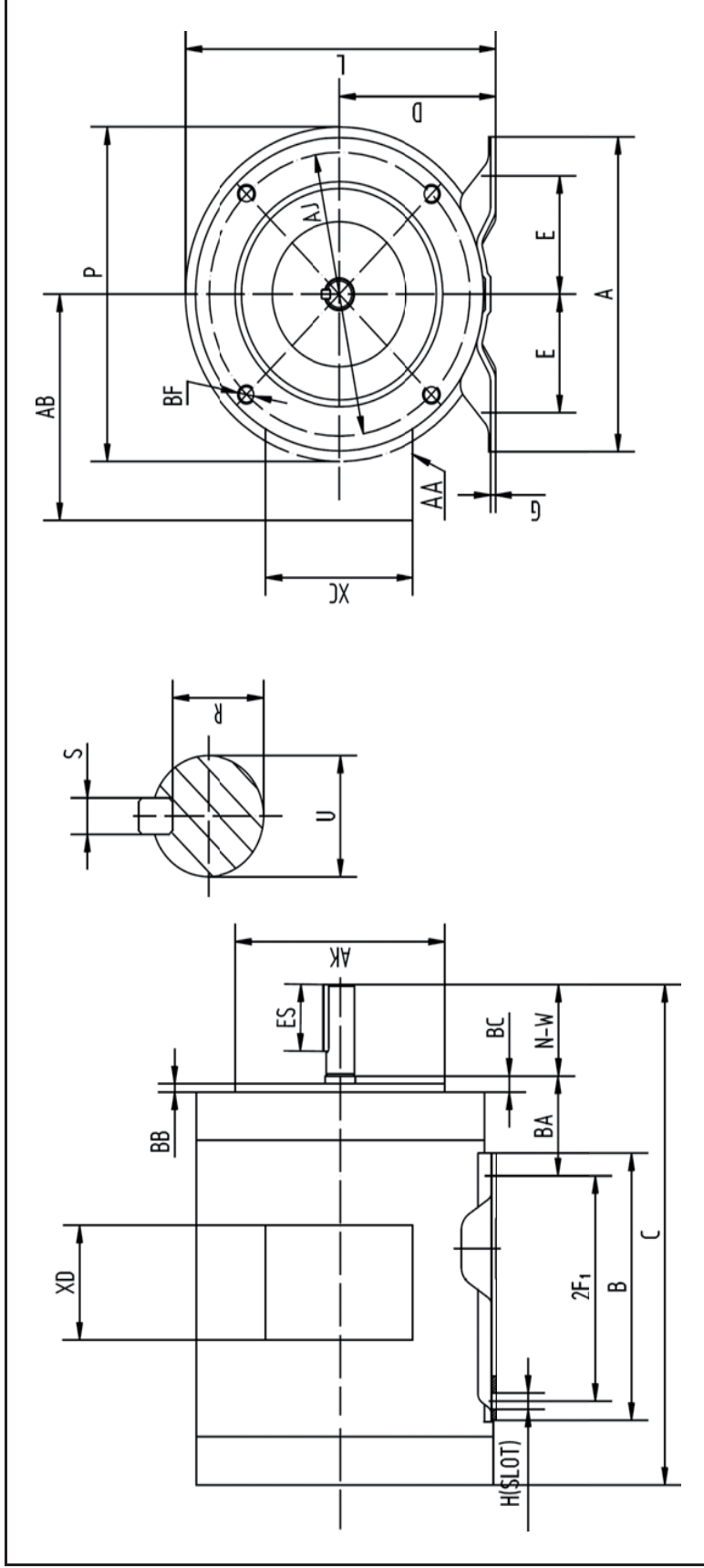


## WSSNV1-18-56CB

|                              |                              |
|------------------------------|------------------------------|
| HP                           | 1                            |
| RPM / POLES                  | 1800 / 4                     |
| VOLTAGE / PHASE              | 230 / 460 V / 3              |
| FRAME                        | 56C                          |
| ENCLOSURE                    | TENV / IP56                  |
| FREQUENCY                    | 60 HZ                        |
| RATED SPEED                  | 1740 RPM                     |
| FULL LOAD AMPS               | 3.2 / 1.6 A                  |
| DUTY CYCLE                   | CONTINUOUS                   |
| SERVICE FACTOR               | 1.15                         |
| INSULATION CLASS             | F                            |
| RATED TORQUE                 | 3.0 LB. FT.                  |
| LOCKED ROTOR TORQUE          | 240%                         |
| BREAKDOWN TORQUE             | 331%                         |
| LOCKED ROTOR AMPS (STARTING) | 19.6 / 9.8 A                 |
| NO LOAD CURRENT              | 1.22 / 0.61 A                |
| BASE TYPE                    | C-FACE - RIGID               |
| SHAFT                        | KEYED                        |
| DE BEARING                   | 6205 DDU                     |
| ODE BEARING                  | 6205 DDU                     |
| MOUNTING                     | F1                           |
| ROTATION                     | CW / CCW                     |
| OVERLOAD                     | ---                          |
| START CAPACITOR              | ---                          |
| RUN CAPACITOR                | ---                          |
| WIRE TYPE                    | LOOSE WIRE                   |
| WIRE HOUSING                 | JUNCTION BOX                 |
| ROTOR INERTIA                | 0.09150 LB. FT. <sup>2</sup> |
| SHAFT MATERIAL               | 304 STAINLESS STEEL          |
| CONNECTION DIAGRAM           | 230 / 460 V - 9 LEAD Y       |
| APPROX. WEIGHT               | 36 LBS.                      |
| POWER FACTOR                 | 0.78                         |
| FL EFFICIENCY                | 84.0%                        |



WORLDWIDE ELECTRIC MOTOR DRAWING  
**WSSNV1-18-56CB**



| MOUNTING |     |      |      |
|----------|-----|------|------|
| E        | 2F1 | H    | BA   |
| 2.44     | 3   | 0.34 | 2.75 |

| A   | B   | C     | D   | G    | L    | P   | AA   | AB   |
|-----|-----|-------|-----|------|------|-----|------|------|
| 6.5 | 6.5 | 10.59 | 3.5 | 0.12 | 6.75 | 6.5 | 0.86 | 5.75 |

| KEY  |       | KEYSEAT |
|------|-------|---------|
| ES   | S     | R       |
| 1.41 | 0.188 | 0.517   |

| FLANGE |     |      | SHAFT  |      |       | TERMINAL BOX |     |  |
|--------|-----|------|--------|------|-------|--------------|-----|--|
| AJ     | AK  | BB   | BF     | N-W  | U     | XC           | XD  |  |
| 5.875  | 4.5 | 0.16 | 3/8-16 | 1.88 | 0.625 | 4.72         | 3.8 |  |

ALL DIMENSIONS IN INCHES