



WORLDWIDE ELECTRIC MOTOR DATA SHEET



WSS2-36-56CB

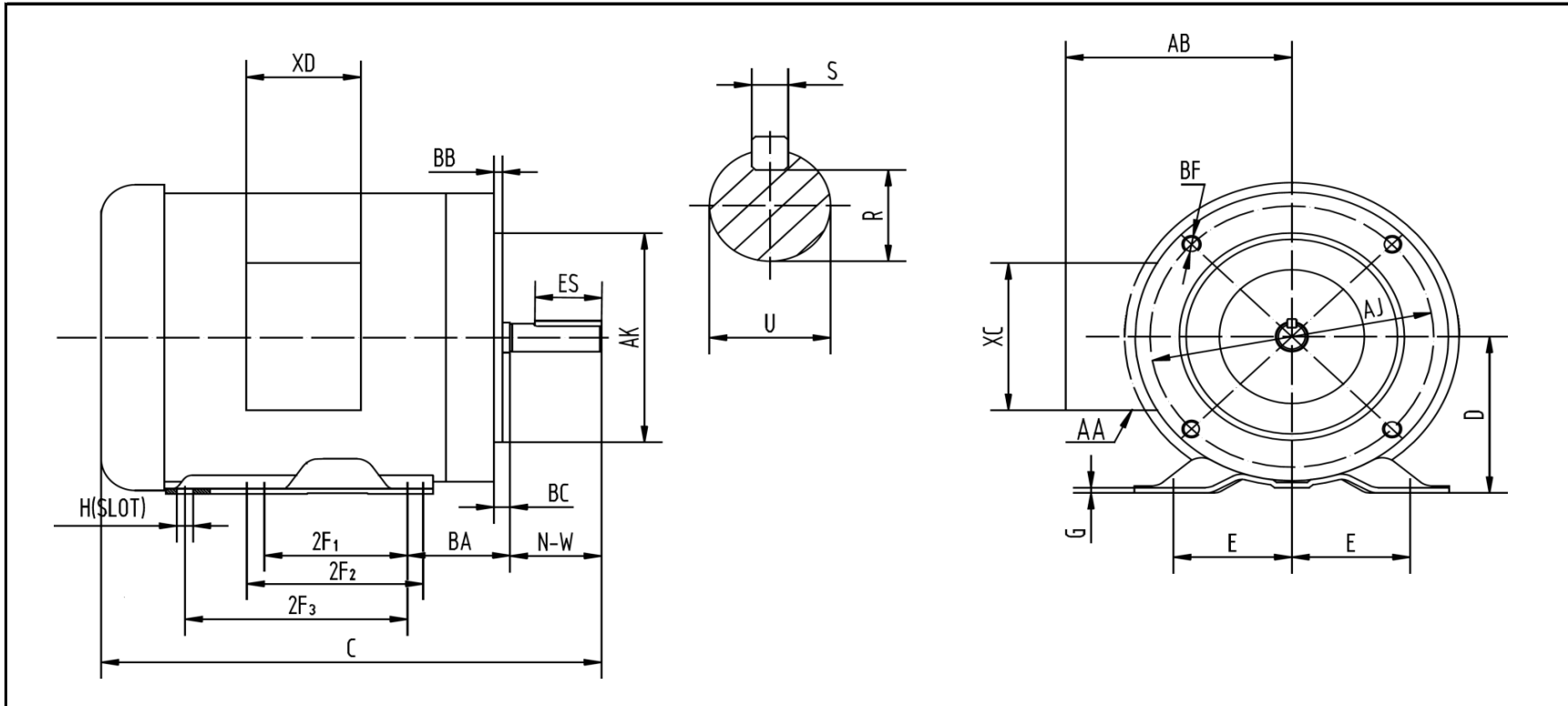
| | |
|------------------------------|------------------------------|
| HORSEPOWER | 2 |
| RPM / POLES | 3600 / 2 |
| VOLTAGE / PHASE | 230 / 460 V / 3 |
| FRAME | 56C |
| ENCLOSURE | TEFC / IP56 |
| FREQUENCY | 60 HZ |
| FULL LOAD SPEED | 3480 RPM |
| SERVICE FACTOR | 1.15 |
| INSULATION CLASS | F |
| FULL LOAD AMPS | 4.8 / 2.4 A |
| LOCKED ROTOR AMPS (STARTING) | 36.0 / 18.0 A |
| NO LOAD CURRENT | 1.7 / 0.85 A |
| EFFICIENCY (100% LOAD) | 80.0% |
| POWER FACTOR (100% LOAD) | 0.72 |
| DUTY CYCLE | CONTINUOUS |
| FULL LOAD TORQUE | 2.9 LB. FT. |
| LOCKED ROTOR TORQUE | 261% |
| BREAKDOWN TORQUE | 332% |
| DE BEARING | 6205 DDU |
| ODE BEARING | 6205 DDU |
| MOUNTING | F1 |
| ROTATION | CW / CCW |
| BASE TYPE | C-FACE - RIGID |
| SHAFT | KEYED |
| OVERLOAD | --- |
| START CAPACITOR | --- |
| RUN CAPACITOR | --- |
| WIRE TYPE | LOOSE WIRE |
| WIRE HOUSING | JUNCTION BOX |
| ROTOR INERTIA | 0.10703 LB. FT. ² |
| SHAFT MATERIAL | 304 STAINLESS STEEL |
| CONNECTION DIAGRAM | 230 / 460 V - 9 LEAD Y |
| APPROXIMATE WEIGHT | 46 LBS. |
| INVERTER RATING | 2:1 CT / 5:1 VT PWM Type |





WORLDWIDE ELECTRIC MOTOR DRAWING

WSS2-36-56CB



| MOUNTING | | | | | | C | D | G | AA | AB | BC |
|----------|-----|-----|-----|------|------|-------|-----|------|------|------|------|
| E | 2F1 | 2F2 | 2F3 | H | BA | | | | | | |
| 2.44 | 3 | 4 | 5 | 0.34 | 2.75 | 13.84 | 3.5 | 0.12 | 0.86 | 5.39 | 0.19 |

| KEY | | KEYSEAT | FLANGE | | | | SHAFT | | TERMINAL BOX | |
|------|-------|---------|--------|-----|------|--------|-------|-------|--------------|------|
| ES | S | R | AJ | AK | BB | BF | N-W | U | XC | XD |
| 1.41 | 0.188 | 0.517 | 5.875 | 4.5 | 0.16 | 3/8-16 | 1.88 | 0.625 | 4.72 | 3.82 |

ALL DIMENSIONS IN INCHES

REVISED - 09/29/15