

DATA SHEET

Premium Efficiency Motor: **PEWWE25-36-256TSC**

60 Hz

WorldWide Electric Corporation

1 (800) 808-2131

Worldwideelectric.net



Document Generated: 14-Oct-2024
Document ID:

Customer:

MOTOR INFORMATION	
HP	25
RPM	3600
Phase	3
Frequency	60 Hz
Voltage	230/460 V
Frame Size	256TSC
Enclosure	TEFC
Degree of Protection	IP55
Service Factor	1.25
Poles	2
Full Load Speed	3540
Insulation Class	F
Temp Rise	80°C
NEMA Code Letter	G
Duty Cycle	S1 / Continuous
Slip	1.25%
NEMA Design	B
Moment of Inertia	1.35 lb.ft.^2
Locked Rotor Time (Hot)	8 seconds
Sound Pressure Level	72 dB(A)
Number of Starts	2 Cold/ 1 Hot
Max Ambient Temperature	40°C
Max Elevation	1000 m.a.s.l (3300 f.a.s.l)
Mounting	F1
Rotation	Bi-Directional
Area of Classification	Class 1 Division 2 Groups A,B,C,D T3C(160°C)
Inverter Rating	10:1 CT / 20:1 VT PWM Type
Standard	NEMA MG-1
Approvals	CSA-US, CE

EFFICIENCY/POWER FACTOR		
LOAD	EFF	P. F.
100%	91.7 %	0.89
75%	92.1 %	0.87
50%	91.6 %	0.82

TORQUE		
FULL LOAD	LRT	BDT
37.1 lb.ft.	170 %	230 %

AMPERAGE INFORMATION		
	230V	460V
Full Load Amps	57.4A	28.7A
Locked Rotor Amps	365A	182.5A
No Load Current	14A	7A
Usable at 208V	63.5A	

BEARING INFORMATION	
DE Bearing	6309 C3
ODE Bearing	6209 C3
Grease Type	SKF LGHP 2
DE Regreasing Interval	3000 Hours
ODE Regreasing Interval	3000 Hours

ADDITIONAL DATA	
F2 Suitable	Yes
Shaft Material	1045 Carbon Steel
Connection Diagram	230 / 460 V - 12 Lead Δ
Approximate Weight	309 lbs.

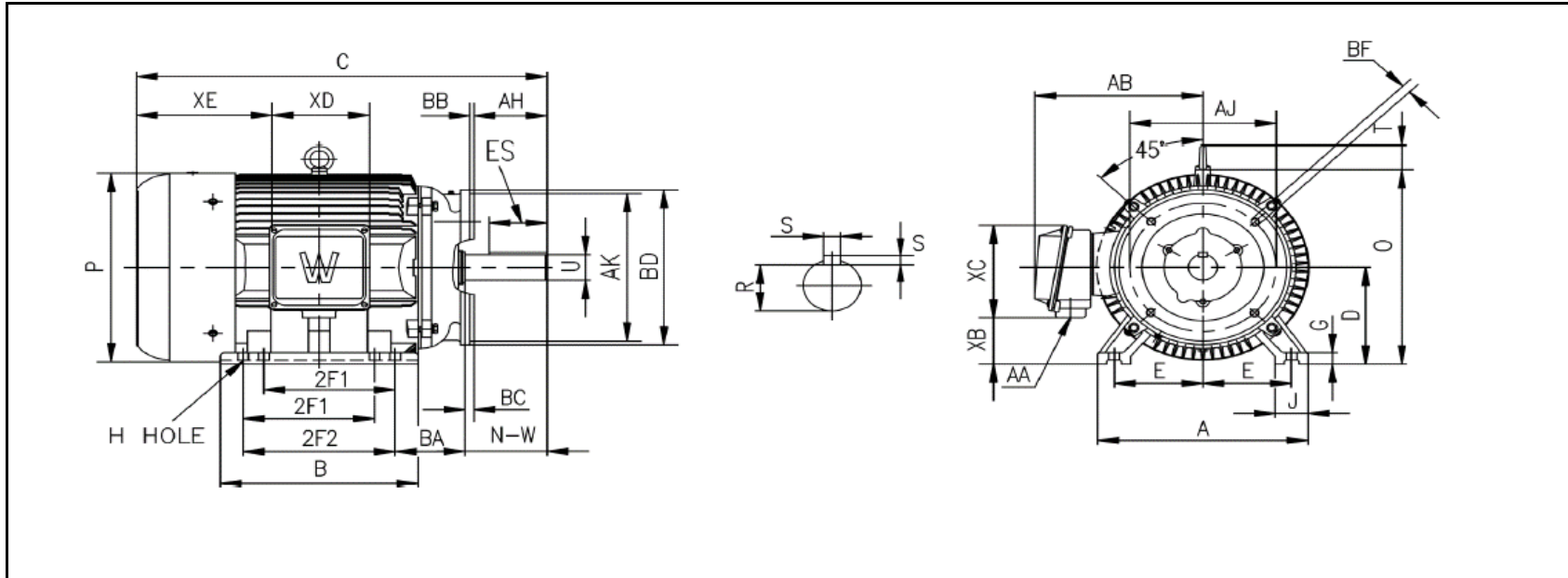
MOTOR DRAWING

Premium Efficiency Motor: **PEWWE25-36-256TSC**

WorldWide Electric Corporation

1 (800) 808-2131

Worldwideelectric.net



DIMENSION - INCHES

MOUNTING					A	B	C	D	G	J	P	O	T	AB
E	2F1	2F	H	BA										
5	8.25	10	0.53	4.25	12.5	12	24.6	6.25	0.79	2.4	12.6	12.9	2.05	10.5

SHAFT & KEY					
S	ES	R	N-W	AH	U
0.375	1.91	1.416	3.25	3	1.625

TERMINAL BOX				
AA	XB	XC	XD	XF
1.5	3	7.4	6.3	0

FLANGE					
AJ	AK	BB	BD	BF	BC
7.25	8.5	0.25	10	1/2-13	0.25

PERFORMANCE CURVES

WorldWide Electric Corporation

1 (800) 808-2131

Worldwideelectric.net



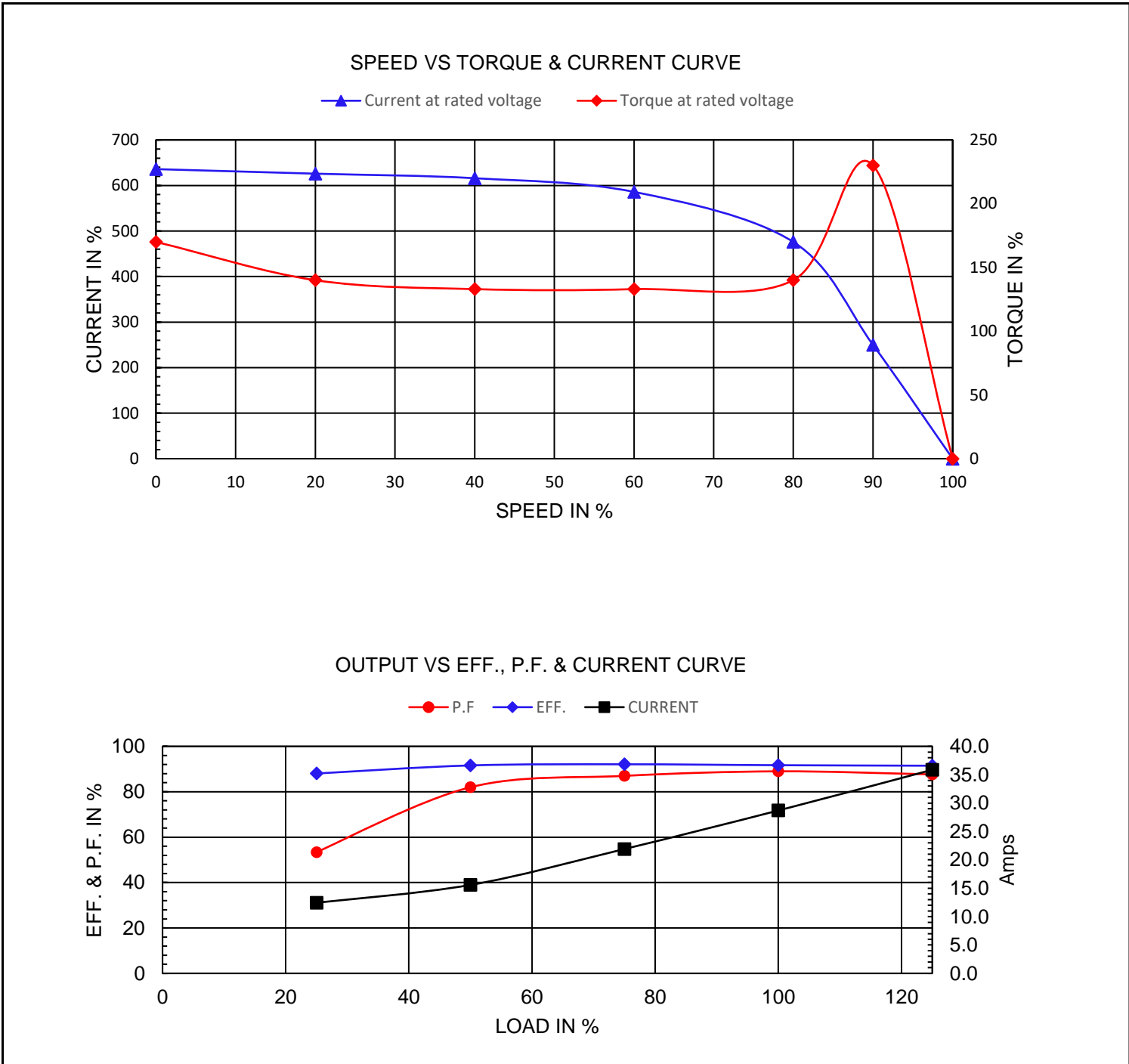
Premium Efficiency Motor:

PEWWE25-36-256TSC

Document Generated: 14-Oct-2024
 Document ID:

Customer:

Motor Type	PEWWE		FL Speed	3540	
Output Rating (HP)	25		LRT (%FLT)	170	460 volt FLA 28.7
Full Load Torque	37.1	lb.ft	BDT (%FLT)	230	230 volt FLA 57.4
Rotor Wk^2	1.35	lb-ft^2			



NAMEPLATE / WIRING

WorldWide Electric Corporation

1 (800) 808-2131

Worldwideelectric.net



WORLDWIDE
ELECTRIC CORPORATION

Premium Efficiency Motor:

PEWWE25-36-256TSC

Document Generated: 14-Oct-2024
Document ID:

Customer:

SAMPLE NAMEPLATE DATA

		3-PHASE INDUCTION MOTOR		259277 		
Model		Ser No.		Low Voltage 50Hz 1.0SF HP % V A rpm		
HP		S.F.		Rating	°C Amb Cont	
Frame		P.F.		IP		Encl
Voltage	230/460	Hz		Code		Type
Amps		RPM		Ins Cl		Design
Nom.Eff.	FL	% 3/4	%	10:1 CT	20:1 VT	PWM VFD 1.0SF
Class I DIV. 2 Groups A B C D		Amb.40°C		T3C(160°C)		
Class I Zone 2 IIC		Amb.55°C		T3A(180°C)		Date
Grease type: LGHP 2 (compatible with polyrex)		DE Brng		ODE Brng		
WorldWide Electric Corporation						

Model	PEWWE25-36-256TSC						
HP	25	S.F.	1.25	IP	IP55	Encl	TEFC
Frame	256TSC	P.F.	0.89	Code	G	Type	
Voltage	230/460 V	Hz	60 Hz	Ins Cl	F	Ambient	40°C
Amps	57.4/28.7	RPM	3540	Design	B	DE Brng	6309 C3
Nom.Eff.	FL	91.7%	3/4	92.1%		ODE Brng	6209 C3
Class 1 Division 2 Groups A,B,C,D				T3C(160°C)		Grease type: SKF LGHP 2	
50Hz							
25 HP		200/400 V		66.5/33 A		2935 rpm	
Eff. --%							