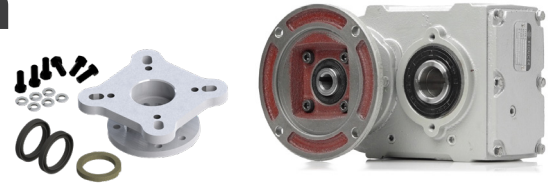




Screw Conveyor Conversion

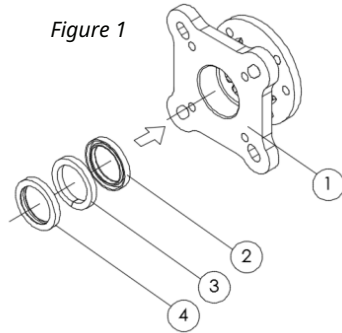
For WorldWide Electric FHN Series Parallel Shaft Helical Speed Reducers



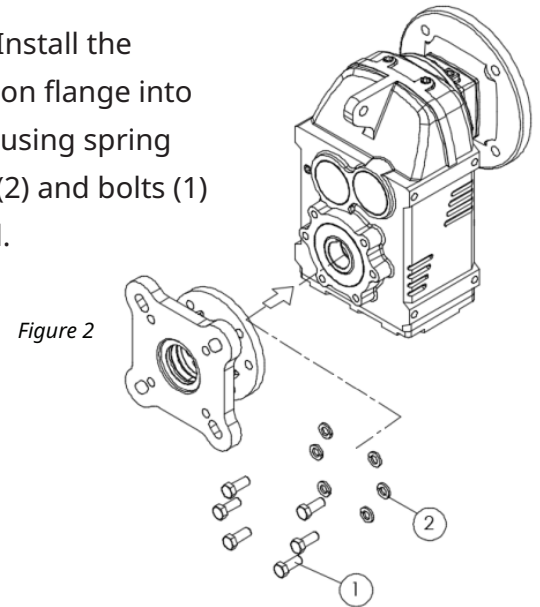
Instructions

Step 1 - Please follow the sequence of installing the oil seals first, and then the gland seal to complete the adapter assembly (Fig. 1)

1. Adapter
2. Oil seal
3. Gland seal
4. Oil seal



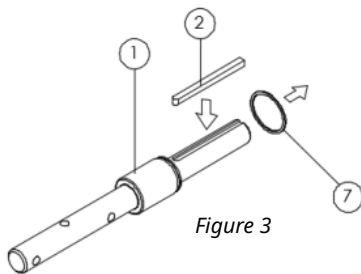
Step 2 - Install the Conversion flange into position using spring washers(2) and bolts (1) provided.



Step 3 - Install the key and shaft

1. Install the key (2) on the drive shaft (1).
2. Put the drive shaft through the hollow bore of gearbox installing Spacer (7) as needed

*Spacer (7) (for F47/F67/F97 only)



Step 4 - Fix the Drive Shaft

1. Install parts of 3~6 in order to fix the drive shaft.
 - Snap ring (3)
 - Retainer (4)
 - Spring washer (5)
 - Bolt (6)

