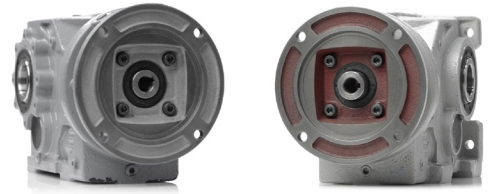




Power Lock Right Installation

For WorldWide Electric KHN/KAN Series Helical Bevel Gear Reducers



Right Side Instructions

1. Clean output shaft surface where to install the power lock, customer shaft and power lock; do NOT apply any lubricant between the output shaft and customer shaft. (Fig. 1)
2. Install power lock onto the output shaft. (Fig. 2)
3. Install customer shaft in the hollow output shaft. (Fig. 3 & 4)
4. Fasten Power Lock bolts in order (Fig. 5 & 6) shown below and apply fastening torques:
 - Apply 2.95Nm to fasten bolts in order (tightening angle 30°)
 - Apply 5.9Nm to fasten bolts in order.
 - Apply 11.8Nm to fasten bolts in order.
 - Check bolts are well tightened.

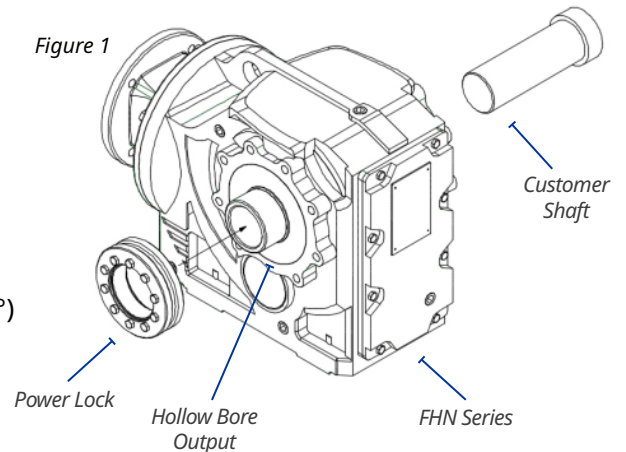


Figure 2

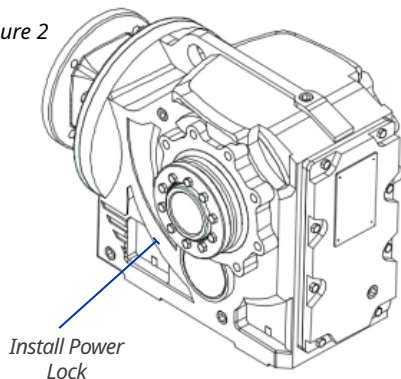


Figure 3

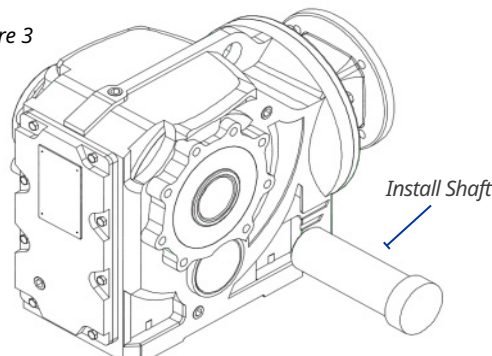


Figure 4

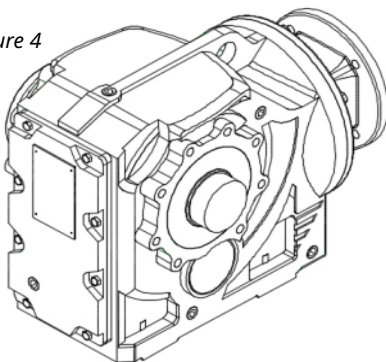


Figure 5

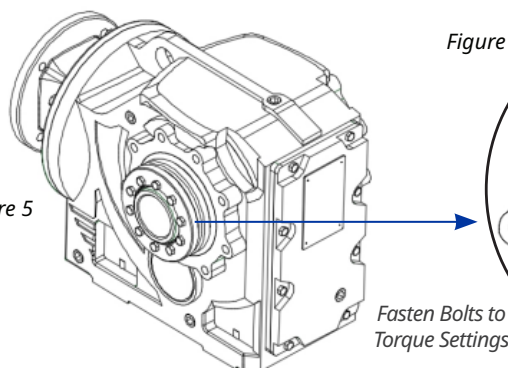
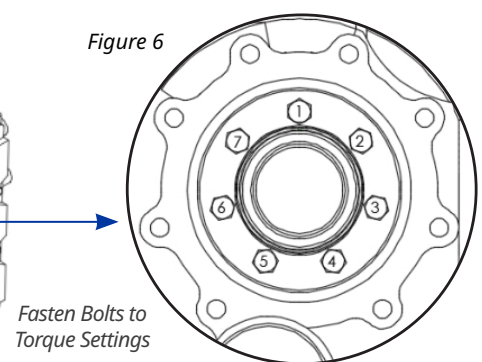


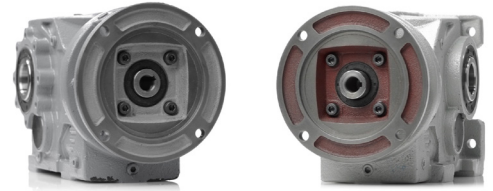
Figure 6





Power Lock Left Installation

For WorldWide Electric KHN/KAN Series Helical Bevel Gear Reducers



Left Side Instructions

1. Clean output shaft surface where to install the power lock, customer shaft and power lock; do NOT apply any lubricant between the output shaft and customer shaft. (Fig. 1)
2. Install power lock onto the output shaft. (Fig. 2)
3. Install customer shaft in the hollow output shaft. (Fig. 3 & 4)
4. Fasten Power Lock bolts in order shown below and apply fastening torques:
 - Apply 2.95Nm to fasten bolts in order (tightening angle 30°)
 - Apply 5.9Nm to fasten bolts in order.
 - Apply 11.8Nm to fasten bolts in order.
 - Check bolts are well tightened.

