



# Manufacturing

Reliable and Efficient Motors, Controls, Gear Reducers, and Generators

## Quality Products for a Diverse Range of Applications

Worldwide Electric's motors, controls, and speed reducers support a wide range of manufacturing applications and production processes. The manufacturing sector demands the most diversity and reliability for applications compared to all other industries. If equipment fails, operations can come to a halt. We understand the costs associated with equipment failure and downtime on a production line. That's why we have a wide range of quality and affordable products in stock and ready to ship. They are compatible with other manufacturers' equipment and are an ideal choice when you need to replace or upgrade existing equipment.



**Responsive**  
Service & Technical Support



**Quality Products**  
Competitive Pricing



**In Stock Availability**  
Warehouses Nationwide



**Fast Shipping**  
Same-Day Available

**(800) 808-2131**

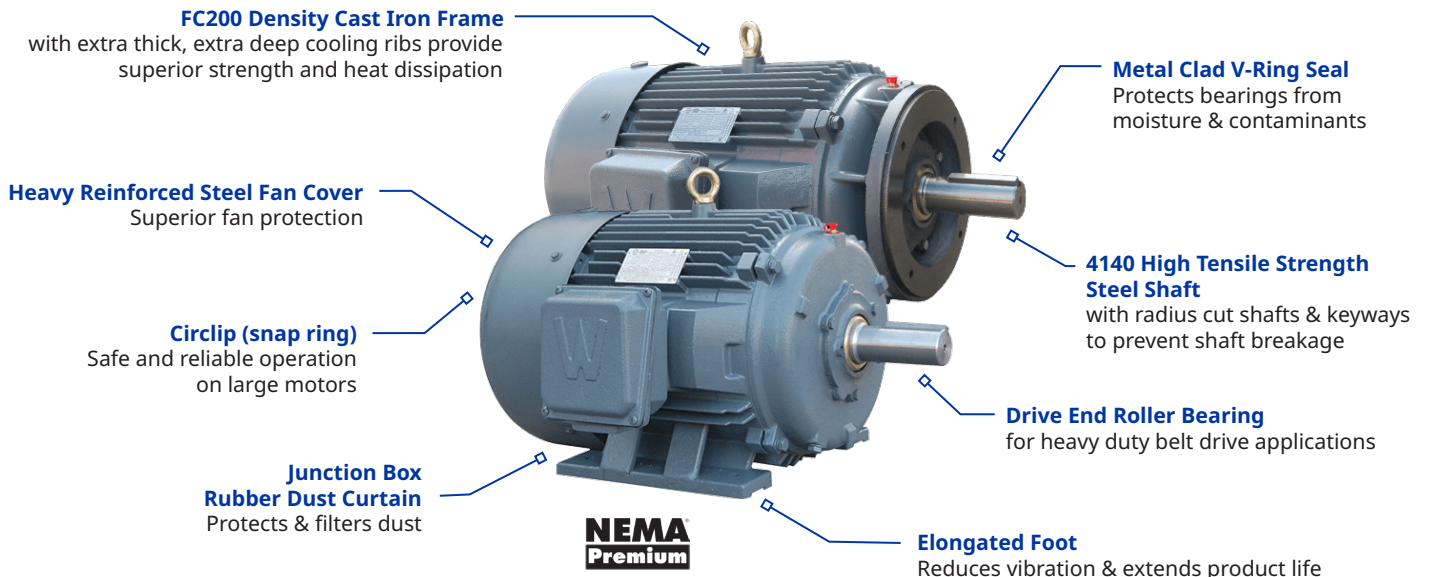
[worldwideelectric.com](http://worldwideelectric.com)

## Premium Efficient Motors for Sever Duty Applications

Our PEWWE Series Motors provide Reliable, high performance, and high starting and breakdown torques for high-impact, heavy-duty applications, such as crushing and compacting.

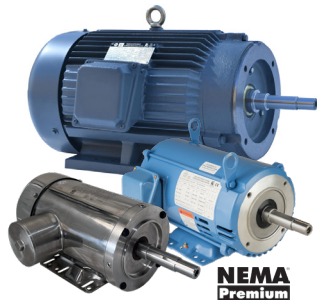
### Quick Specs

- 1-500 hp | 3600, 1800, 1200, 900 rpm
- Frame size 143T to 586/7, rigid base or C-Face with feet (TC)
- Up to 1.25 Service Factor
- Inverter duty, 10:1 CT / 20:1 VT (1.0 SF)
- IP55 protection | Class F insulation | CSA certified
- CC006A



## Closed-couple Pump Motors

Totally Enclosed Fan Cooled (TEFC) or Open Drip Proof Close-coupled pump motors are designed to meet or exceed EISA 2007 requirements for premium efficiency, making them ideal for industrial pumping applications, such as centrifugal pumps requiring JM or JP shafts.



- 1 to 50 hp | 3600 and 1800 rpm
- TEFC | IP 55 protection | Cast iron frame
- ODP | IP 23 protection | Rolled steel frame
- TEFC | Stainless Steel | 1 - 20 hp | BISSC and BEAG Cert.

## IEC Metric Motors

Designed for the needs of our customers utilizing equipment manufactured overseas. Our IEC motors operate at IE3 Efficiency at 50 Hz and are NEMA Premium Efficient at 60 Hz operation.

- Totally Enclosed Fan Cooled (TEFC) Enclosure
- ¼ to 25 hp
- 3600, 1800, and 1200 rpm
- 230/460 Volt, 60 Hz
- 190/380 Volt, 50 Hz
- IP55 protection, IEC60034-1 & CE Certified



## Aluminum Worm Gear Reducers

- NEMA and IEC input compatibility
- Box sizes 30 to 90
- 7.5:1 – 100:1 ratios
- One-piece aluminum alloy



## Gear Reducers

Our Shaft Mount, Worm, and Helical Bevel Gear Reducers directly replace existing equipment with quality and dependability, they are commonly used to transmit power to conveyors and material handling equipment.

### Shaft Mount Gear Reducers

- Box sizes 2-12
- 9:1, 15:1, 25:1 ratios
- All cast iron housings
- 1 - 15/16" to 6 - 1/2" hollow output bores
- Metal reinforced, double lip spring loaded oil seals
- 2-3 year warranties
- Dimensionally equivalent to TXT Series



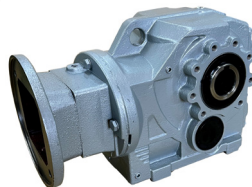
### Worm Gear Reducers

- Right angle applications
- Box sizes 133 to 325
- 10:1 to 60:1 ratios
- All cast iron housings, carbon steel shafts and aluminum bronze gear
- Dimensionally equivalent to Boston 700 Series



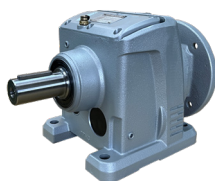
### Helical-Bevel Gear Reducers

- Box sizes 37 to 97 | ¾ to 30 hp
- 2:1 to 120:1 ratios (plus custom)
- All cast iron housings
- Hollow output bores
- NEMA C-Face, no coupling required
- Dimensionally equivalent to most European brands



### Helical-Inline Gear Reducers

- Box sizes 13 to 147 | ¼ to 100 hp
- 2:1 to 120:1 ratios (plus custom)
- NEMA C-Face, no coupling required
- Dimensionally equivalent to European R Series brand



## General Purpose Motors

Totally Enclosed Fan Cooled (TEFC) 56C/56J Frame motors with IP43 protection. Rigid base, C-Face with removable base (CB), or C-Face round body (CRD) options.



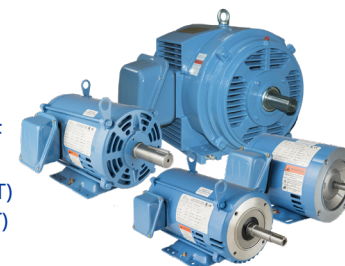
**NEMA Premium**  
\*NATE Series Only

### Fractional TEFC Motors

- 115/230 Volt | 1/8 - 2 hp
- 230/460 Volt | 1 - 3 hp | Premium efficiency
- IP43 protection
- Rigid base, C-Face with removable base (CB), or C-Face round body (CRD)

### Open Drip Proof Motors

- 1/2 to 200 hp
- 3600, 1800, and 1200 rpm
- 230/460 Volt at 60Hz | 1.15 SF
- Rolled steel frame (56 - 324/6T)
- Cast iron frame (364/5T - 444/5T)
- Double drilled feet (143T - 445T)
- IP 23 Protection



## Chassis and Packaged, Motor Soft Starters and Variable Frequency Drives

We offer configured and fully customizable options for complete motor control. They are UL-compliant, assembled, tested, and ready for operation before shipment. The heavy-duty enclosure protects in the most demanding outdoor environments.

- NEMA 3R, 4, & 12 enclosure options
- Choice of WorldDrive VFD or WorldStart Soft Starters
- Control motors from 1 to 800 hp
- Multiple sizes, features and configuration options
- Standard options in-stock ready for immediate delivery

