



Recycling & Waste

Reliable and Efficient Motors, Controls, Gear Reducers, and Generators

Quality Products for Moving, Crushing and Compacting.

If you own or manage a recycling facility, you probably use electric motors, gears, and motor controls for your operations - moving, crushing, and compacting. We have quality and affordable products in stock and ready to ship. They are compatible with other manufacturers' equipment and are an ideal choice when you need to replace or upgrade existing equipment. Contact your local distributor and ask for Worldwide Electric.

Contact:

Call:

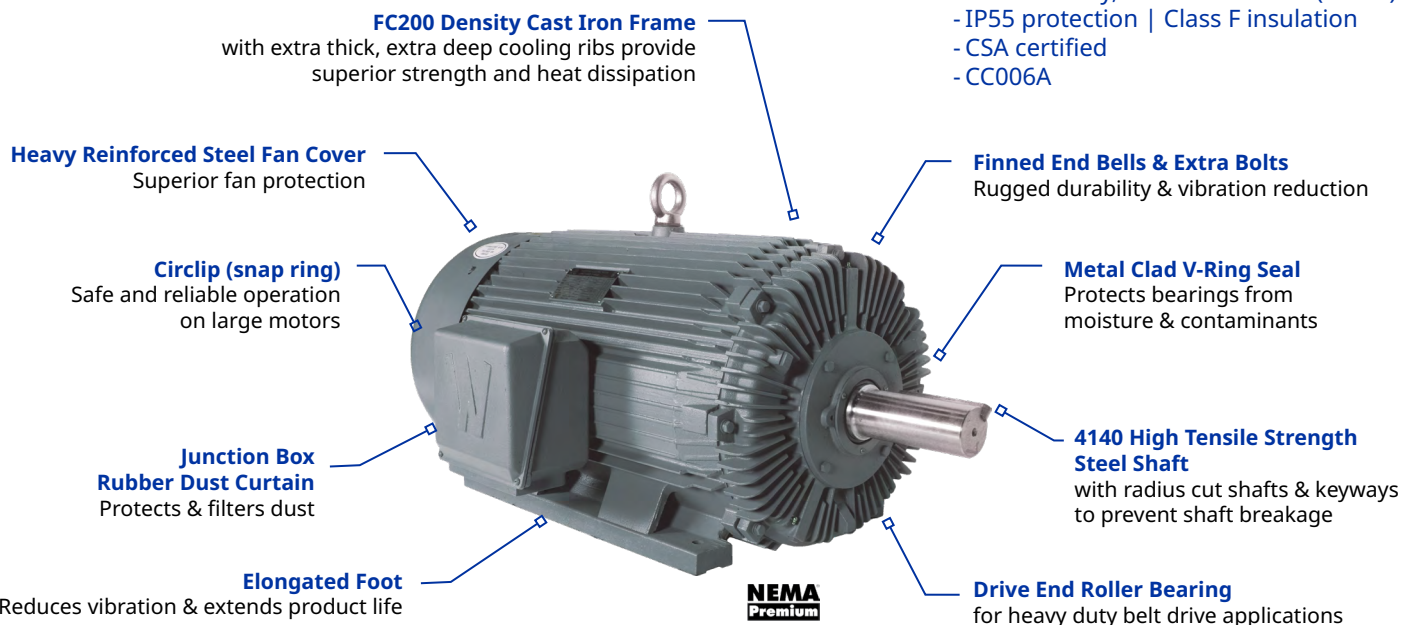
Email:

Premium Efficient Motors for Sever Duty Applications

Our PEWWE Series Motors provide Reliable, high performance, and high starting and breakdown torques for high-impact, heavy-duty applications, such as crushing and compacting.

Quick Specs

- 1-500 hp | 3600, 1800, 1200, 900 rpm
- Frame size 143T to 586/7, rigid base or C-Face with feet (TC)
- Up to 1.25 Service Factor
- Inverter duty, 10:1 CT / 20:1 VT (1.0 SF)
- IP55 protection | Class F insulation
- CSA certified
- CC006A



IEC Metric Motors

Designed for the needs of our customers utilizing equipment manufactured overseas. Our IEC motors operate at IE3 Efficiency at 50 Hz and are NEMA Premium Efficient at 60 Hz operation.



- TEFC Enclosure
- ¼ to 25 hp | 3600, 1800, and 1200 rpm
- 230/460 Volt, 60 Hz
- 190/380 Volt, 50 Hz
- IP55 protection
- IEC60034-1 & CE Certified



Aluminum Worm Gear Reducers

- NEMA and IEC input compatibility
- Box sizes 30 to 90
- 7.5:1 – 100:1 ratios
- One-piece aluminum alloy for lightweight strength

Gear Reducers

Our Shaft Mount, Worm, and Helical Bevel Gear Reducers directly replace existing equipment with quality and dependability, they are commonly used to transmit power to conveyors and material handling equipment.

Shaft Mount Gear Reducers

- Box sizes 2-12
- 9:1, 15:1, 25:1 ratios
- All cast iron housings
- 1 - 15/16" to 6 - 1/2" hollow output bores
- Metal reinforced, double lip spring loaded oil seals
- 2-3 year warranties
- Dimensionally equivalent to TXT Series



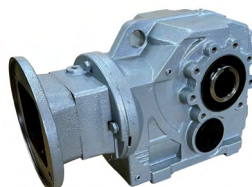
Worm Gear Reducers

- Right angle applications
- Box sizes 133 to 325
- 10:1 to 60:1 ratios
- All cast iron housings, carbon steel shafts and aluminum bronze gear
- Dimensionally equivalent to Boston 700 Series



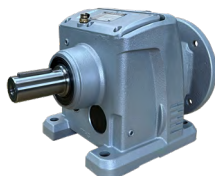
Helical-Bevel Gear Reducers

- Box sizes 37 to 97 | ¾ to 30 hp
- 2:1 to 120:1 ratios (plus custom)
- All cast iron housings
- Hollow output bores
- NEMA C-Face, no coupling required
- Dimensionally equivalent to most European brands



Helical-Inline Gear Reducers

- Box sizes 13 to 147 | ¼ to 100 hp
- 2:1 to 120:1 ratios (plus custom)
- NEMA C-Face, no coupling required
- Dimensionally equivalent to European R Series brand



General Purpose Fractional Motors

Totally Enclosed Fan Cooled (TEFC) 56C/56J Frame motors with IP43 protection. Rigid base, C-Face with removable base (CB), or C-Face round body (CRD) options.



- 115/230 Volt | ½ - 2 hp
- 230/460 Volt | 1 - 3 hp | Premium efficiency

NEMA
Premium

*NATE Series Only

General Purpose Open Drip Proof Motors

Ideal for use where cooler-running, non-enclosed motors are required.



- 1/2 to 200 hp | 3600, 1800, and 1200 rpm
- 230/460 Volt at 60Hz | 1.15 SF
- Enclosure: rolled steel frame (56 - 324/6T)
- Enclosure: cast iron frame (364/5T - 444/5T)
- Double drilled feet - mounting flexibility (143T - 445T)
- IP 23 Protection
- Lifting eyes on larger models | Rigid base*

*Exception: 56 Frame has C-Face with removable base

Chassis and Packaged, Motor Soft Starters and Variable Frequency Drives

We offer configured and fully customizable options for complete motor control. They are UL-compliant, assembled, tested, and ready for operation before shipment.

- NEMA 3R, 4, & 12 enclosure options
- Choice of WorldDrive VFD or WorldStart Soft Starters
- Control motors from 1 to 800 hp
- Multiple sizes, features and configuration options
- Standard options in-stock ready for immediate delivery



Generators

AC synchronous generators rated for standby or continuous duty to a wide range of equipment, such as pumping systems, and pivot systems.



- AC Synchronous
- Brushless 4-pole, self-ventilated alternators
- Double or single bearing
- 60 Hz at 1800 rpm or 50 Hz at 1500 rpm
- CSA approved