



WORLDWIDE
ELECTRIC CORPORATION

Buildings and Facilities

Reliable and Efficient Motors, Controls,
Gear Reducers, and Generators

Quality Products for General Purpose Applications

Many buildings, including hospitals, commercial, retail, condominiums, or municipal facilities, offer clean, dry environments suitable for general-purpose products. WorldWide Electric's product range matches the diversity of applications for operating buildings reliably and efficiently.

Worldwide Electric's distributors partner with building owners, facility managers, and engineers and technicians, such as HVAC techs, to ensure their equipment is operational and working as efficiently as possible — day in, day out.

Contact:

Call:

Email:

Open Drip Proof - Premium Efficiency Motors

Three-phase, lightweight compact IP23 design for general purpose and commercial applications. Ideal for use in HVAC and refrigeration equipment, air compressors, and general purpose installations where cooler-running, non-enclosed motors are required.

Long Life and Durability — The enclosure is either rolled steel or cast iron, depending on the motor's power. Both options offer the environmental protection and double vacuum pressure impregnation for winding insulation.

Drop-in Replacement — Our motor bases are guaranteed to fit your existing applications, with some models offering double-drilled feet, or F1 to F2 conversions for additional mounting flexibility.

Quick Specs

- 1/2 to 200 hp | 3600, 1800, and 1200 rpm | IP23
- 230/460 Volt at 60Hz | 1.15 SF
- Enclosure: rolled steel frame (56 - 324/6T)
- Enclosure: cast iron frame (364/5T - 444/5T)
- Lifting eyes assist with installation
- Double drilled feet to accommodate mounting flexibility (143T - 445T)
- Rigid base*



NEMA
Premium

*Exception: 56 Frame has C-Face with removable base

Also Available - ODP Close-Coupled Pump Motors

General Purpose Fractional Motors

Totally Enclosed Fan Cooled (TEFC) with IP43 protection and rigid base, C-Face with removable base (CB), or C-Face round body (CRD) options.

Single-Phase Motors

- 115/230 Volt
- Capacitor start/run (1.5-2 hp) for reduced amperage and high torque
- Capacitor start/induction run (1/3-1 hp)



NEMA Premium

*NATE Series Only

Three-Phase Motors

- 230/460 Volt
- Premium efficiency (1-3 hp)

Jet Pump Motors

Our Electric Jet Pump motors feature a high-torque and durable design to effectively power industrial, commercial, and residential pumping solutions such as water wells, and more.



NEMA Premium

*NATJE Series Only

- Single-phase or three-phase
- TEFC | 1/3 to 3 hp | 3600 rpm
- ODP | 1/3 to 5 hp | 3600 rpm
- 56j with threaded shaft, 56C with keyed shaft

Closed-couple Pump Motors

Totally Enclosed Fan Cooled (TEFC) or Open Drip Proof Close-coupled pump motors premium efficiency, making them ideal for pumping applications.

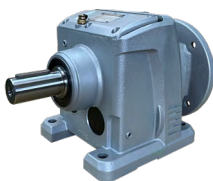


NEMA Premium

- 1 to 50 hp | 3600 and 1800 rpm
- TEFC | IP 55 protection | Cast iron frame
- ODP | IP 23 protection | Rolled steel frame
- TEFC | Stainless Steel | 1 - 20 hp | BISSC and BEAG Cert.
- JM or JP shaft options

Helical Inline Gear Reducers

Delivering a broad array of output torque and speed, the WINL Series are engineered to support a wide range of applications including fans, and pumps.



- Box sizes 37 to 147 | 1/4 to 100 hp
- 2:1 to 120:1 ratios
- NEMA C-Face, no coupling required
- Two-year warranty
- Dimensionally equivalent to European R Series brand

Motor Soft Starters, Chassis and Enclosed Packages

Protect against undue load and torque on your motors. Options for standard, heavy, non-combination, and positive displacement (PD) applications.



- WorldStart WSE or WSiQ
- 5 - 900 hp ratings
- 230, 460, and 575 Volt options
- 2-SCR and 3-SCR Products
- Run-rated internal bypass
- Adjustable current limit 250% to 450%
- Adjustable Motor Trip Class: 2 to 20 seconds
- IP20 19 to 100 A; IP00 140 to 200 A
- True 3-Phase Starter, 350% FLA for 30 seconds
- NEMA 4 enclosures with WorldStart WSE or WSiQ

Variable Frequency Drives, Chassis and Enclosed Packages

Total control of your motor applications, from general purpose to severe duty.



- WorldDrive FC, G2, 4X, or N700E models available
- 1/2 - 800 hp ratings
- 230 and 460 Volt options
- Single-phase and three-phase
- Volts to frequency, slip compensation, and sensorless vector control modes
- Output Frequency 0.01 - 400 Hz
- Carrier Frequency 1 - 15k Hz
- NEMA 3R, 4, and 12 enclosure options

Ancillary Control Devices

Support a wide range of applications from basic to complex control. Brands include Siemens, Hubbell, and WorldWide Electric.



- Safety and Disconnect Switches
- Pilot Devices & Push Buttons
- Selector Switches & Indicator Lights
- Contactors & Auxiliary Contact Blocks
- Overload Relays & Alternator relays
- Drum Controllers
- Pressure Switches