

DATA SHEET

Premium Efficiency Motor: **ODP7.5-12-200-254T**,

60 Hz

WorldWide Electric Corporation

1 (800) 808-2131

Worldwideelectric.net



Document Generated: 12-Dec-2023
Document ID:

Customer:

| MOTOR INFORMATION | |
|-------------------------|-----------------------------|
| HP | 7.5 |
| RPM | 1200 |
| Phase | 3 |
| Frequency | 60 |
| Voltage | 200 |
| Frame Size | 254/6T |
| Enclosure | ODP |
| Degree of Protection | IP23 |
| Service Factor | 1.15 |
| Poles | 6 |
| Full Load Speed | 1168 |
| Insulation Class | F |
| Temp Rise | 80°C |
| NEMA Code Letter | H |
| Duty Cycle | S1 / Continuous |
| Slip | 2.66% |
| NEMA Design | B |
| Moment of Inertia | 1.926 lb.ft.^2 |
| Locked Rotor Time (Hot) | 12 seconds |
| Sound Pressure Level | 59 dB(A) |
| Number of Starts | 2 Cold / 1 Hot |
| Max Ambient Temperature | 40°C |
| Max Elevation | 1000 m.a.s.l (3300 f.a.s.l) |
| Mounting | F1 |
| Rotation | Bi-Directional |
| Area of Classification | Safe Area |
| Inverter Rating | 10:1 CT / 20:1 VT |
| Standard | NEMA MG 1 |
| Approvals | UL, CE |

| EFFICIENCY/POWER FACTOR | | |
|-------------------------|--------|-------|
| LOAD | EFF | P. F. |
| 100% | 90.2 % | 0.78 |
| 75% | 91.5 % | 0.72 |
| 50% | 91.0 % | 0.6 |

| TORQUE | | |
|-----------|-------|-------|
| FULL LOAD | LRT | BDT |
| 33 lb.ft. | 335 % | 377 % |

| AMPERAGE INFORMATION | |
|----------------------|---------|
| | 200V |
| Full Load Amps | 22.54 |
| Locked Rotor Amps | 153.18A |
| No Load Current | 10.81A |

| BEARING INFORMATION | |
|-------------------------|------------------|
| DE Bearing | 6309Z |
| ODE Bearing | 6307Z |
| Grease Type | Mobil Polyrex EM |
| DE Regreasing Interval | 2400 Hours |
| ODE Regreasing Interval | 3600 Hours |
| Grease Quantity | 13g/8g |

| ADDITIONAL DATA | |
|--------------------|--------------|
| F2 Suitable | Yes |
| Shaft Material | AISI 1045 |
| Connection Diagram | 6 Lead Delta |
| Approximate Weight | 185 lbs. |

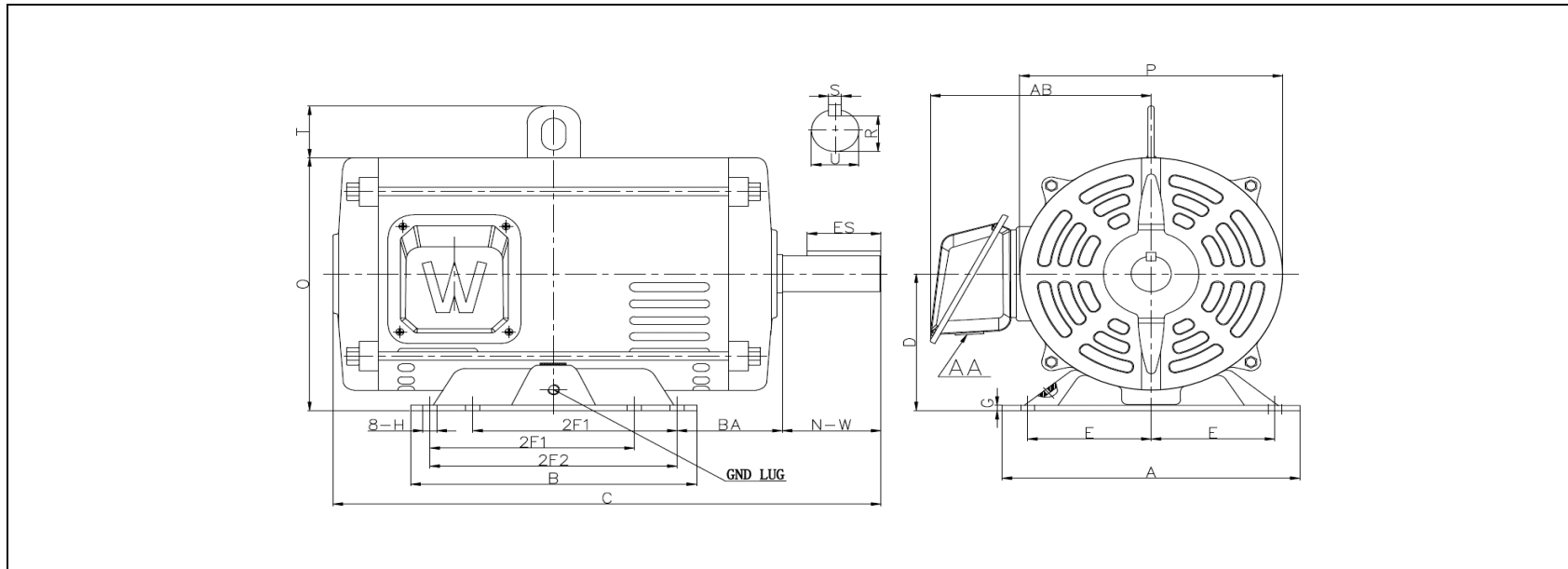
MOTOR DRAWING

Premium Efficiency Motor: **ODP7.5-12-200-254T**

WorldWide Electric Corporation

1 (800) 808-2131

Worldwideelectric.net



DIMENSION - INCHES

| MOUNTING | | | | | A | B | C | D | G | P | O | T | AB |
|----------|------|-----|------|------|-------|-------|------|------|-------|-------|------|------|-----|
| E | 2F1 | 2F2 | H | BA | | | | | | | | | |
| 5 | 8.25 | 10 | 0.53 | 4.25 | 12.05 | 11.57 | 22.3 | 6.25 | 0.236 | 10.63 | 11.6 | 2.48 | 9.7 |

| SHAFT & KEY | | | | |
|-------------|------|-------|-----|-------|
| S | ES | R | N-W | U |
| 0.375 | 2.91 | 1.416 | 4 | 1.625 |

| T-BOX | GND LUG |
|-------|---------|
| AA | |
| 1.38 | M6*P1.0 |

PERFORMANCE CURVES

Premium Efficiency Motor:

ODP7.5-12-200-254T

WorldWide Electric Corporation

1 (800) 808-2131

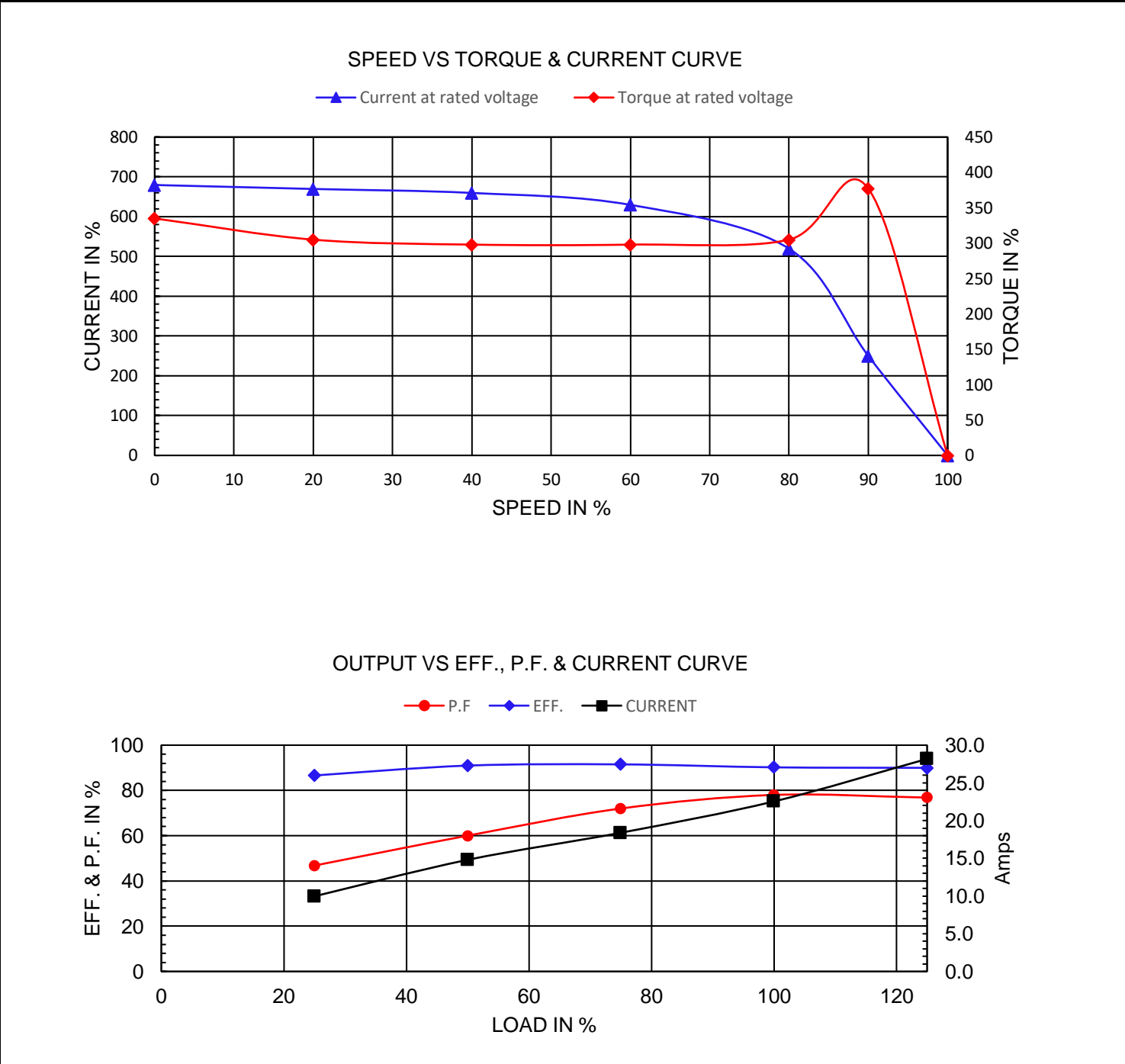
Worldwideelectric.net



Document Generated: 12-Dec-2023
Document ID:

Customer:

| | | | | | |
|-----------------------|--------------------------|------------|------|--------------|-------|
| Motor Type | PEWWE | | | | |
| Output Rating (HP) | 7.5 | FL Speed | 1168 | | |
| Full Load Torque | 33 lb.ft | LRT (%FLT) | 335 | 200 volt FLA | 22.54 |
| Rotor Wk ² | 1.926 lb-ft ² | BDT (%FLT) | 377 | | |



NAMEPLATE / WIRING

WorldWide Electric Corporation

1 (800) 808-2131

Worldwideelectric.net







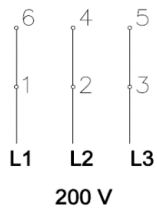
Premium Efficiency Motor: **ODP7.5-12-200-254T**

Document Generated: 12-Dec-2023
Document ID:

Customer:

SAMPLE NAMEPLATE DATA

| | | | | | | | | | | | |
|---|---------|--|---------|-----------|--------------|--|--|---|--|---|--|
|  | | OPEN DRIP PROOF 3 PHASE MOTOR | | | |  | |  | |  | |
| Model : | | Encl : | | SN : | | | | | | | |
| HP : | Poles : | FR : | Ins : F | IP 23 | Max Amb 40°C | Duty:Cont | | | | | |
| Hz : | CODE: | | | Design : | | | | | | | |
| Volts : | P.F. : | | | DE BRG : | | | | | | | |
| Amps : | Eff : | | | ODE BRG : | | | | | | | |
| RPM : | S.F. : | | | WT : | | | | | | | |
| | | | | | | | | | | Date : | |
| WorldWide Electric Corporation | | | | | | | | | | | |



| | | | | | | | |
|---------------|--------------------|---------------|-------|-----------------|----------|-------------|---|
| Model | ODP7.5-12-200-254T | Encl | ODP | | | | |
| HP: | 7.5 | Poles: | 6 | FR: | 254/6T | Ins: | F |
| Hz: | 60 | Code: | H | Design | B | | |
| Volts: | 200 | P.F.: | 0.78 | DE BRG: | 6309Z | | |
| Amps | 22.54 | Eff: | 90.2% | ODE BRG: | 6307Z | | |
| RPM | 1168 | S.F. : | 1.15 | WT: | 185 lbs. | | |