

DATA SHEET

Premium Efficiency Motor: **ODP2-12-200-184T,**

60 Hz

WorldWide Electric Corporation

1 (800) 808-2131

Worldwideelectric.net



Document Generated: 12-Dec-2023
Document ID:

Customer:

MOTOR INFORMATION	
HP	2
RPM	1200
Phase	3
Frequency	60
Voltage	200
Frame Size	182/4T
Enclosure	ODP
Degree of Protection	IP23
Service Factor	1.15
Poles	6
Full Load Speed	1169
Insulation Class	F
Temp Rise	80°C
NEMA Code Letter	K
Duty Cycle	S1 / Continuous
Slip	2.62%
NEMA Design	B
Moment of Inertia	0.506 lb.ft.^2
Locked Rotor Time (Hot)	12 seconds
Sound Pressure Level	60 dB(A)
Number of Starts	2 Cold / 1 Hot
Max Ambient Temperature	40°C
Max Elevation	1000 m.a.s.l (3300 f.a.s.l)
Mounting	F1
Rotation	Bi-Directional
Area of Classification	Safe Area
Inverter Rating	10:1 CT / 20:1 VT
Standard	NEMA MG 1
Approvals	UL, CE

EFFICIENCY/POWER FACTOR		
LOAD	EFF	P. F.
100%	87.5 %	0.61
75%	87.2 %	0.53
50%	84.8 %	0.41

TORQUE		
FULL LOAD	LRT	BDT
8.98 lb.ft.	319 %	326 %

AMPERAGE INFORMATION	
	200V
Full Load Amps	8.28
Locked Rotor Amps	48.53A
No Load Current	5.52A

BEARING INFORMATION	
DE Bearing	6306ZZ
ODE Bearing	6305ZZ
Grease Type	NSK SN7
DE Regreasing Interval	-- Hours
ODE Regreasing Interval	-- Hours
Grease Quantity	--

ADDITIONAL DATA	
F2 Suitable	No
Shaft Material	AISI 1045
Connection Diagram	6 Lead Delta
Approximate Weight	76 lbs.

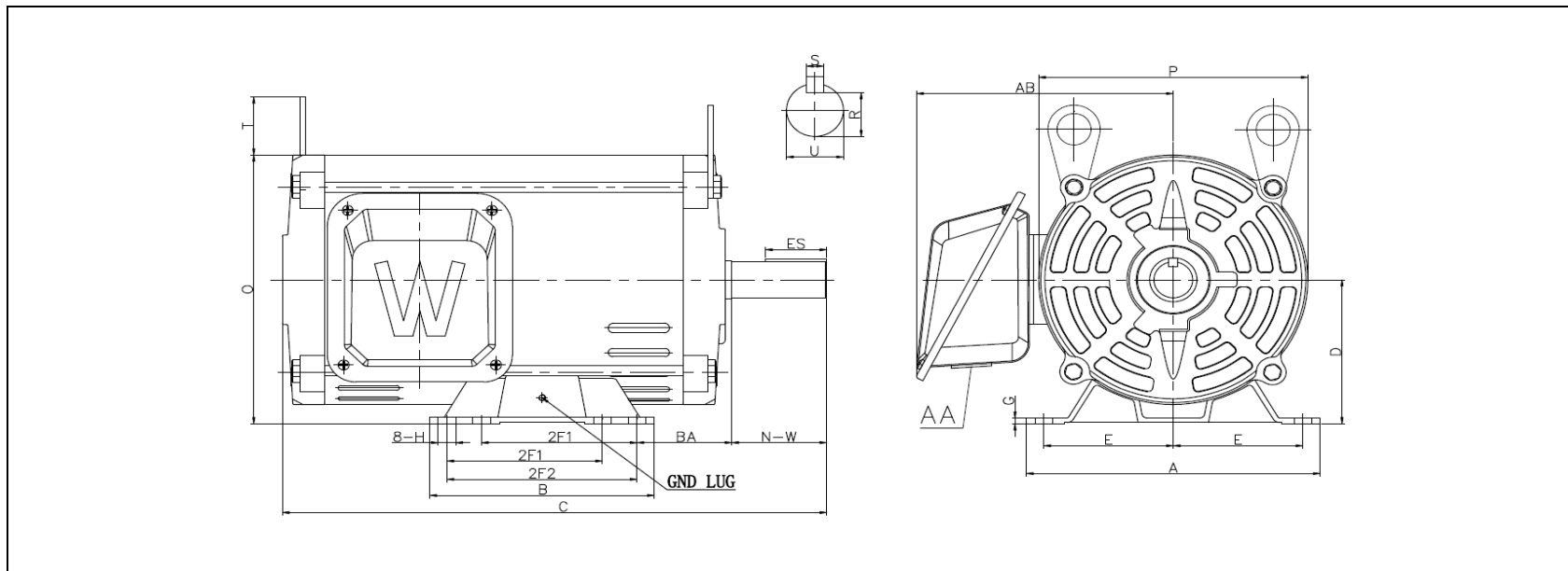
MOTOR DRAWING

Premium Efficiency Motor: **ODP2-12-200-184T**

WorldWide Electric Corporation

1 (800) 808-2131

Worldwideelectric.net



DIMENSION - INCHES

MOUNTING					A	B	C	D	G	P	O	T	AB
E	2F1	2F2	H	BA									
3.75	4.5	5.5	0.41	2.75	8.5	6.495	16.4	4.5	0.41	7.72	8.36	1.6	7.55

SHAFT & KEY				
S	ES	R	N-W	U
0.25	1.78	0.986	2.75	1.125

T-BOX	GND LUG
AA	
1.09	M5*P0.8

PERFORMANCE CURVES

Premium Efficiency Motor:

ODP2-12-200-184T

WorldWide Electric Corporation

1 (800) 808-2131

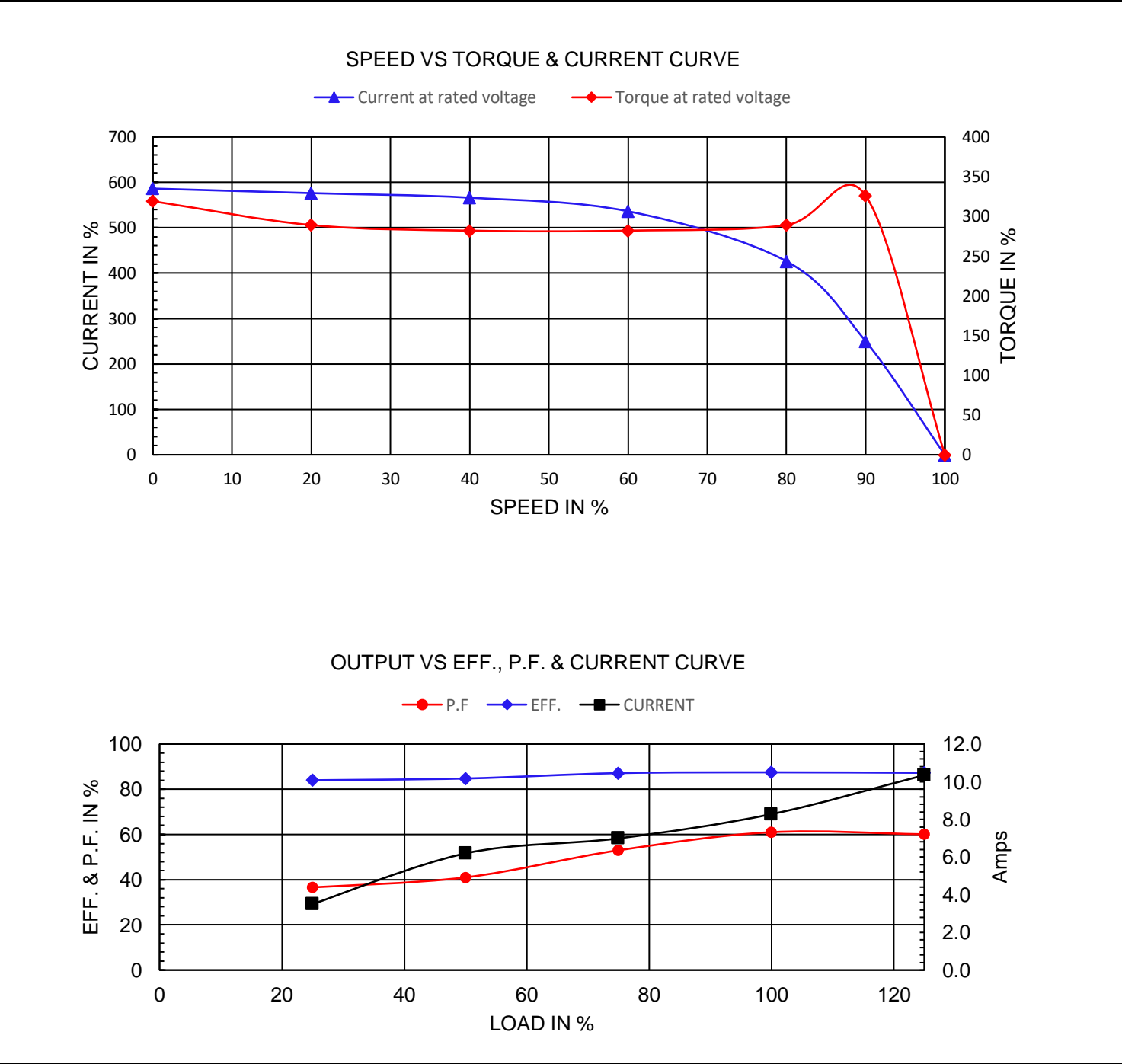
Worldwideelectric.net



Document Generated: 12-Dec-2023
Document ID:

Customer:

Motor Type	PEWWE		FL Speed	1169		
Output Rating (HP)	2		LRT (%FLT)	319	200 volt FLA	8.28
Full Load Torque	8.98	lb.ft	BDT (%FLT)	326		
Rotor Wk ²	0.506	lb-ft ²				



NAMEPLATE / WIRING

WorldWide Electric Corporation

1 (800) 808-2131

Worldwideelectric.net







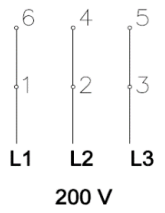
Premium Efficiency Motor: **ODP2-12-200-184T**

Document Generated: 12-Dec-2023
Document ID:

Customer:

SAMPLE NAMEPLATE DATA

		OPEN DRIP PROOF 3 PHASE MOTOR									
Model :		Encl :		SN :							
HP :	Poles :	FR :	Ins : F	IP 23	Max Amb 40°C	Duty:Cont					
Hz :	CODE:			Design :							
Volts :	P.F. :			DE BRG :							
Amps :	Eff :			ODE BRG :							
RPM :	S.F. :			WT :							
										Date :	
WorldWide Electric Corporation											



Model	ODP2-12-200-184T	Encl	ODP		
HP:	2	Poles:	6	FR:	182/4T
Hz:	60	Code:	K	Design	B
Volts:	200	P.F.:	0.61	DE BRG:	6306ZZ
Amps	8.28	Eff:	87.5%	ODE BRG:	6305ZZ
RPM	1169	S.F. :	1.15	WT:	76 lbs.
				Ins:	F