

DATA SHEET

Premium Efficiency Motor: **ODP150-18-200-444TS,**

60 Hz

WorldWide Electric Corporation

1 (800) 808-2131

Worldwideelectric.net



Document Generated: 12-Dec-2023
Document ID:

Customer:

MOTOR INFORMATION	
HP	150
RPM	1800
Phase	3
Frequency	60
Voltage	200
Frame Size	444/5TS
Enclosure	ODP
Degree of Protection	IP23
Service Factor	1.15
Poles	4
Full Load Speed	1783
Insulation Class	F
Temp Rise	80°C
NEMA Code Letter	G
Duty Cycle	S1 / Continuous
Slip	0.96%
NEMA Design	B
Moment of Inertia	39.487 lb.ft.^2
Locked Rotor Time (Hot)	12 seconds
Sound Pressure Level	90 dB(A)
Number of Starts	2 Cold / 1 Hot
Max Ambient Temperature	40°C
Max Elevation	1000 m.a.s.l (3300 f.a.s.l)
Mounting	F1
Rotation	Bi-Directional
Area of Classification	Safe Area
Inverter Rating	10:1 CT / 20:1 VT
Standard	NEMA MG 1
Approvals	UL, CE

EFFICIENCY/POWER FACTOR		
LOAD	EFF	P. F.
100%	95.8 %	0.87
75%	96.1 %	0.84
50%	95.8 %	0.74

TORQUE		
FULL LOAD	LRT	BDT
434.8 lb.ft.	194 %	316 %

AMPERAGE INFORMATION	
	200V
Full Load Amps	380.42
Locked Rotor Amps	2697.9A
No Load Current	118.91A

BEARING INFORMATION	
DE Bearing	6320
ODE Bearing	6316
Grease Type	Mobil Polyrex EM
DE Regreasing Interval	2400 Hours
ODE Regreasing Interval	3600 Hours
Grease Quantity	51g/33g

ADDITIONAL DATA	
F2 Suitable	Yes
Shaft Material	AISI 1045
Connection Diagram	6 Lead Delta
Approximate Weight	lbs.

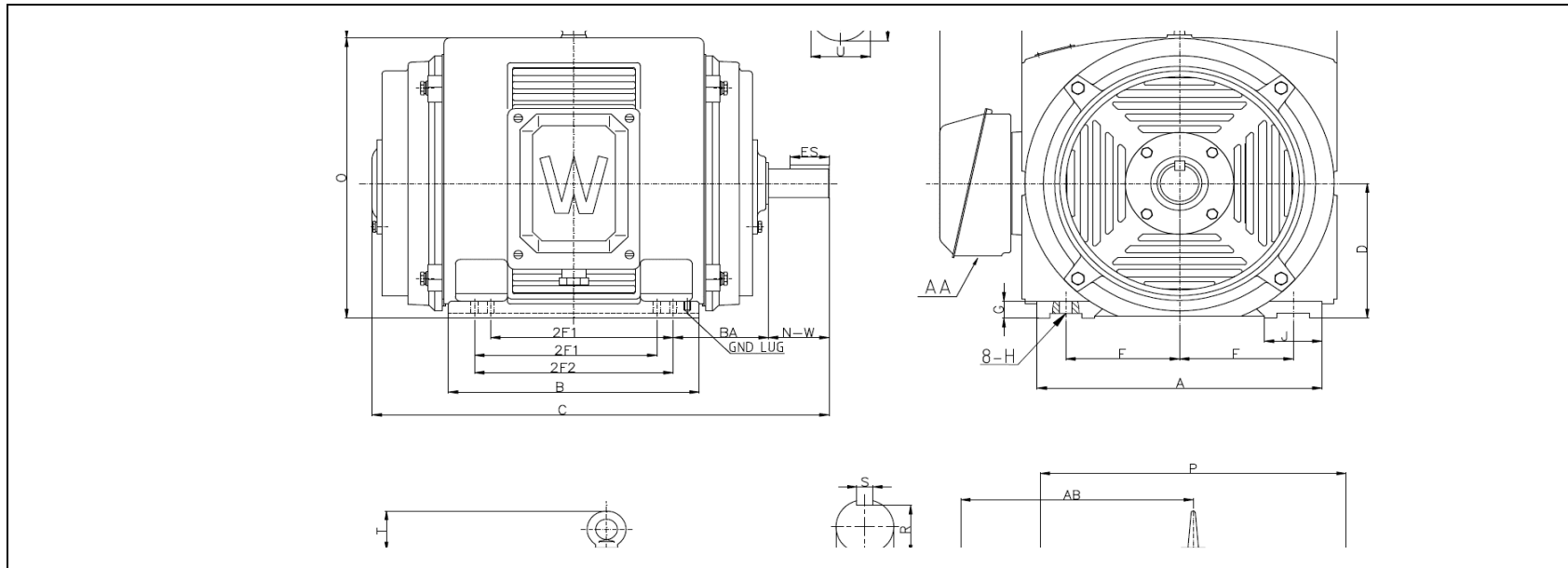
MOTOR DRAWING

Premium Efficiency Motor: **ODP150-18-200-444TS**

WorldWide Electric Corporation

1 (800) 808-2131

Worldwideelectric.net



DIMENSION - INCHES

MOUNTING					A	B	C	D	G	P	O	T	AB
E	2F1	2F2	H	BA									
9	14.5	16.5	0.81	7.5	22.3	22.9	35.7	11	1.37	23.42	22.7	3	20.6

SHAFT & KEY				
S	ES	R	N-W	U
0.625	3.03	2.021	4.75	2.375

T-BOX	GND LUG
AA	
3	M12*P1.75

PERFORMANCE CURVES

WorldWide Electric Corporation

1 (800) 808-2131

Worldwideelectric.net

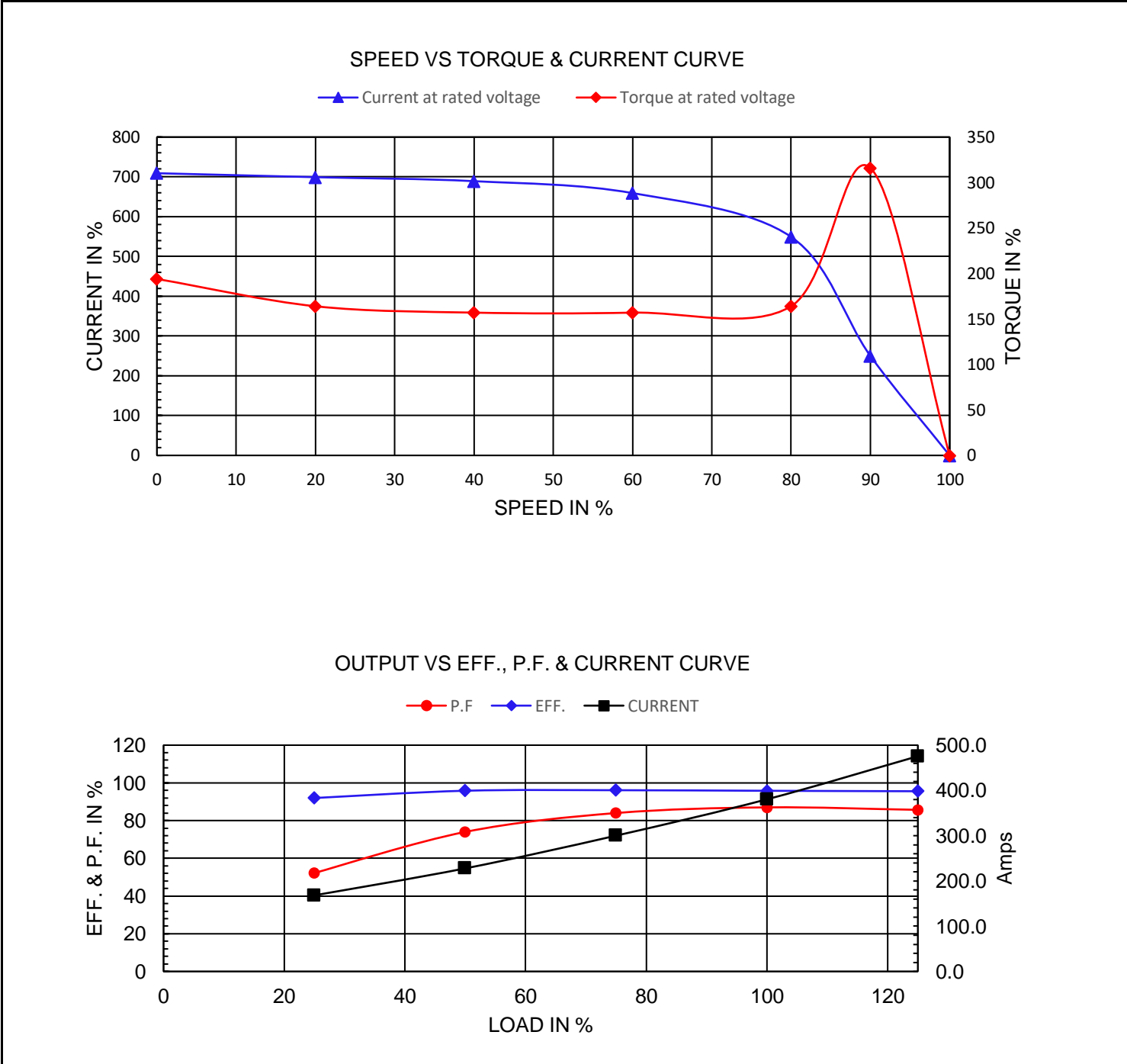


Premium Efficiency Motor:

ODP150-18-200-444TS

Document Generated: 12-Dec-2023	Customer:
Document ID:	

Motor Type	PEWWE				
Output Rating (HP)	150	FL Speed	1783		
Full Load Torque	434.8 lb.ft	LRT (%FLT)	194	200 volt FLA	380.42
Rotor Wk ²	39.487 lb-ft ²	BDT (%FLT)	316		



NAMEPLATE / WIRING

WorldWide Electric Corporation

1 (800) 808-2131

Worldwideelectric.net








Premium Efficiency Motor: **ODP150-18-200-444TS**

Document Generated: 12-Dec-2023
Document ID:

Customer:

SAMPLE NAMEPLATE DATA

		OPEN DRIP PROOF 3 PHASE MOTOR							
CC306B		Model :		Encl :		SN :			
HP :	Poles :	FR:	Ins : F	IP23	Max Amb 40°C	Duty:Cont			
Hz :			CODE :		Design :				
Volts :			P.F. :		DE BRG :				
Amps :			Eff :		ODE BRG :				
RPM :			S.F. :		WT : LBS				
Date :			WorldWide Electric Corporation						

Model	ODP150-18-200-444TS	Encl	ODP		
HP:	150	Poles:	4	FR:	444/5TS
Hz:	60	Code:	G	Design	B
Volts:	200	P.F.:	0.87	DE BRG:	6320
Amps	380.42	Eff:	95.8%	ODE BRG:	6316
RPM	1783	S.F. :	1.15	WT:	lbs.
				Ins:	F