



**WORLDWIDE**  
ELECTRIC CORPORATION



**Responsive**  
Service & Technical Support



**Quality Products**  
Competitive Pricing



**In Stock Availability**  
Warehouses Nationwide



**Fast Shipping**  
Same-Day Available

# Full Product Line Card

**Proven Products to Provide Reliable Uptime**

No matter what industry – agriculture, construction, aggregate, material handling, oil and gas, irrigation, wastewater, food processing, or manufacturing – we know every moment of downtime reduces productivity and impacts the bottom line. That’s why we still live by our founding customer-centric philosophy -providing quality products, a large selection of in-stock inventory, and fast shipping, all backed by exceptional customer support.

3rd Quarter 2023

## Focus on Open Drip Proof - ODP Series -

### Three-phase, lightweight compact IP23 design for general purpose and commercial applications

Ideal for use in HVAC and refrigeration equipment, air compressors, and general purpose installations where cooler-running, non-enclosed motors are required.

**Premium Efficiency** — They are available from 1/2 to 200 horsepower, meet NEMA specifications, and provide inverter duty and service factors suitable for ODP motor applications.

**Long Life and Durability** — The enclosure is either rolled steel or cast iron, depending on the motor’s power. Both options offer the environmental protection and double vacuum pressure impregnation for winding insulation.

**Drop-in Replacement** — Our motor bases are guaranteed to fit your existing applications, with some models offering double-drilled feet, or F1 to F2 conversions for additional mounting flexibility.

**NEMA Premium**



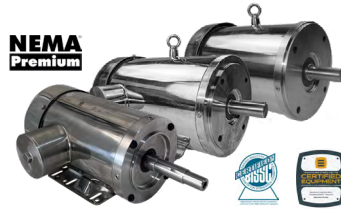
- 1/2 to 200 hp | 3600, 1800, and 1200 rpm | IP23
- 230/460 Volt at 60Hz | 1.15 SF
- Enclosure: rolled steel frame (56 - 324/6T)
- Enclosure: cast iron frame (364/5T - 444/5T)
- Double drilled feet to accommodate mounting flexibility (143T - 445T)
- Lifting eyes on larger models assist with installation
- Rigid base\*

**Also Available - ODP Close-Coupled Pump Motors - See Inside**

\*Exception: 56 Frame has C-Face with removable base

## Washdown Motors

Our Fractional and Premium Efficient Stainless Steel motors offer complete protection from water, dust, and oil. They are ideal for conveyors, pumps, and material handling applications in the food and beverage, pharmaceutical, and poultry industries.

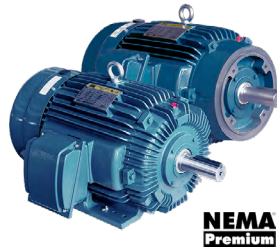


- TEFC or TENV
- BISSC and BEAG Certified
- 1/3 to 2 hp | 3600 and 1800 rpm | 56C Frame size | IP56
- 1/3 to 20 hp | 3600 and 1800 rpm | IP69k
- 1/2 to 5 hp | 1200 rpm | IP69k
- Three-phase, 230/460 Volt
- C-Face with feet (welded on) or round body (footless)
- Premium efficient models offer a three-year warranty

**Now Available** Close-Coupled Pump Motors (JM Series)

## Marine Duty Motors

IEEE 45, inverter duty motors are rugged enough for wet environments and taxing conditions. They offer a three-year warranty and an impressive list of features.



- Totally Enclosed Fan Cooled (TEFC)
- 1 to 450 hp | 3600, 1800, 1200, and 900 rpm
- Inverter duty, 10:1 CT / 20:1 VT (1.0 SF)
- Design B and NEMA premium efficiency
- Class 1 Div. 2 Groups A,B,C,D (NEC)
- UR, CE, IEEE 45, CC306B



## Explosion Proof Motors

Totally Enclosed Fan Cooled Explosion Proof (TEXP) enclosure, designed for industrial applications with the presence of highly combustible, pervasive materials. Fully tested and certified for explosion proof classification in Class 1 Division 1 Groups C & D and Class 2 Division 1 Groups F & G.



- Totally Enclosed Fan Cooled Explosion Proof (TEXP)
- 1 to 300 hp | 3600, 1800, and 1200 rpm
- 230/460 Volt (1 to 100 hp), 460 Volt (125 to 300 hp)
- IP55 protection
- Rigid base (T/TS) or C-Face with feet (TC/TSC)
- Premium efficiency (1 to 200 hp)
- High efficiency (250 to 300 hp)
- Inverter duty, 5:1 CT / 10:1 VT (1 to 200 hp)

## Farm Duty Motors

WorldWide Electric's Totally Enclosed Fan Cooled (TEFC) Farm Duty motors support general-purpose agricultural applications, such as moving materials on conveyors, lifts, screws, augers, and elevators, or for driving fans and centrifuges when ventilating, drying, or aerating storage bins and buildings.



### Integral

- 2 to 10 hp | 1800 rpm
- 230 Volt, 60 Hz
- IP55 protection

### Fractional

- 1/3 to 2 hp | 1800 rpm
- 115/230 Volt, 60 Hz
- IP54 protection

## IEC Metric Motors

Designed for the needs of our customers utilizing equipment manufactured overseas. Our IEC motors operate at IE3 Efficiency at 50 Hz and are NEMA Premium Efficient at 60 Hz operation.



- Totally Enclosed Fan Cooled (TEFC) Enclosure
- 1/4 to 25 hp | 3600, 1800, and 1200 rpm
- 230/460 Volt, 60 Hz
- 190/380 Volt, 50 Hz
- IP55 protection
- IEC60034-1 & CE Certified

## DC Motors

Permanent Magnet DC (PMDC) motors are ideal for applications that require simple variable speed control and high starting torque.



- 90, 180, 12 and 24 Volt
- TENV | 1/4 to 1/2 hp | 1800 rpm
- TEFC | 3/4 to 2 hp | 1800 rpm
- C-Face with removable base
- 20:1 Speed range at constant torque
- IP54 protection

## General Purpose Fractional Motors

Totally Enclosed Fan Cooled (TEFC) with IP43 protection and rigid base, C-Face with removable base (CB), or C-Face round body (CRD) options.



- 115/230 Volt | 1/3 - 2 hp
- 230/460 Volt | 1 - 3 hp | Premium efficiency

\*NATE Series Only



## Oil Well Pump Motors

Designed for maximum run time and harsh environments of oil production. Features include high starting / breakdown torque performance with high slip NEMA Design D and oversized bearings for heavy duty belt drive applications.



- Totally Enclosed Fan Cooled (TEFC)
- 3 to 150 hp | 1200 and 900 rpm
- 230, 460, and 796 Volt
- IP55 protection
- Rigid base

## Vertical Hollow Shaft Motors

For use in standard and high-thrust turbine pump applications, such as pivot systems, deep wells, and groundwater pumping applications. VHS motors offer premium efficiency, corrosion-resistant epoxy paint, epoxy-coated rotor and windings, and a felt end bell seal that protects from pump seal failure.



NEMA  
Premium

- 10 to 500 hp | 1800 rpm
- IP23 weather protected enclosure
- Standard coupling size included
- Double thrust bearing design (100-500 hp) for deeper well applications
- Two-year warranty

## Closed-couple Pump Motors

Totally Enclosed Fan Cooled (TEFC) or Open Drip Proof Close-coupled pump motors are designed to meet or exceed EISA 2007 requirements for premium efficiency, making them ideal for industrial pumping applications, such as centrifugal pumps requiring JM or JP shafts.



NEMA  
Premium

- 1 to 50 hp | 3600 and 1800 rpm
- TEFC | IP 55 protection | Cast iron frame
- ODP | IP 23 protection | Rolled steel frame
- TEFC | Stainless Steel | 1 - 20 hp | BISSC and BEAG Cert.

## Jet Pump Motors

Our Electric Jet Pump motors feature a high-torque and durable design to effectively power industrial, commercial, and residential pumping solutions such as water wells, pools, and more.



NEMA  
Premium

- Single-phase or three-phase
- TEFC |  $\frac{1}{3}$  to 3 hp | 3600 rpm
- ODP |  $\frac{1}{3}$  to 5 hp | 3600 rpm
- 56J with threaded shaft, 56C with keyed shaft

\*NATJE Series Only

## New Product Line Generators

AC synchronous generators rated for standby or continuous duty to a wide range of equipment, such as pumping systems, pivot systems, and light towers.



Built to IEC 600341-1 & -2 requirements, BS4990 & 5000, NEMA MG1 2006, CSA, and CE

### Single & Double Bearing

- 4-2100 kW for industrial applications
- Self-ventilated for reliability
- Single-Phase or Three-phase
- Brushless 4 pole at 1800 RPM
- Brushless 2 pole at 3600 RPM

### Pancake-style

- Ideal for lighttower applications
- 2-pole units, 60 Hz, 3600 RPM or 50 Hz, 3000 rpm
- 4-pole units, 60 HZ, 1800 RPM or 50 Hz, 1500 rpm
- Dual and single frequency model option

## Premium Efficient, Severe Duty Motors

Reliable, high performance motors well-equipped to power anything from pumps, fans, compressors, blowers, and hydraulic power units.



NEMA  
Premium

- 1 to 500 hp | 3600, 1800, 1200, and 900 rpm
- Frame size 143T to 586/7, rigid base or C-Face & feet (TC)
- Inverter duty, 10:1 CT / 20:1 VT (1.0 SF)
- IP55 protection | CSA certified | CC006A

## Severe Duty for Crusher Applications

Our Rock Crusher Motors provide high starting and breakdown torques for high-impact, heavy-duty applications, such as aggregate conveyors and lifts.

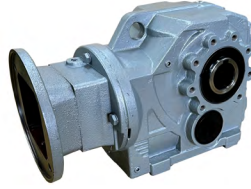


NEMA  
Premium

- 200 to 600 hp | 1800 and 1200 rpm
- IP55 protection and premium efficiency
- 4140 high tensile strength steel shaft
- FC200 density cast iron frame

## Helical Bevel Gear Reducers

The KHN and KAN Series deliver a broad range of power and output torque to support a wide array of applications. A standard NEMA quill input design simplifies the task of retrofitting as it is universally compatible with any C-Face motor. The KHN Series gear reducer features a foot-mounted design while the KAN Series reducer is available with a torque arm or flange mounted design.



- Box sizes 37 to 97 | ¾ to 30 hp
- 2:1 to 120:1 ratios
- All cast iron housings and hollow output bores
- NEMA C-Face, no coupling required
- Two-year warranty
- Drop-in compatibility to most major European brands

## Shaft Mount Reducers

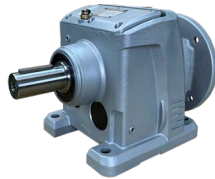
Our Shaft Mount Gear Reducers offer quality and dependability and can directly replace existing equipment. They are commonly used to transmit power to conveyors and material handling equipment.



- The *Original*, *Eliminator* and *Ultimate* Reducers
- Box sizes 2-12
- 9:1, 15:1, 25:1 ratios
- Industrial grade all cast iron housings
- Tapered bushing type (bushing not included)
- 1-15/16" to 5-7/16" hollow output bores
- Premium quality ball and tapered bearings
- Metal reinforced double lip, spring loaded oil seals
- Two-year warranty
- The *Original* - Dimensionally equivalent to TXT Series

## Helical Inline Gear Reducers

Delivering a broad array of output torque and speed, the WINL Series are engineered to support a wide range of applications including fans, pumps, conveyors, material handling equipment, packaging machines, and textile machinery.



- Box sizes 37 to 147 | ¼ to 100 hp
- 2:1 to 120:1 ratios
- NEMA C-Face, no coupling required
- Two-year warranty
- Dimensionally equivalent to European R Series brand

## Worm Gear Reducers

Our Worm Gear Reducers replace existing equipment with quality and dependability. Worm gear reducers are among the most compact and least expensive options among gear reducers, used to reduce input rotational speed and increase output torque in right angle configurations.



### Heavy Duty Cast Iron (HdR)

- Box sizes 133 to 325
- 5:1 to 60:1 ratios
- Dimensions and performance equivalent to Boston 700 Series

### Lightweight Aluminum (CALM)

- Box sizes 30 to 90
- 7.5:1 to 90:1 ratios
- NEMA & IEC motor input flanges
- Multiple mounting holes for all angle mounts
- Performance matches other major brands



Now with  
IEC Flanges

### Corrosion Resistant Stainless Steel (SSHdR)

- Box sizes 175 to 325
- 5:1 to 100:1 ratios
- BISSC Certified | IP69K
- Stainless steel bushing kits can be used to adjust the output bore size
- Performance matches other major brands



## Parallel Shaft Helical Gear Reducers

The FHN Series offer universal compatibility with NEMA C-face motors, a hollow bore output, and a broad range of power and output torques support many industrial process applications.



- Box sizes: 37-97 | ¼ hp to 25 hp
- 4:1 to 180:1 ratios
- All cast iron housings
- 20rMo alloy steel gears reduce stress, corrosion and noise
- Powerlock option available
- Two-year warranty
- Drop-in compatibility with most major European-produced reducer brands

## Gear Reducer Accessories

We offer a complete range of accessories including single and double output shafts, output covers, bushing kits, etc.

We offer configured and fully customizable options for complete motor control. A broad range of available sizes, features, and configuration options are available across our product lines. Standard options are in-stock and ready for immediate delivery. Heavy-duty enclosures protect your investment against the most demanding outdoor environments. Packaged systems are UL-compliant, assembled, tested, and ready for operation before shipment.

## Variable Frequency Drives, Chassis and Enclosed Packages

Total control of your motor applications, from general purpose to severe duty.

- WorldDrive FC, G2, 4X, or N700E models available
- 0.5-800 hp ratings
- 230 and 460 Volt options
- Single-phase and three-phase
- Volts to frequency, slip compensation, and sensorless vector control modes
- Output Frequency 0.01-400 Hz
- Carrier Frequency 1-15k Hz
- NEMA 3R, 4, and 12 enclosure options



## Motor Soft Starters, Chassis and Enclosed Packages

Protect against undue load and torque on your motors. Options for standard, heavy, non-combination, and positive displacement (PD) applications.

- WorldStart WSE or WSiQ
- 5-900 hp ratings
- 230, 460, and 575 Volt options
- 2-SCR and 3-SCR Products
- Run-rated internal bypass
- Adjustable current limit 250% to 450%
- Adjustable Motor Trip Class: 2 to 20 seconds
- IP20 19 to 100 A; IP00 140 to 200 A
- True 3-Phase Starter; 350% FLA for 30 seconds
- NEMA 4 enclosures with WorldStart WSE or WSiQ



## Across-the-Line Starters

Simple control devices for a wide range of applications. WorldWide Electric and Siemens Brands.

- General Purpose Motor Starters
- Siemens Class 14 NEMA Rated Motor Starters with ESP200 Solid State Overload
- Siemens 3RE48 NEMA Rated Pump Controllers with ESP200 Solid State Overload
- Class 18 MCP Type with Solid State Overload
- Solid State Overload Relays and Current Transformers
- Motor starter kits, accessories, parts, incl. Siemens Coils for NEMA Starters



## Remote Operating Module

Reduce time spent in the field checking up on your operations. View system statuses in real-time, view automatically-generated reports, and get notified of critical issues via email/text 24/7.

- Real-time monitoring with alerts
- Unlimited Technical Support
- 4G Cellular Connectivity
- Configurable Inputs and Outputs
- Three-year monitoring incl.
- Renewable plans available.



**New for 2023**

## Positive Displacement Pump Enclosed Packages and Panels

Motor Soft Starter and Variable Frequency Drive Packages for demanding start-up, control and protection needed for PD applications, incl. oil and gas, salt water disposal, irrigation, jet pump, etc.

- 3 - 800 hp | Single-phase and three-phase
- Start-rated bypass contactor
- CT and VT ratings
- Multiple control options, incl. "Murphy Switches"
- Full skid control and programming options
- NEMA 3R AND NEMA 4 enclosures



## Ancillary Control Devices

Support a wide range of applications from basic to complex control. Brands include Siemens, Hubbell, and WorldWide Electric.

- Safety and Disconnect Switches
- Pilot Devices & Push Buttons
- Selector Switches & Indicator Lights
- Contactors & Auxiliary Contact Blocks
- Overload Relays & Alternator relays
- Drum Controllers
- Pressure Switches

