



WORLDWIDE MOTOR CONTROLS  
Soft Starters  
General Purpose Solid State Soft Starters



## MODEL: WWEPICSSRV12-500

### General Product Specifications

- NEMA 4 Enclosure
- Service entrance rated
- Advanced Motor Protection
- Full panel surge protection
- Integral full rated bypass contactor with X-Line mode
- Front panel indicators and keypad
- Start/stop, HOA, reset buttons
- Current imbalance, overcurrent, undercurrent, phase loss, shorted load, and ground fault protections standard
- Soft stop feature eliminates water hammer
- Run pilot light
- Emergency stop push button
- Illuminated fault/reset push button

Rated Power	230V	250 HP
	460V	500 HP
Max Full Load Amps		600 A
Outside Dimensions		48x33x16
Input Voltage	208-480VAC $\pm$ 10%, 50/60Hz Optional 380, 415, 575VAC	
Overload Rating	500% for 30s	
Overload Range	560-840 A	
CT Rating	700:5	
Ambient Conditions	0° to 40 °C, 5-95% relative humidity, 0-3300ft above sea level (Can be designed to operate outside these conditions)	
Inputs	7	dry contacts using 120VAC
Programmable Outputs	3	2-Form C (5A, 240VAC max) 1- Form A 26 programmable functions



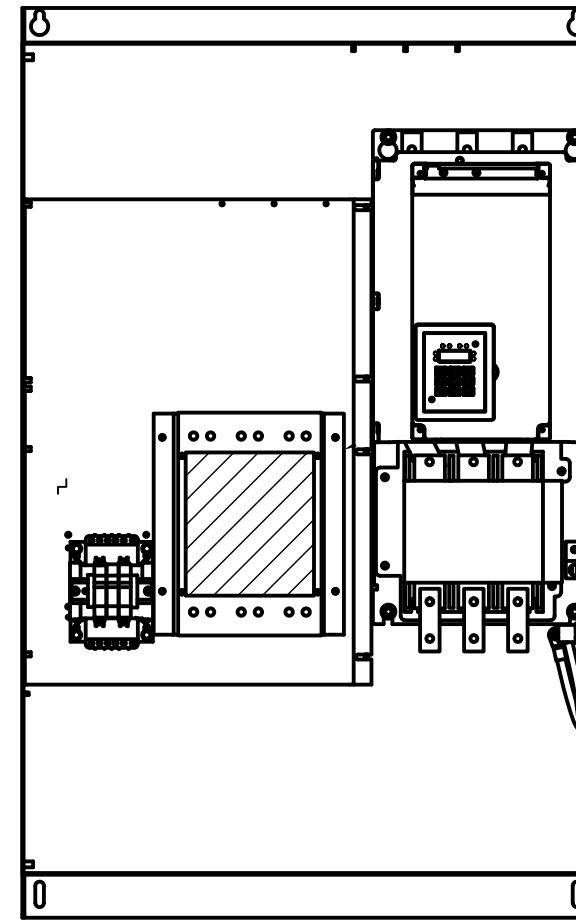
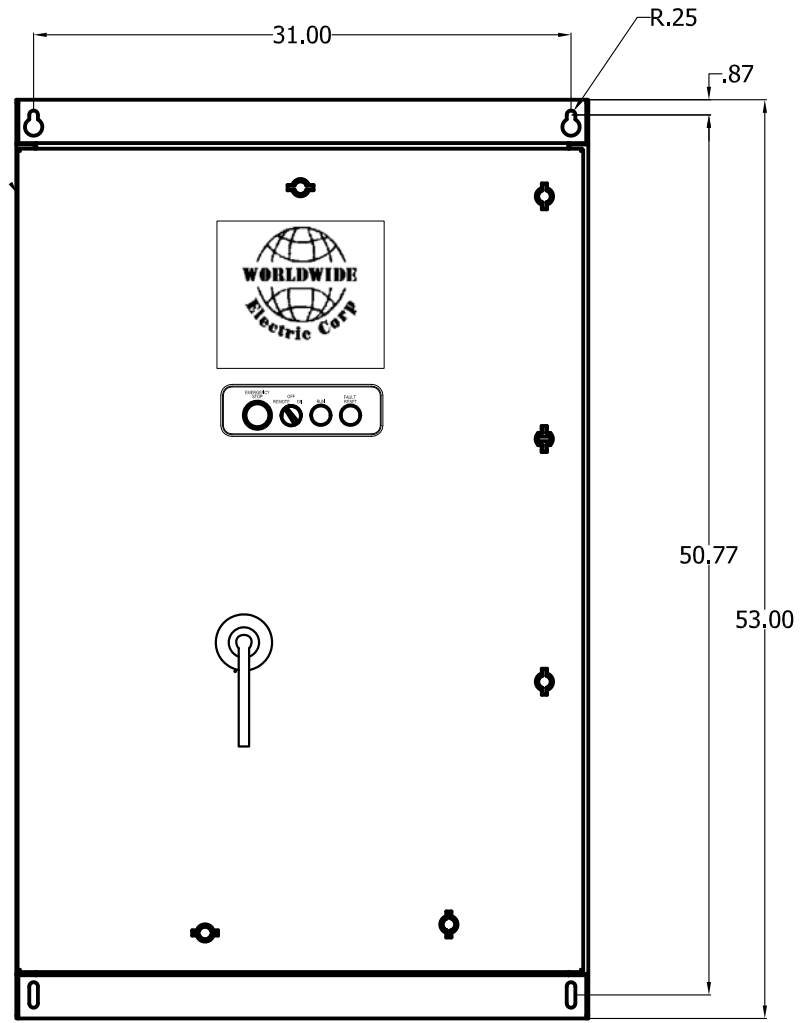
DRIVING & Controlling

WorldWideElectric

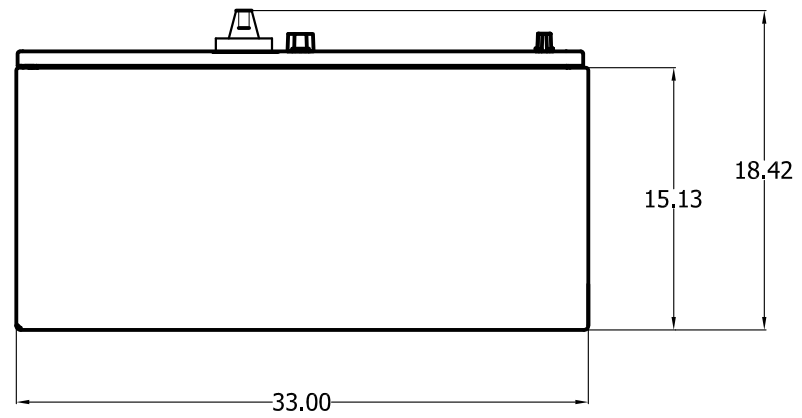
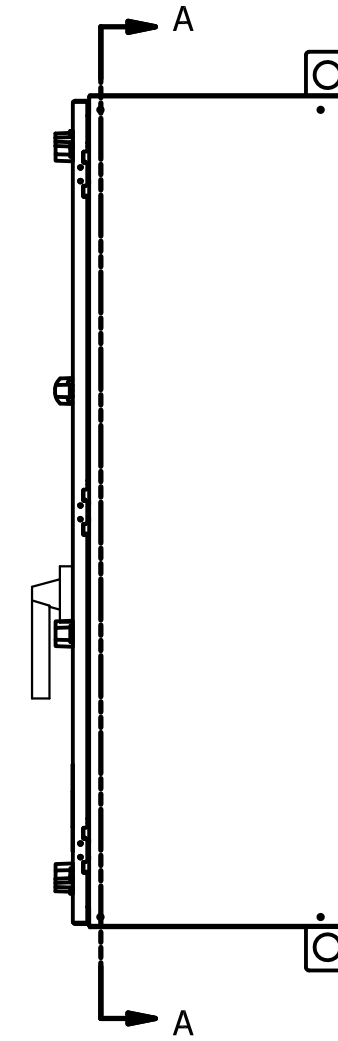
# Industry

WWEPICSSRV12-500

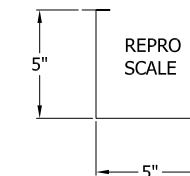
REV NO	REVISION	DATE	BY
D	UPDATED	7/24/15	GC



SECTION A-A



NOTE  
1. UNITS ARE NEMA 4 RATED.



	800-808-2131		
	3540 WINTON PLACE ROCHESTER, NY 14623		
WWEPICSSRV12-150/500 ASSEMBLY DRAWING			
SCALE NOTED	DRAWING NUMBER VMX-0140	DRAWN BY C.L. CHK'D. BY	REV. BY GFC
SHEET 1 OF 1	REV. No. D	DATE 06/16/2015	