

Industrial Motor Accessories

Extending Your Motor Applications



WORLDWIDE
ELECTRIC CORPORATION

(800) 808-2131

worldwideelectric.com

MOTOR SHAFT PROTECTION

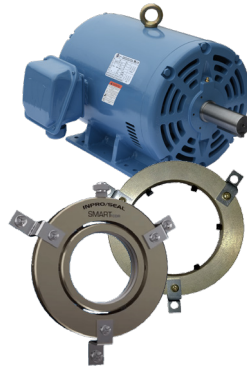
Protect your motor and connected equipment from damaging shaft currents. Our shaft grounding accessories divert currents away from the motor bearings to ground. External grounding protection also allows ground testing and replacement without the need to open the motor housing – simplifying service and reducing downtime.

- Improves reliability of VFD-driven motors or coupled equipment
- Protects bearings from harmful stray shaft currents
- Low Maintenance once installation
- Not affected by temperature, humidity, or atmosphere

Open Drip Proof Motor Grounding Rings

WorldWide Electric Open Drip Proof (ODP) motors 143T and above are pre-drilled and tapped to accept grounding rings. You can also order your ODP motor with a grounding ring already installed from the factory.

- Frame Sizes 143 to 445
- T & TS compatible



We also offer *Inpro*® Current branded grounding rings.

PEWWE Series Motor Bearing Protectors

Easy to install and include an integral bracket for easy mounting.

- Frame Sizes 364 - 587



FRACTIONAL MOTOR BRAKES

Stearns Double C-Face Coupler Brakes

Designed for standard NEMA C-Frame: 56C motor and quill input C-Flanges motors. They are suitable for use with our full line of Fractional hp Motors, including General Purpose, Permanent Magnet DC, and Fractional Farm Duty Motors. The two standard stock parts eliminate the need for specially designed brake motors for many applications.

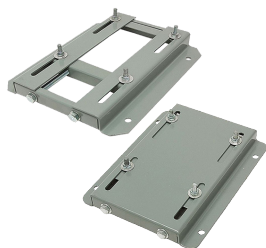


- Self-adjusting
- Solenoid actuated brake (SAB)
- Torque lb-ft: 1.5, 3, 6, 10
- IP54 protection
- Manual release knob
- AC operated coil Voltage: 115/230 (Vac 60 Hz), 230/460 (Vac 60 Hz)
- CSA Certified File LR6254
- RoHS3 compliant

INSTALLATION ACCESSORIES

Universal Motor Slide Bases

Universal Motor Slide Bases are a drop-in replacement for most major brands and the ideal solution to mount NEMA standard electric motors. They are ideal for tensioning belts and any application where fine adjustment of motor position is required. Generously cut slide channels allow easy and painless motor positioning. All D Bolts (motor mounting bolts) are Grade 5 for strength, welded into position to prevent spinning and “dropping” from slots, and fixed to the exact foot pattern of the motor to aid in easier motor installation.



- Exact drop-in replacement for all major brands
- Steel construction with oven-baked primer for better adhesion of customer's paint
- Single adjusting screws for frames 56-145T
- Double adjusting screws for frames 182T-505T

Vertical Hollow Shaft Motor Bases

VHS motors are ideal for standard and high-thrust turbine pump applications, such as pivot systems, deep wells, and groundwater pumping applications. We offer alternate base sizes as required for specific applications.



**NEMA
Premium**

Vertical Hollow Shaft Motor Couplings

We offer alternate coupling sizes as required for specific applications. Compatible NEMA Frame Sizes include:

- 215 - 445 TP Frame
- 5000P/5008P Frame



Vertical Hollow Shaft Motors are supplied with the appropriate sized motor base and coupling at purchase.

Worldwide Electric flange kits offer simple field conversion of a standard motor to a C-Flange, D-flange or IEC mounting.

C-Flange Kits

Compatible NEMA frame sizes include:

- ODP Motor 56 Frame, 143 - 405 T Frame
- Farm Duty Motor 145, 215 and 182/184 T Frame
- LAM Marine/Severe Duty Motor 143 - 449 T Frame
- PEWWE Severe Duty TEFC Motors 143 - 587 T Frame

D Flange Kits

Compatible NEMA frame sizes include:

- LAM Marine/Severe Duty Motor 143 - 587 T Frame
- PEWWE Severe Duty TEFC Motors 143 - 587 T Frame

IEC Flange Kits

Compatible IEC Metric frame sizes include:

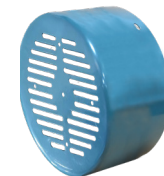
- IEC Motor FF-Flanges 63 - 160 Frame
- IEC Motor C-Flanges 63 - 132 Frame



LAM Marine/Severe Duty Motor Cast Iron Fan Cover Kits

Compatible NEMA frame sizes include:

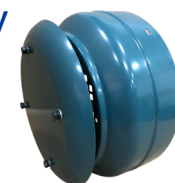
- 143 - 587 T Frame



LAM Marine/Severe Duty Motor Drip Cover Kits

Compatible NEMA frame sizes include:

- 143 - 587 T Frame



Please Note: Specifications for all products shown depend on model and configuration selected.