



Gear Reducers Line Card

Proven Products to Provide Reliable Uptime

No matter what industry – agriculture, construction, aggregate, material handling, oil and gas, irrigation, wastewater, food processing, or manufacturing – we know every moment of downtime reduces productivity and impacts the bottom line. That’s why we still live by our founding customer-centric philosophy -providing quality products, a large selection of in-stock inventory, and fast shipping, all backed by exceptional customer support.



WORLDWIDE
ELECTRIC CORPORATION



Responsive
Service & Technical Support



Quality Products
Competitive Pricing



In Stock Availability
Warehouses Nationwide

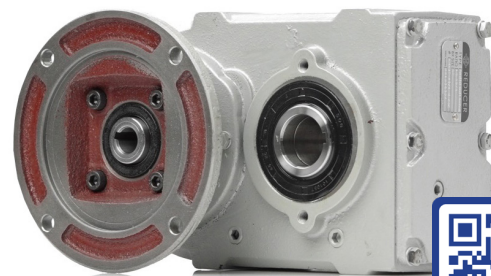


Fast Shipping
Same-Day Available

FHN Series Parallel Shaft Helical Gear Reducer

Universal compatibility with NEMA C-face motors, a hollow bore output, and a broad range of power and output torques support many industrial process applications.

The WorldWide Electric FHN Parallel Shaft Helical Speed Reducers reduce output speed (RPM) and increase torque. The helical gear design provides high efficiency for your applications, such as driving belt, screw and chain conveyors, presses, extruders, and gantry cranes. Powerlock options available.



FHN Series



< Accessories on Back Page

- Ratios: 4:1 – 110:1
- Power Lock Ratios 87 – 97
- HP Range: ¼ hp to 25 hp
- Power Lock HP Range: ¾ hp to 25 hp
- All cast iron housing for unquestioned strength and reliability
- Two-year Warranty
- 20rMo alloy steel gears reduce stress, corrosion and noise
- Precision machined gears for quieter operation and superior strength
- Flanges designed to accept NEMA C-face motors
- Drop-in compatibility with most major European-produced reducer brands
- Embedded, double-lipped seals on shafts and hubs keep oil in and contaminants out.
- Pre-filled with Mineral oil (Mobil HD320) for M1 mounting position
- Two-year warranty

The "Original" Shaft Mount Gear Reducer

SMR Series offer quality and dependability and can directly replace existing equipment and are a **drop-in replacement for Dodge TXT reducers**. They are commonly used to transmit power to conveyors and material handling equipment.

- Box Size: 2 - 12
- Speed Ratio: 15:1 and 25:1
- TXT Compatible, drop-in replacement



The Original
SMR Series



The "Hydraulically-Powered" Shaft Mount Gear Reducer

HYSMR Series reducers are a **drop-in replacement for Dodge TXT reducers** and is designed to accept all HXT compatible accessories without issue.

- Box Size: 3 - 5
- Speed Ratio: 15:1 and 25:1
- HXT Compatible, drop-in replacement
- Accepts B30 hydraulic input motors
- SAE B two bolt mounting
- SAE B involute spline input 13 Teeth 13/32 DP



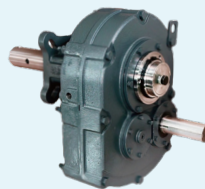
Hydraulic
HYSMR Series



The "Screw Conveyor" Shaft Mount Gear Reducer

SCSMR Series reducers are a **drop-in replacement for Dodge TXT reducers** for traditional conveyor and screw conveyor applications. They accept CEMA-rated screw conveyor flanges, CEMA-rated drive shafts, and all TXT compatible accessories.

- Box Size: 2 - 10
- Speed Ratio*: 9:1, 15:1 and 25:1
- TXT Compatible, drop-in replacement



The Eliminator
SCSMR Series



*9/1 ratio is only offered on box sizes 2 - 6.

Built for Industry

All WorldWide Electric Shaft Mount Reducers offer:

- Drop-in replacements for Dodge TXT or HXT units.
- Two-year warranty
- Torque arm included
- Extended gear centers and tooth contact
- Shafts and gears made from high-grade steel, case hardened and precision ground to A.G.M.A. Standards
- Metal-reinforced, spring-loaded, double-lip seals
- Premium ball and tapered roller bearings
- FCD45 cast iron housing



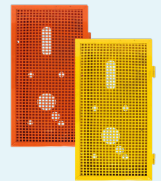
Backstop Assemblies

Backstops prevent reverse motion. Available in box sizes 2 - 12.



Belt Guards

Belt guards help keep your employees safe from moving parts. Available in box sizes 2 - 12.



Motor Mounts

Provide versatile options for mounting motors. Available in box sizes 2 - 12 and offer NEMA Frame size compatibility.



Screw Conveyor Flanges & Drive Shafts

Heavy duty construction, precision machining to conform to CEMA standards. Easy installation. Available in box sizes 2 - 6.



Torque Arms

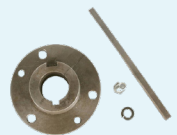
Increase stability and provide easy and accurate tensioning and tightening. Available in box sizes 2 - 12.

(Check compatibility against SMR/SCSMR and WSMR models.)



Tapered Bushing Kits

Kits are used on both sides of a gear reducer, which provides tapered support for the shaft. The kit includes fastening bolts and a full-length shaft key.



Rebuild Kits

Designed for full-service maintenance of an SMR Gear Reducer. The kit includes a high-speed input shaft, first gear reduction gear, input bearings, and input and output seals.



Stainless Steel Worm Gear Reducers

The SSHdR Series feature a flange input/hollow bore output design and provide exceptional value for applications where food-grade or corrosion resistant equipment is required. These **BEAG/BISSC Certified** reducers offer IP69K Protection for close-range high pressure, high temperature spray downs.



SSHDR Series



- Box sizes 175 to 325
- Ratios 5:1 to 100:1
- Input compatibility: 56C, 143TC, 145TC
- Stainless steel bushing kits can be used to adjust the output bore size
- Performance matches other major brands
- Pre-filled with food-grade lubricant (Mobil CIBUS 460 H1)



Output Flanges & Covers

Stainless steel flanges for box sizes 175, 206, 237 and 262. Stainless steel covers for 1- $\frac{3}{4}$ " - 3- $\frac{1}{4}$ " center distances.



Bushing Kits

Available in sizes 1- $\frac{3}{4}$ " - 3- $\frac{1}{4}$ " center distances. Kits includes sizing inserts, keys, and set screws.

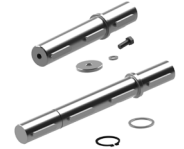


Hollow Output Shaft Oil Seals

Tapered seals (qty x2) for 1" - 2- $\frac{3}{16}$ " bore sizes.

Single & Double Output Shafts

Available in $\frac{7}{8}$ " - 1- $\frac{1}{2}$ " diameters. Kits includes a shaft, keys, endplate, and bolt, or retaining rings and C-clips as required.



Aluminum Worm Gear Reducers

The lightweight CALM Series feature a hardened worm shaft for increased durability, two bearings on all input and output shafts for reliable performance, and multiple mounting holes for all angle mounts. **NEMA and IEC Metric** input flange and hollow output bore sizes ensure compatibility with many applications.



CALM Series



- Box sizes 30 to 90
- Ratios 7.5:1 to 90:1
- Center distances 30 - 90 mm
- NEMA or IEC Metric motor input flanges
 - NEMA: 56C, 145TC, 182/4TC
 - Metric: 63B14, 71B14, 80B14, 90B14, 100B14, 112B14
- Performance matches other major brands
- Pre-filled with synthetic oil (Mobil SHC632)

Output Flanges & Covers

Aluminum output flanges & covers for box sizes 30 - 90.



Drain Plugs

Replacement drain plugs for box sizes 30 - 90.



Torque Arms

Increased stability - for box sizes 30 - 90.



Single & Double Output Shafts

Available for box sizes 30 - 90 and shaft diameters of $\frac{5}{8}$ " to 1- $\frac{3}{8}$ ".



Input & Output Flanges

Available for all shaft sizes. Kits includes bolts and lock washers.



Bushing Kits

Available in output bore sizes 1- $\frac{1}{8}$ " - 1- $\frac{15}{16}$ " center distances (Inner diameters 1" - 1- $\frac{1}{2}$ "). Each kit includes sizing inserts, keys, and set screws.



Base Mounting Kits

Available in box sizes 133 - 325. Kits include one base and four mounting bolts.



Replacement Parts

- Breather Plugs & Shaft Set Screws
- Bearings for all shaft and hollow bore sizes.
- Oil Seals/Sealed Oil Seals for all shaft and hollow bore sizes.



Heavy-duty Cast Iron Worm Gear Reducers

The HdR Series feature solid, one-piece cast iron construction, durable carbon steel shafts, and the flexibility of multiple configurations. Featuring universal **interchangeability with the Boston 700 series** and other equivalent brands.



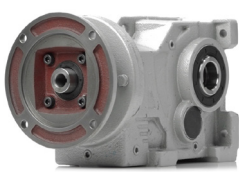
HDR Series



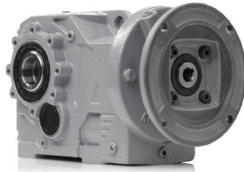
- Box sizes 133 to 325
- Ratios 5:1 to 60:1
- Center distances 1.33" - 3.25"
- Input compatibility: 56C, 145TC, 182/4TC
- Pre-Filled with synthetic oil (Mobil SHC632)

Helical Bevel Gear Reducers

The KHN and KAN Series deliver a broad range of power and output torque to support a wide array of applications. A standard NEMA quill input design simplifies the task of retrofitting as it is universally compatible with any C-Face motor. The KHN Series gear reducer features a foot-mounted design while the KAN Series reducer is available with a torque arm or flange mounted design.



KHN Series



KAN Series



- Box Sizes: 37 - 97 | Power Lock 87, 97
- Speed Ratio: 5:1 - 120:1 | Power Lock 7.5:1 - 120:1
- HP Range: ¼ hp to 30 hp
- Powerlock option available (Model specs. above)
- All cast iron housings and hollow output bores
- NEMA C-Face, no coupling required
- Drop-in compatibility to most major European brands
- Two-year warranty
- Pre-filled with HD320 Mineral Oil for M1 mounting position
- Embedded, double-lipped seals on shafts and hubs keep oil in and contaminants out
- Gears supported by generously sized precision ball and tapered bearings

Single Output Shafts

Used to convert a hollow bore output unit into a shaft output unit. The kit includes a single output shaft, key, endplate, and bolt. **FHN/KHN/KAN** (except with B5 flange.)



Double Output Shafts

Used to convert a hollow bore output unit to a double shaft output unit. The kit includes a double output shaft, key, retaining ring, and C-clips. **KHN/KAN** (except when KAN reducer features a B5 flange.)



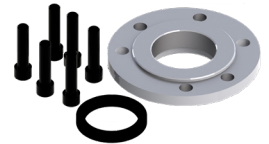
Extended Single Output Shaft for use with a B5 Flange

Used to convert a hollow bore output unit into a shaft output unit with B5 flange. The kit includes the single output shaft, key, endplate, and bolts. B5 flange also sold separately. **FHN/KAN**.



B14 Output Flange

Converts a unit to a B14 Output Flange. Kit includes B14 output flange, double lip output seal, and mounting bolts. **FHN/KAN**.



Torque Arm

Available box sizes 37- 97. The kit includes the torque arm, mounting bolts, and lock washers. **KAN**.



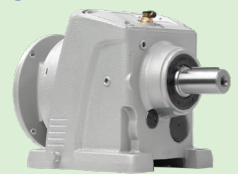
Screw Conveyor Flanges & Drives Shafts

Adapts a FHN series for screw conveyor applications. **FHN**. (Flange & Shaft Sold Separately.)



Helical Inline Gear Reducers

Delivering a broad array of output torque and speed, the WINL Series are engineered to support a wide range of applications including fans, pumps, conveyors, material handling equipment, packaging machines, and textile machinery.



WINL Series

- Box sizes 37 to 147 | ¼ to 100 hp
- 2:1 to 120:1 ratios
- NEMA C-Face, no coupling required
- Two-year warranty
- Dimensionally equivalent to European R Series brand



(800) 808-2131 | worldwideelectric.com