

Electric Motor Line Card

Industrial Products - Reliable Designs



Product in Focus

Severe Duty Motors

WorldWide Electric's Louis Allis motors are our premium, severe-duty motor - built to meet IEEE 45 requirements and ABS-Type approved for wet and taxing marine and severe-duty applications. These inverter-duty, premium-efficient motors are high torque rated and offer impressive features to deliver IP55 protection, such as a metal-clad V-ring on the drive end and an oil seal on the opposite drive end of the shaft. They also come with our most extended motor warranty- 3 years, because we know they handle demanding environments and severe-duty applications.

- Totally Enclosed Fan Cooled (TEFC) | IP55
 LOUIS ALLIS



- 1 to 500 hp | 3600, 1800, 1200, and 900 rpm | 60 Hz
- 230/460 Volts (1-200 hp), 460 Volt-only (250 - 500 hp)
- 1.25 SF (1-200 hp), 1.15 SF (250 - 500 hp)
- Inverter duty, 10 :1 CT / 20:1 VT (1.0 SF)
- Design B and NEMA premium efficiency
- Class 1 Div. 2 Groups A,B,C,D (NEC)
- UR, CE, IEEE 45, CC306B
- Heavy gauge rolled steel fan cover
- Metal clad V-Ring on DE, oil seal on ODE
- Frame Suffix Options: T, TC, TS, TSC, TCRD



WORLDWIDE[®]
ELECTRIC CORPORATION

No matter what industry - agriculture, construction, aggregate, material handling, oil and gas, irrigation, wastewater, food processing, or manufacturing - we know every moment of downtime reduces productivity and impacts the bottom line. That's why we still live by our founding customer-centric philosophy - providing quality products, a large selection of in-stock inventory, and fast shipping, all backed by exceptional customer support.



Responsive
Service & Technical Support



Quality Products
Competitive Pricing



In Stock Availability
Warehouses Nationwide

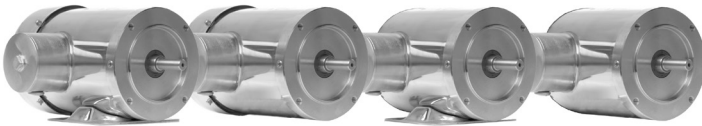


Fast Shipping
Same-Day Available

Wash-down Motors

Stainless Steel Motors

Our Fractional and Premium Efficient TEFC and TENV Stainless Steel motors offer complete protection from water, dust, and oil. They are ideal for conveyors, pumps, and material handling applications in the food and beverage, pharmaceutical, and poultry industries.



Premium Efficient Stainless Steel Motors

Three-phase, premium efficient, **IP69K** rated, BISSC/BEAG certified motors offer protection against close-range, high-pressure, high-temperature spray downs

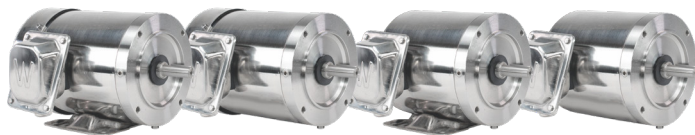


- TEFC: 1/3 - 20 hp | 3600 and 1800 rpm
- TEFC: 1/2 - 5 hp | 1200 rpm
- TENV: 1/3 - 3 hp | 3600 and 1800 rpm
- 230/460 Volts, 60 Hz
- 190/380 Volts, 50 Hz, with 1.15 SF (Derate in hp)
- C-Face with feet and round body (footless)
- NEMA Design B
- Oil seal on DE and ODE
- Welded junction box with epoxy potted leads
- C-Face with feet (welded on) or round body (footless)
- Premium efficient models offer a three-year warranty

JM-Series

Three-phase, close-coupled pump motors suitable for installations utilizing a mechanical seal.

- TEFC, C-Face with feet only
- 1 - 20 hp at 3600 and 1800 rpm

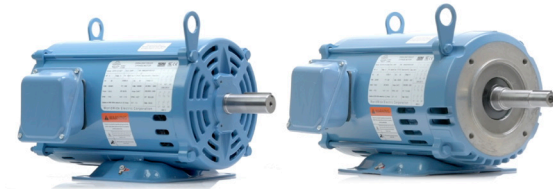


Fractional Stainless Steel Motors

Three-phase motors offer **IP56** water-tight protection for wash-down applications.

- TEFC or TENV
- 1/2 - 3/4 hp
- 1 - 2 hp Premium Efficient
- 1800 and 3600 rpm
- 56C Frame size, double lip seals with an additional shaft slinger on the drive-end
- C-Face with feet and round body (footless)

Open Drip Proof Motors



Open Drip Proof (ODP) Motors

Ideal for use in HVAC and refrigeration equipment, air compressors, and general purpose installations where cooler-running, non-enclosed motors are required.

- 1/2 - 200 hp | 3600, 1800, and 1200 rpm
- 230/460 Volt, 60 Hz
- IP23 protection
- 1.15 SF
- Enclosure: rolled steel frame (56 - 324/6T)
- Double drilled feet to accommodate mounting flexibility (143T - 445T) or F1 to F2 conversions
- Lifting eyes on larger models assist with installation
- Rigid base on all models, except 56 Frame which has C-Face with removable base.

200 Volt (143T - 326T)

- 1 - 50 hp | 3600 and 1800 rpm
- 200 Volt, 60 Hz
- Double drilled feet to accommodate mounting flexibility (143T - 326T)



56HZ Frame Rigid Base

- 3 hp | 1800 rpm
- Mounting Dimensions for 56, 143T, and 145T frames with 7/8" Diameter Shaft



Cast Iron Frame (364/5T - 444/5T)

- 60 - 200 hp | 3600 and 1800 rpm
- 230/460 Volt, 60 Hz

Grounding Rings

WorldWide Electric Open Drip Proof (ODP) motors 143T

and above are pre-drilled and tapped to accept grounding rings. You can also order your ODP motor with a grounding ring already installed from the factory.

- 143 to 445 Frame Sizes
- T & TS compatible

ODP Motor C Flange Kits

- 56 Frame Sizes
- 143 - 445T Frame Sizes



Fractional Motors

Farm Duty Motors

WorldWide Electric's Totally Enclosed Fan Cooled (TEFC) Farm Duty motors support general-purpose agricultural applications, such as moving materials on conveyors, lifts, screws, augers, and elevators, or for driving fans and centrifuges when ventilating, drying, or aerating storage bins and buildings.



Integral

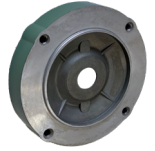
- 2 - 10 hp | 1800 rpm
- 230 Volt, 60 Hz
- IP55 protection
- Rigid Base or C-Face/Feet

Fractional

- 1/3 - 2 hp | 1800 rpm
- 115/230 Volt, 60 Hz
- IP54 protection
- Rigid Base or C-Face/Feet

C Flange Kits for Farm Duty Motors

- 145, 215 and 182/184 T Frame Sizes



*NATE Series Only



General Purpose Fractional Motors

Totally Enclosed Fan Cooled (TEFC) with IP43 protection and rigid base, C-Face with removable base (CB), or C-Face round body (CRD) options.

TEFC Single-phase

- 1/3 - 2 hp
- 1800 and 3600 rpm
- 115/230 Volt, 60 Hz
- 1.5 to 2 hp Capacitor Start/Run
- IP43 protection

TEFC Three-phase

- 1/3 - 3 hp
- 1800 and 3600 rpm
- 115/230 Volt, 60 Hz
- 1 to 3 hp Premium Efficient*
- IP43 protection



*NATJE, OJ & ODPJ Series Only



Jet Pump Motors

Our Electric Jet Pump motors feature a high-torque and durable design to effectively power industrial, commercial, and residential pumping solutions such as water wells, and more.

TEFC Single-phase

- 1/3 - 2 hp | 3600 rpm
- 115/230 Volt, 60 Hz
- IP43 protection

ODP Single-phase

- 1/3 - 3 hp | 3600 rpm
- Premium Efficient
- 115/230 Volt, 60 Hz
- IP23 protection

TEFC Three-phase

- 1/3 - 3 hp | 3600 rpm
- 1 - 3 hp Premium Efficient
- 230/460 Volt, 60 Hz
- IP43 protection

ODP Three-phase

- 1/3 - 5 hp | 3600 rpm
- Premium Efficient
- 230/460 Volt, 60 Hz
- IP23 protection

DC Motors

Permanent Magnet DC (PMDC) motors are ideal for applications that require simple variable speed control and high starting torque.

- 90, 180, 12, and 24 Volt
- TENV | 1/4 - 1/2 hp | 1800 rpm
- TEFC | 3/4 - 2 hp | 1800 rpm
- C-Face with removable base
- 20:1 Speed range at constant torque
- IP54 protection



Stearns Double C-Face Coupler Breaks

Designed for standard NEMA C-Frame: 56C motor and quill input C-Flanges motors - eliminate the need for specially designed brake motors for many applications.

- Torque lb-ft: 1.5, 3, 6, 10
- IP54 protection
- Manual release knob
- AC operated coil Voltage
 - : 115/230, 60 Hz
 - : 230/460, 60 Hz
- Self-adjusting with Solenoid actuated brake (SAB)

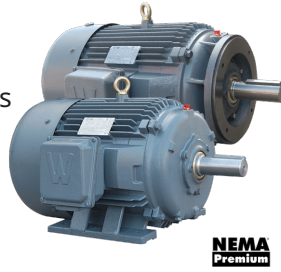


Severe-Duty Motors



Premium Efficient, Severe Duty Motors

Reliable, high performance motors well-equipped to power industrial application, including conveyors, pumps, fans, compressors, blowers, hydraulic units, and more.



- 1 to 500 hp | 3600, 1800, 1200, and 900 rpm
- Frame size 143T to 586/7, rigid base or C-Face & feet (TC)
- 230/460 Volts at 60 Hz (1 - 200 hp)
- 460 Volts (250 - 500 hp)
- 1.25 SF (1 - 200 hp)
- 1.15 SF (250 - 500 hp)
- Inverter duty | 10:1 CT / 20:1 VT at 1.0 SF (1 - 400 hp)
- Inverter ready | 3:1 CT / 6:1 VT at 1.0 SF (450 - 500 hp)
- IP55 protection
- Oversized bearings
- Heavy gauge rolled steel fan cover
- Metal clad V-ring seals
- CSA Certified Class 1, Div. 2, Grp A, B, C, D (1 - 500 hp)
- Frame Suffix Options: T, TC, TS, TSC
- Model Options:
 - BB: Ball bearing on drive-end (Direct Coupled)
 - IB: Insulated opposite drive-end bearing (ODE)
 - R: Roller bearing on drive-end (Drive Belts)
 - DD: Double drilled feet
 - FC: F1/F2 convertible

Closed-couple Pump Motors

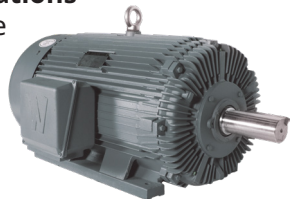
Designed to meet the demands of industrial and commercial centrifugal pump applications requiring JM or JP shafts.



- 1 - 50 hp | 3600 and 1800 rpm
- 143 - 326 Frame Sizes

Severe Duty for Crusher Applications

Our Rock Crusher Motors provide high starting and breakdown torques for high-impact, heavy-duty applications, such as aggregate conveyors and lifts.



- 200 - 600 hp | 1800 and 1200 rpm
- IP55 protection and premium efficiency
- 4140 high tensile strength steel shaft
- FC200 density cast iron frame

Snorkel, Top-Mounted Conduit Design

300 to 500 hp motors in L449 frame sizes are available with field convertible F2 mounting configuration.



Severe Duty Motor Drip Cover Kits & Cast Iron Fan Cover

- 143 - 587T Frame Sizes



Worldwide Electric flange kits offer simple field conversion of a standard motor to a C-Flange, D-flange or IEC mounting.

C-Flange Kits

- LAM Severe Duty Motor 143 - 449T Frame Sizes
- PEWWE Severe Duty TEFC Motors 143 - 587T Frame Sizes



D Flange Kits

- LAM Severe Duty Motor 143 - 587T Frame Sizes
- PEWWE Severe Duty TEFC Motors 143 - 587T Frame Sizes



Motor Bearing Protectors

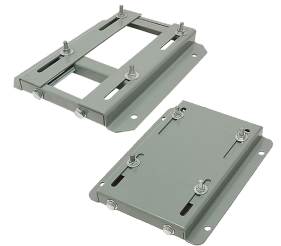
Easy to install and include an integral bracket for easy mounting.

- 364 - 587 Frame Sizes



Universal Motor Slide Bases

Universal Motor Slide Bases are a drop-in replacement for most major brands and the ideal solution to mount NEMA standard electric motors. They are ideal for tensioning belts and any application where fine adjustment of motor position is required. Generously cut slide channels allow easy and painless motor positioning. All D Bolts (motor mounting bolts) are Grade 5 for strength, welded into position to prevent spinning and "dropping" from slots, and fixed to the exact foot pattern of the motor to aid in easier motor installation.

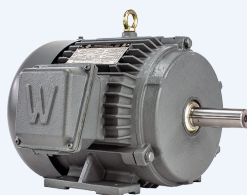


- Exact drop-in replacement for all major brands
- Steel construction with oven-baked primer for better adhesion of customer's paint
- Single adjusting screws for frames 56-145T
- Double adjusting screws for frames 182T-505T

Definite Purpose Motors

Grain Dryer-Centrifugal Fan Motors

Three-phase, high-performance motors withstand harsh environments with vibration, heat, dust, and debris, providing reliable performance under heavy daily usage. Ideal for high-impact, heavy-duty grain drying and centrifugal fan applications in agriculture and farming. They feature an extended shaft and extended leads for these specific applications. PEWWE series motors with a GD designation also provide high starting and breakdown torques, oil seals on both shaft ends, and oversized, double-shielded ball bearings on all ratings.



- Extended shaft and extended leads
- 1 - 50 hp | 1800 rpm
- 230/460 Volts at 60 Hz
- CSA Certified - Class 1, Division 2, Groups A, B, C, D

Vertical Hollow Shaft Motors

For use in standard and high-thrust turbine pump applications, such as pivot systems, deep wells, and groundwater pumping applications. VHS motors offer premium efficiency, corrosion-resistant epoxy paint, epoxy-coated rotor and windings, and a felt end bell seal that protects from pump seal failure.



- 10 - 500 hp | 1800 rpm
- IP23 weather protected enclosure
- Standard coupling size included
- Double thrust bearing (100-500 hp) for deep applications
- Two-year warranty

Motor Bases

VHS motors are ideal for standard and high-thrust turbine pump applications, such as pivot systems, deep wells, and groundwater pumping applications. We offer alternate base sizes as required for specific applications.

Motor Coupling

We offer alternate coupling sizes as required for specific applications.

- 215 - 445TP Frame Sizes
- 5006P/5008P Frame Sizes



Explosion Proof Motors

Totally Enclosed Fan Cooled Explosion Proof (TEXP) enclosure with IP 55 protection for industrial applications with the presence of highly combustible, pervasive materials. Fully tested and certified for explosion proof classification in Class 1 Division 1 Groups C & D and Class 2 Division 1 Groups F & G.



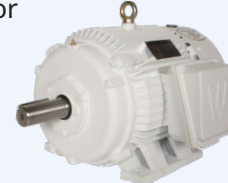
- 1 - 300 hp | 3600, 1800, and 1200 rpm
- 230/460 Volt (1 - 100 hp), 460 Volt (125 - 200 hp)
- Rigid base (T/TS)
- Premium efficiency (1 - 200 hp)
- Inverter duty, 5:1 CT / 10:1 VT (1 - 200 hp)

Oil Well Motors

Designed for maximum run time and harsh environments of oil production. Features include high torque performance with high slip NEMA Design D and oversized bearings for heavy duty belt drive applications.

Totally Enclosed Fan Cooled (TEFC)

- 3 - 150 hp | 1200 and 900 rpm
- 230, 460, and 796 Volt
- IP55 protection



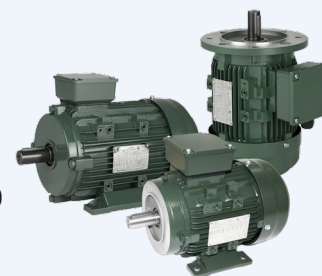
Open Drip Proof

- 7.5 - 100 hp | 1200 rpm
- 230, 460, and 796 Volt
- IP23 protection



IEC Metric Motors

Designed for the needs of our customers utilizing equipment manufactured overseas. Our IEC motors operate at IE3 Efficiency at 50 Hz and are NEMA Premium Efficient at 60 Hz operation.



- Totally Enclosed Fan Cooled (TEFC) Enclosure
- ¼ - 25 hp | 3600, 1800, and 1200 rpm
- 230/460 Volt, 60 Hz
- 190/380 Volt, 50 Hz
- IP55 protection
- IEC60034-1 & CE Certified

IEC Flange Kits

- FF-Flanges 63 - 160 Frame Sizes
- C-Din Flanges 63 - 132 Frame Sizes



INDUSTRIAL PRODUCTS

Our Products power industry and are designed for demanding applications at affordable and competitive prices. Whether a new installation or a drop-in replacement for another manufacturer's equipment, we provide higher quality and often better features than our competitors.



SERVICE & SUPPORT | (800) 808-2131

WorldWide Electric is proud to offer a highly accessible Sales and Customer Service team, always ready to take your call. Each state has a dedicated Inside Sales Representative, Outside Sales Representative, and Customer Service Representative. You will have the benefit of speaking with the same team of highly seasoned, responsive representatives any time you call. They will also assist you with emergency breakdown support during normal business hours. We also have 24x7 Emergency Breakdown Support.

Technical Support: (844) 993-7378

24x7

IN-STOCK AVAILABILITY

WorldWide Electric stocks over \$70 million in inventory across our 8 regional warehouses to ensure that we have what you need, when you need it.

- Atlanta, GA
- Dallas, TX
- Hernando, MS
- Indianapolis, IN
- Milton, PA
- Rancho Cucamonga, CA
- Seattle, WA
- Warrior, AL

