



LOUIS ALLIS
A WORLDWIDE ELECTRIC COMPANY

CUSTOM SPECIALTY ELECTRIC MOTORS

Engineering | Design | Manufacture | Modifications | Repair | Service



AE Certified



SAI GLOBAL
ISO 9001
Quality



PROVEN EFFICIENCY
VERIFICATION
AN ADVANCED ENERGY
MOTOR RENEWAL PROGRAM

Over 100 Years of Expertize — louisallis.com

EVERY INDUSTRY ANY APPLICATION

Unique & Capable
Specialty Motor Manufacturer

Financially Stable
A WorldWide Electric Company

Resourceful
Design & Engineering Services

**Your
Partner**

Expert Knowledge
Specifications & Applications

Complete Lifecycle
Maintenance, Repairs & Servicing

Quality & Trust
Fully Certified, Rich History



That's right; we specialize in designing, manufacturing, modifying, servicing, and repairing large electric motors for custom and demanding applications.

Specialty Motors Are Our Specialty

Large, custom motors drive many industrial applications or manufacturing process. Motors are designed and built for new applications or to match an existing application, such as a plant expansion. Many existing motors are older, underperforming, and no longer supported by their original manufacturer. For these motors, original specifications or engineering data may not be available to help understand how to repair or replace them. In either case, new or old, Louis Allis excels. We offer a full range of services backed by expert knowledge and craftsmanship you can trust for any motor application.

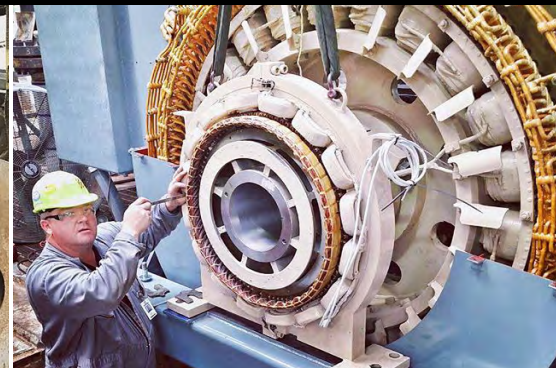
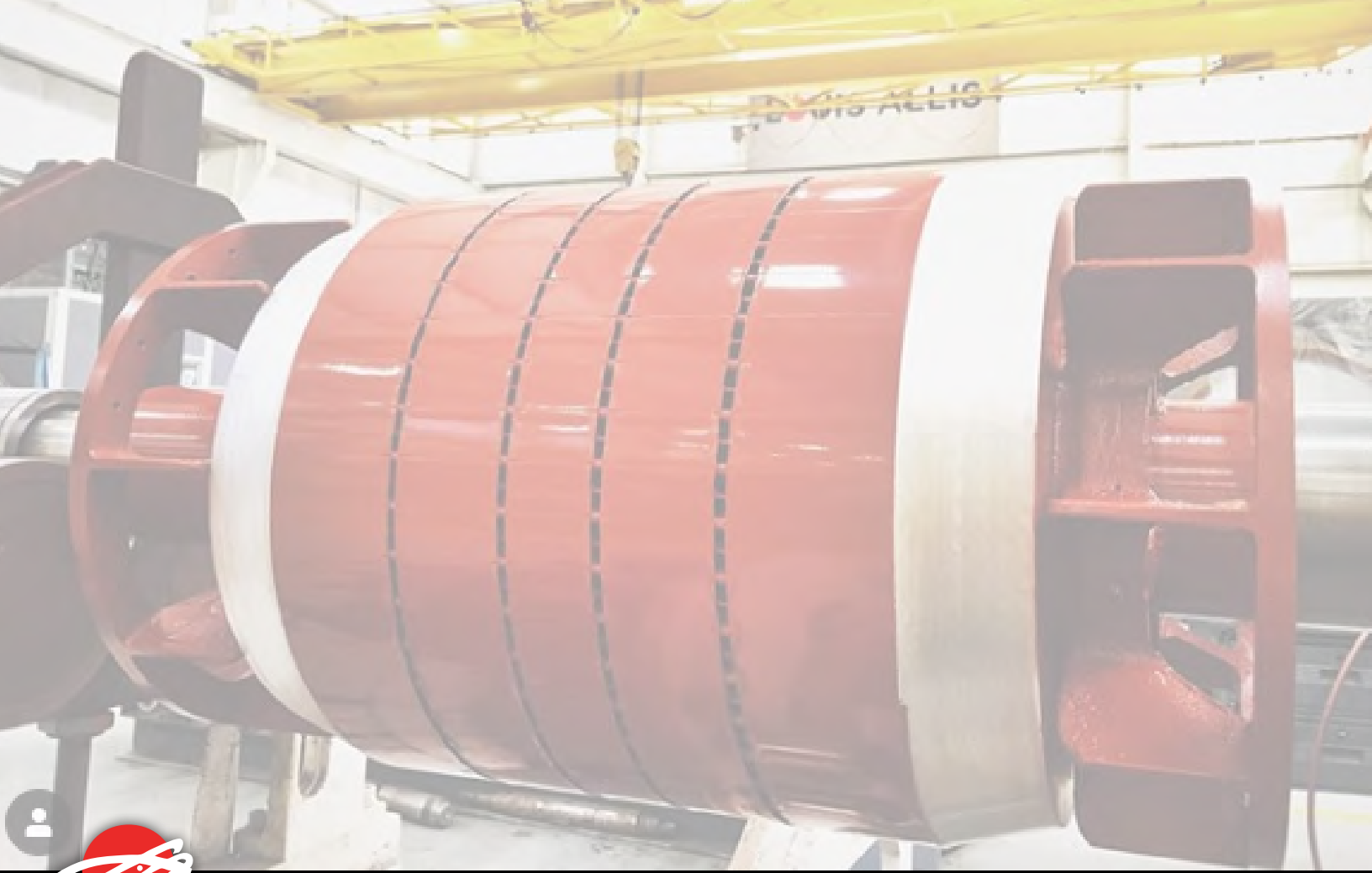
Rich History, Deep Experience

For over 100 years, we have been a global leader specializing in AC and DC electric motors with up to 20,000 horsepower. We focus on unique, custom, and specialty motor applications, regardless of the complexity, that Original Equipment Manufacturers (OEM), other fabrication and repair shops, or motor manufacturers cannot support. We have produced over 2 million motors and more specialty motors than any other U.S. motor manufacturer.

INDUSTRIES

- **Agriculture, Farming and Animals**
- **Chemical and Pharmaceutical**
- **Buildings & Facilities**
 - Education, Health, Government, Industrial, Commercial, etc.
- **Forestry and Logging**
 - Felling, Harvesting, Loading, Processing, etc.
- **Infrastructure, Engineering and Civil Construction**
 - Tunnels, Bridges, Construction Equipment, etc.
- **Finished Good Manufacturing**
 - Food, Beverage, Products, automobiles, etc.
- **Raw Manufacturing Facilities & Mills**
 - Metal, Paper, Plastics, Textiles, Rubber, etc.
- **Military**
 - Aviation, Naval, Bases, Mobile, etc.
- **Mining, Quarrying, and Natural Resources**
 - Aggregates, Coal, Cement, etc.
- **Transit and Transportation**
- **Oil, Gas, Utilities & Power**
 - Coal, Natural Gas, Hydro, Geothermal, Nuclear
- **Waste Management and Remediation**
 - Landfill, Incineration, Recycling, Compaction,
- **Water and Wastewater**

FOR THE MOST **DEMANDING** APPLICATIONS



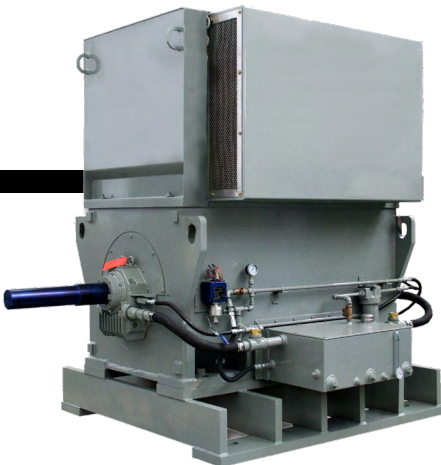
For us, it does not matter who built your motor or when! We can design, build, and manufacture new motors, or modify to match any existing motors – form, fit and function.

EXAMPLE MOTOR DUTY

- Ballmill
- Banberry
- Bow Thruster (Mil-Spec)
- Centrifuge
- Chipper
- Compressor
- Conveyor
- Crusher
- Dredge
- Drill Rig (Design D High Slip)
- Extractor
- Extractor
- Fan (High Inertia)
- Hoist, Winch, Crane
- Hydro Generators
- Kiln Drive
- Military (Mil-Spec)
- Mill
- Mixer
- Nuclear Applications
- Oil Well Pump
- Press
- Propulsion (Mil-Spec)
- Pulverizer
- Pump
- Shaker/Vibratory
- Shredder
- Ventilation-Id Fan
- Vibrator/Shaker

EXAMPLE MOTOR TYPES

- AC Induction (Squirrel Cage)
- AC Synchronous
- AC Wound Rotor
- Aluminum & Lightweight
- DC Motors
- Design D (High Slip)
- Eddy Current Clutches
- Explosion Proof
- Generators - Pancake Style
- Generators - Single & Double Bearing
- High Speed (>3600 Rpm)
- High Torque
- Low, Medium & High Voltage
- MSHA Approved
- Multi-Speed/Variable Speed
- Stainless Steel Washdown
- Turbine Rotor
- Vertical Or Horizontal
- Wound Rotor



BUILD, REPAIR, SERVICE
Call 205-590-2986

We provide fast, alternative solutions to purchasing a new electric motor, whether making a replacement part, modifying a stock motor, supplying an in-stock recertified motor, or building a legacy motor.

Factory Recertification

Our Factory Recertification Program provides a quick, cost-effective alternative to a new motor or custom build. This is an excellent option when encountering an unexpected failure and needing a shorter lead time on a new build.

Suppose you need a spare motor, and budget is a significant factor. In that case, we can modify a surplus motor, mechanically or electrically, to make a “fit and function” backup to your existing motor.

We can also factory recertify your legacy motor to OEM specifications by replacing all internal components while utilizing the existing frame. All of our factory-recertified electric motors are backed by a one-year warranty.

Custom Motor Modifications and Spares

We can modify almost any part of a standard motor to fit a custom application. This is often the quickest and most cost-effective solution to get you up and running or reduce downtime. We can also produce spare parts for inventory to ensure you’re always ready for future events.

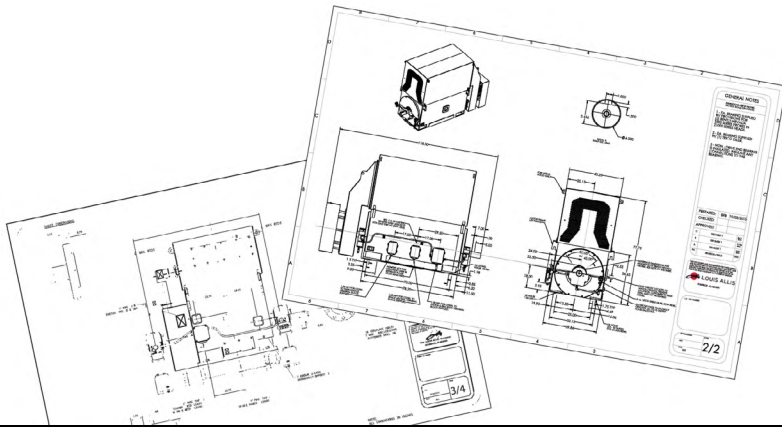


Custom DC Bow Thruster Motor
for the United States Coast Guard



Legacy Motor Designs

We have an unmatched catalog of legacy engineering data, performance specifications, and motor designs for Louis Allis motors and other motor manufacturers. Many large motor manufacturers no longer support specialty motors they made in the past. We can help you; our portfolio allows us to replicate a complete motor or single motor part. You do not have to replace an entire motor or redesign equipment and processes because of a critical failure to a legacy motor.

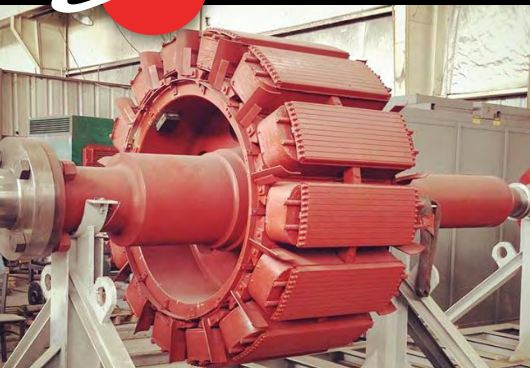
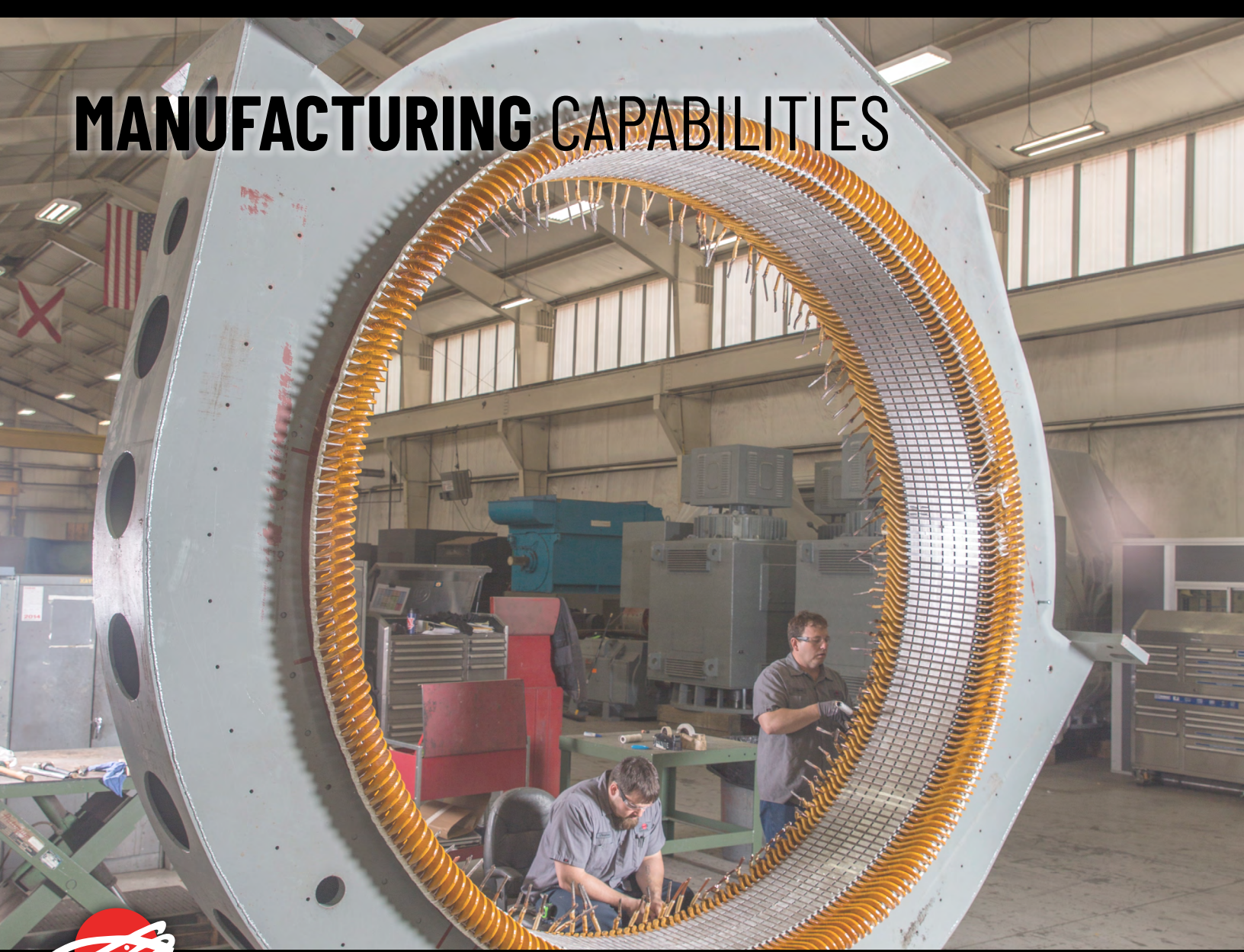


MODIFICATIONS, REPAIRS & SPARE PARTS

- Bearings (Ball to Sleeve)
- Blowers
- Brakes
- Efficiency Improvements
- Encoders
- Endbells
- Flanges
- Frames
- Horsepower Ratings, De-rating, and Re-rating
- Lubrication and Grease Routings
- Lifting Eyes, Feet and Mountings
- Rotors (incl. Design D)
- RTDs
- Screens
- Sealed insulation Systems
- Seals
- Shafts
- Speeds
- Terminal Boxes (F1, F2, F3)
- Voltages
- Windings



MANUFACTURING CAPABILITIES



We have the facilities and capabilities to manufacture, repair, and test motors up to 20,000 hp and 100,000 lbs.

Fully Certified and Capable Facility

Located in Warrior, Alabama, our 84,000 ft² manufacturing facility is certified to ISO 9001:2015, and we work to industry specifications and standards. Our complete motor machine shop with ancillary equipment required to manufacture and test large specialty motors. Our team of specialty electric motor experts has decades of experience - there's nothing we have not seen before!



AE Certified



SAI GLOBAL
ISO 9001
Quality



LOCATION

645 Lester Doss Road
Warrior, AL 35180
USA

MANUFACTURING

54,000 ft²

WAREHOUSING & SHIPPING

30,000 ft²



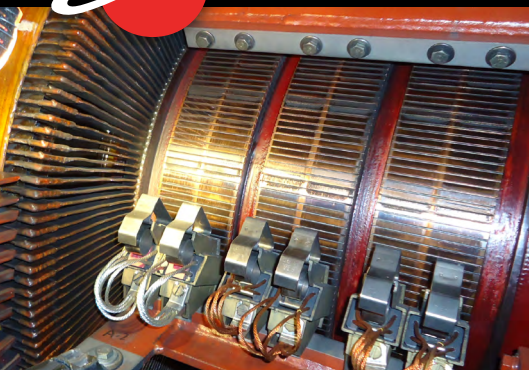
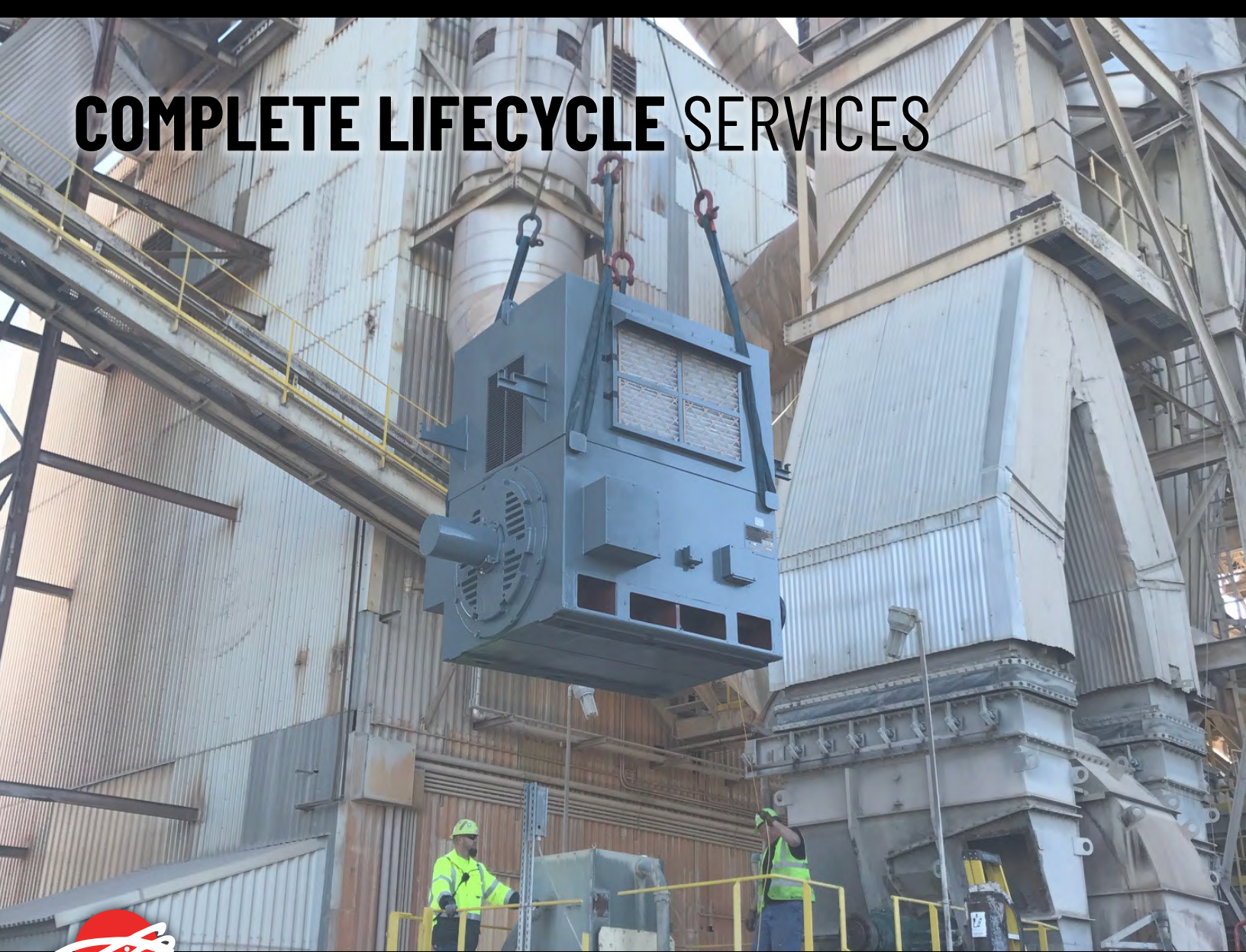
CERTIFICATIONS & STANDARDS

- **Certifications**
 - ISO 9001:2015 Certified
 - UL Hazardous Location - XP
 - MIL-STD-2037 Navy Sealed System Windings
 - PEV
- **Job Specific Standards**
 - CSA/E-SAFE
 - ABS
- **Motor Testing**
 - IEEE-43, IEEE-95, IEEE-112
 - Mil-STD-901D (Shock), Mil-STD-740 (Noise)
- **Manufacturing Repair and Compliance**
 - NEMA Mg1
 - Mil-STD-17060
 - IEEE-841 (Severe Duty), IEEE-45 (Marine)
 - API-541, API-546
 - EASA AR100 - Motor Repair

MANUFACTURING & FABRICATION

- Complete Motor Machining
- CSI Vibration Analysis
- Laser Alignment
- Vacuum Pressure Impregnation (9ft capacity)
- Varnish Dip Tank (7ft capacity)
- Ovens (12-14ft Capacity)
- Balancing (Up To 100,000 lbs)
- DC Power (Up To 700 DC)
- Water Cooled Dynamometer (5000 hp Up To 3600 RPM)
- Crane and Hoist (Up To 100,000 lbs)
- Large Load testing Diesel Generator (Up To 3500 KW)

COMPLETE LIFECYCLE SERVICES



We support your business with engineering, field service, and repairs at our facility or your building, manufacturing plant, in the field or afloat.

Reducing Downtime, Extending Life, and Preventing Loss

We offer field services for your electric motor repair or maintenance needs. Our factory-trained technicians are ready to provide technical assistance when you need it, wherever you are. We can perform service regardless of the original equipment manufacturer or severity of issue. If we cannot repair or maintain your motor in place, we can help remove it, bring it back to full performance at our facility, and then reinstall it with the shortest possible lead time.

If you have an electric motor problem, talk to us, visit our facility, or have our field service team visit your site, and we can demonstrate the long-term benefits of partnering with Louis Allis.



EMERGENCY & OUTAGE SUPPORT

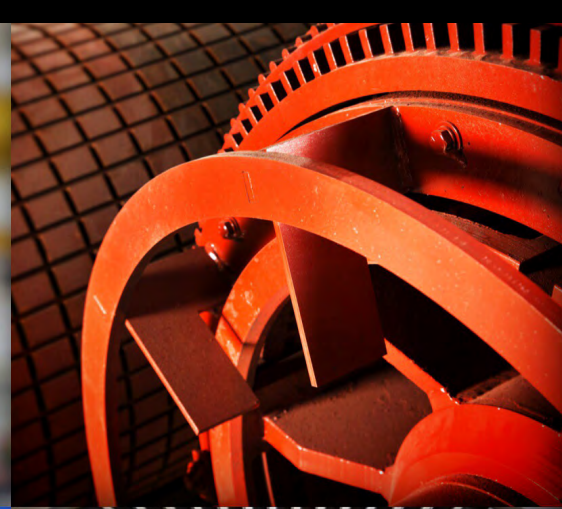
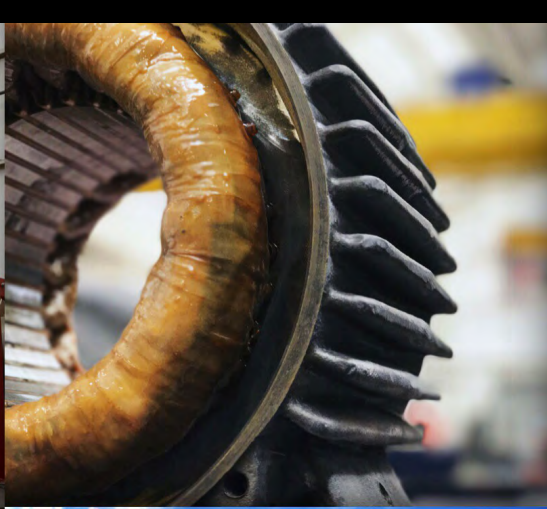
Call 205-590-2986

ENGINEERING

- Re-engineering
- Reverse Engineering
- New Design
- Scope & Statement of Work Development

FIELD SERVICE & REPAIRS

- **Inspections**
 - Bearings, Shafts, Stators, Coils, Brushes, Commutator, Slip Rings, etc.
- **Testing & Diagnostics**
 - Vibration Analysis
 - Infrared Thermography
 - Failure Analysis
 - High HP Load Testing
 - Winding & Insulation Testing
- **Installation & Removal**
- **Repairs, Maintenance & Reconditioning**
 - Laser Alignment
 - Trim and Dynamic Balancing
 - Machining
 - Restacking & Rewinding
 - Stator & Rotors
- **Inventory Control & Monitoring**



Connect with
Louis Allis



645 Lester Doss Road
Warrior, AL 35180
205-590-2986

louisallis.com

