

# Oil Well Pump Motors

## OW & IOW Series

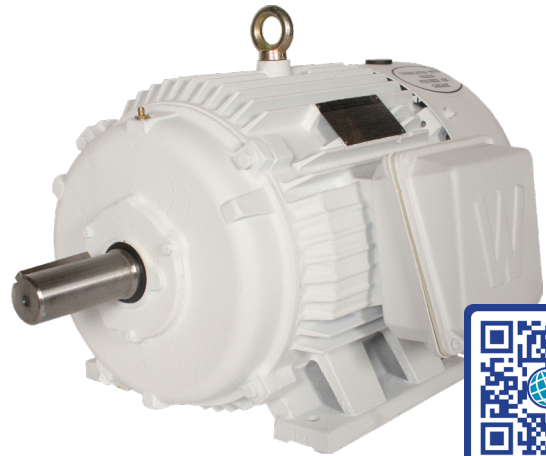
Three-phase motors designed for maximum runtime in harsh environments

The WorldWide Electric Oil Well Pump motors are designed to withstand the harsh environments present in the oil well industry.

**Heavy Duty Performance** — Features include high starting / breakdown torque performance with high slip NEMA Design D and oversized bearings that allow for heavy duty belt drive applications. Roller bearings are supplied on 50 hp motors and above.

**Sized for Your Applications** — They are available with horsepower ratings from 3 to 150 hp and feature a TEFC enclosure and rigid base.

**Built Tough** — Corrosion resistant epoxy paint, a FC200 density cast iron frame with extra deep cooling ribs, and heavy duty reinforced steel fan covers keep the motor in peak operating condition, even if its environment isn't.



### Quick Specs & Features

- Output: 3 - 150 hp
- Speed: 1200 and 900 rpm
- Voltage: 230/460/796 Volts at 60Hz
- Service Factor: 1.15 SF
- Enclosure: Totally Enclosed Fan Cooled (TEFC)
- Ratings: IP55 Protection



#### Responsive

Service & Technical Support



#### Quality Products

Competitive Pricing



#### In Stock Availability

Warehouses Nationwide



#### Fast Shipping

Same-Day Available

## Product Features

- Class F insulation
- Rigid base
- Standard efficiency
- Three winding thermostats provided (one per phase)
- NEMA Design D – high slip 5 - 8%
- F2 Mounting Configuration

## Additional Product for Oil & Gas Applications

In addition to Oil Well Pump motors, WorldWide Electric supplies the oil and gas industry with a selection of electric motors designed to power pump jacks, salt water disposal, progressive cavity pumps, vapor recovery units, and mud pumps as well as variable frequency drives and enclosed drive packages designed to make any operation run more efficiently.

## Model Number Selection

### Sample Part Number: OW3-12-213T.

Each model number contains the product family, horsepower, rpm, voltage, and frame size. Ratings for hp with a decimal will carry a decimal to the model number, i.e. 7.5 hp becomes OW7.5-12-254T. Ratings for rpm are divided by 100.

*‡ Not all combinations indicated by this table are possible. Please contact us or visit [shop.worldwideelectric.com](http://shop.worldwideelectric.com) for more information on availability.*

*<sup>1</sup>R indicates the presence of a roller bearing on drive end for belted applications*

	HP	RPM	Frame	Notes <sup>1</sup>
OW/IOW	3	900	213T	
	5	1200	215T	
	7.5		254T	
	10		256T	
	15		284T	
	20		286T	
	25		324T	
	30		326T	
	40		365T	
	50		404T	R
	60		405T	R
	75		444T	R
	100		445T	R
	125		447T	R
	150		449T	R



WorldWide Electric Corporation is a leading manufacturer of electric motors, motor controls, gear reducers, and generators. Offering fast, often same-day, shipping from seven regional US warehouses, WorldWide Electric takes pride in providing a competitive edge to our customers by responding to their requirements with urgency, technical expertise, and professionalism.

© Copyright 2023 WorldWide Electric Corporation

EM-Oil-Well-Pump-v06-06-23