

# Stainless Steel - Fractional HP Motors

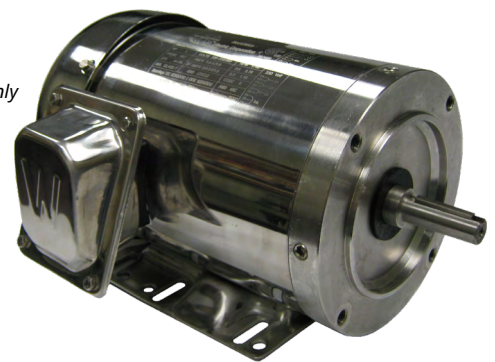
## NAWSS Series

Three-phase, TEFC and TENV motors offer IP56 water-tight protection for wash-down applications

WorldWide Electric Stainless Steel Fractional horsepower motors are available in C-Face with feet or round body configurations. These wash-down duty motors are ideal for conveyors, pumps, and material handling applications in the food and beverage, pharmaceutical, and poultry industries.

**NEMA**  
**Premium**

*\*NAWSSE Series Only*



### Quick Specs & Features

- Output:  $\frac{3}{4}$  - 2 hp
- Speed: 1800 rpm
- Voltage: 230/460 Volts at 60Hz
- Service Factor: 1.15 SF
- Protection: IP56
- Class F insulation



**Responsive**  
Service & Technical Support



**Quality Products**  
Competitive Pricing



**In Stock Availability**  
Warehouses Nationwide



**Fast Shipping**  
Same-Day Available

## Product Features

- Totally Enclosed Fan Cooled (TEFC) enclosure, C-Face with feet (welded on)
- 1/2 to 2 hp, 3600 and 1800 rpm
- 304 stainless steel frame, end bracket and junction box
- Stainless steel shaft
- Anti-rust Film Applied to Rotor
- Double lip seals with an additional shaft slinger on the Drive-end
- O-Ring installed on endbells to prevent moisture intrusion
- Stainless steel cord connector included
- Inverter duty
- Premium efficient (1-2 hp NAWSSE series)

## Additional Stainless Steel Wash-down Duty Motors

WorldWide offer Premium efficient, Stainless Steel Motors, IP69K rated, BISSC/BEAG certified motors that offer protection against close-range, high-pressure, high-temperature spray downs. Call us or visit [worldwideelectric.com](http://worldwideelectric.com) to find a motor that meets your needs.



## Model Number Selection

### Sample Part Number: NAWSS34-18-56C

Each model number contains the product family, horsepower, rpm, and frame size. Ratings for hp with a decimal will carry a decimal to the model number, i.e. 1.5 hp becomes NAWSSE1.5-18-56C. Ratings for hp listed in fractions will drop the slash, i.e. 1/2 hp becomes NAWSS12-18-56CRD. Ratings for rpm are divided by 100.

*‡ Not all combinations indicated by this table are possible. Please contact us or visit [shop.worldwideelectric.com](http://shop.worldwideelectric.com) for more information on availability.*

Product Family	HP	RPM	Frame Size	Frame Suffix
NAWSS	1/2	3600	56	C
	3/4	1800		CRD
NAWSSE Premium Efficient	1			
	1.5			
	2			

## Additional Fractional HP Motors

WorldWide has a full line of fractional motors to satisfy any application. Call us or visit [worldwideelectric.com](http://worldwideelectric.com) to find a motor that meets your needs.

 <p><b>Jet Pump Motors</b> 1/3 – 5 hp, 3600 rpm. ODP/TEFC Enclosures</p>	 <p><b>General Purpose Motors</b> 1/3 – 3 hp, 3600, 1800 rpm. TEFC Enclosure</p>	 <p><b>Permanent Magnet DC Motors</b> 1/4 – 2 hp, 1800 rpm. TEFC &amp; TENV Enclosure</p>	 <p><b>Farm Duty Motors</b> 1/3 – 2 hp, 1800 rpm. TEFC Enclosure</p>	 <p><b>Open Drip Proof Motors</b> 1/3 – 3/4 hp, 3600 &amp; 1800 rpm. ODP Enclosure</p>
---	---	--	--	---



WorldWide Electric Corporation is a leading manufacturer of electric motors, motor controls, gear reducers, and generators. Offering fast, often same-day, shipping from seven regional US warehouses, WorldWide Electric takes pride in providing a competitive edge to our customers by responding to their requirements with urgency, technical expertise, and professionalism.

© Copyright 2023 WorldWide Electric Corporation

EM - Stainless-Fractional-v06-06-23