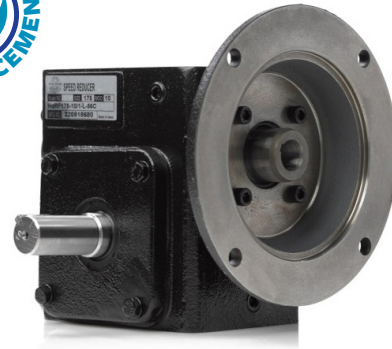


# Cast Iron Worm Gear Reducers

- Universal interchangeability with the Boston Gear® 700 series and other equivalent brand
- Flexible input and output configurations — support your installed base
- Solid, one-piece heavy-duty construction
- Speed ratio: 5:1 - 60:1
- Center distance: 1.33 - 3.25 inches
- Input compatibility: 56C, 145TC, 182/4TC
- One-year warranty



## Construction

- Flange and Shaft Input Option.
- Shaft and Hollow Bore Output Options.
- One-piece FC-20 heavy-duty cast iron housing.
- Embedded, double-lipped seals on shafts and hubs keep oil in and contaminants out.
- Two sets of heavy duty tapered roller bearings per input shaft for strength and reliability.
- S45C Carbon Steel Shafts for durability.
- Aluminum-bronze alloy machined output gears for improved strength.
- Brass Spring Loaded Breather Plug
- Pre-Filled with Mobil Synthetic SHC632.\*

## Model Number Selection†

Example: **HDRF133-10/1-L-56C**

Product Family	Box Size	Ratio	Output Type	Motor Frame
HDRF	133	5:1	L: Left Hand	56C
HDRS	154	10:1	R: Right Hand	145TC
	175	15:1	DE: Double End	182/4TC
	206	20:1	H: Hollow Bore	
	237	30:1		
	262	40:1		
	325	50:1		
		60:1		

† Not all combinations indicated by the table(s) may be possible.  
\* Addition or subtraction of oil may be required for other mounting positions.

## Available Configurations



Flange Input  
Shaft Output  
Left Hand Output



Flange Input  
Shaft Output  
Right Hand Output



Flange Input  
Shaft Output  
Double End Output



Flange Input  
Hollow Bore Output



Shaft Input  
Shaft Output  
Left Hand Output



Shaft Input  
Shaft Output  
Right Hand Output



**Responsive**  
Service & Technical Support



**In Stock Availability**  
Nationwide Distribution



**Quality Products**  
Competitive Pricing



**Fast Shipping**  
Same-Day Available

Distribution Centers in Atlanta (GA), Dallas (TX), Hernando (MS), Indianapolis (IN), Milton (PA), Rancho Cucamonga (CA), Warrior (AL)

