

Smart Interface Devices

An Essential Addition to WorldWide's Variable Frequency Drive Enclosed Packages

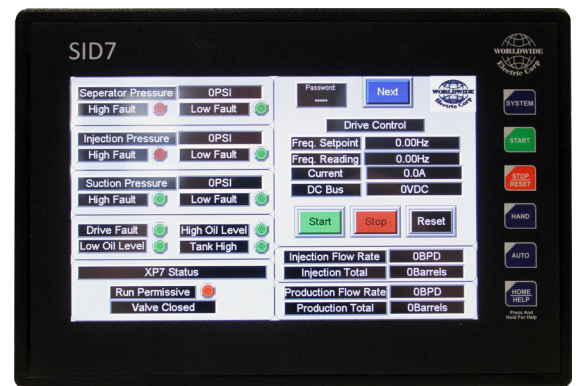
These Smart Interface Devices are delivered preprogrammed for pump skid control, vapor recovery and pump jack control applications. Smart IO can be added allowing these Smart Interface Devices to be used on small and large vapor recovery applications. Years of development and field experience went into developing these programs ensuring they perform flawlessly when implemented in the field. They also provide access to all drive parameters and several network communication protocols making them an essential addition to any of the WorldWide VFD cabinet builds!

Quick Specs

- Soft Pipe Fill / Pipe Brake Detection
- Sleep / Wake Mode
- Hi / Low Pressure Fault
- Multiple Pump / Lead Lag Control
- Real Time Clock / Data Logging
- Suction Filter Monitoring
- Energy Savings Mode / Over Pressure Mode
- PID Control



SID1



SID7



Responsive
Service & Technical Support



Quality Products
Competitive Pricing



In Stock Availability
Warehouses Nationwide



Fast Shipping
Same-Day Available

Product Features



SID 7 CONTROLLER

CPU	Single Core Arm
Logic Scan Rate	0.013 ms/KB
Built-In Storage	128MB
Removable Memory	microSD
Retentive Storage	256KB
Programming Languages	Advanced Ladder or IEC: ST, LD, FBD, IL, SFC
USER INTERFACE	
Display Technology	7" TFT, 800 cd/m ²
Resolution / Color	800 x 480
Keypad	6 Function Keys
CONNECTIVITY	
Serial Ports	1 with RS-232 and RS-485 on first Modular Jack (M1/2) 1 RS-232 or 1 RS 485 on second Modular Jack (MJ-3)
USB Ports (A and Mini-B)	1 Host, 1 Programming
Ethernet	Dual 10/100 Support with Auto MDIX Support
CAN	2 CAN Ports 125KB - 1MB



SID 1 CONTROLLER

CPU	High Performance 32 Bit Arm with DSP and FPU Acceleration
Logic Scan Rate	0.7 ms/KB
Built-In Storage	16MB
Removable Memory	32GB microSD
Retentive Storage	32KB Battery-Backed Ram
Programming Languages	Advanced Ladder or IEC: ST, LD, FBD, IL, SFC
USER INTERFACE	
Display Technology	2.2" Transflective LCD
Resolution / Color	128 x 64, Monochrome
Keypad	20 Key Domed Membrane
CONNECTIVITY	
Serial Ports	2 Ports with RS-232 and RS-485
USB Ports (Mini-B)	1 Programming
Ethernet	10/100 Support with Auto MDIX Support (optional)
CAN	1 Port 125KB - 1MB



WorldWide Electric Corporation is a leading manufacturer of electric motors, motor controls, gear reducers, and generators. Offering fast, often same-day, shipping from seven regional US warehouses, WorldWide Electric takes pride in providing a competitive edge to our customers by responding to their requirements with urgency, technical expertise, and professionalism.

© Copyright 2022 WorldWide Electric Corporation

VFD-SID-v002-01-2023