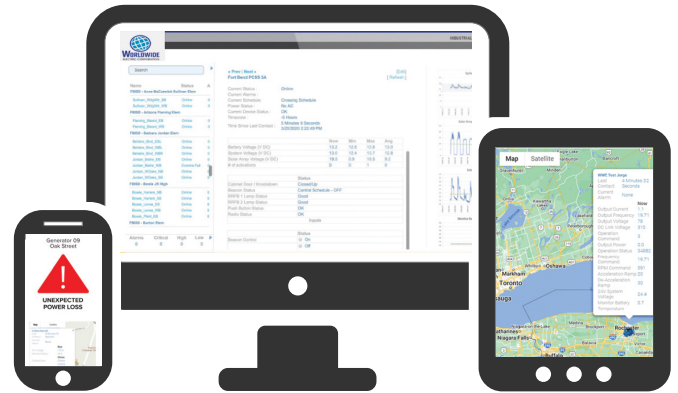


ROM 1

Remote Monitoring and Control for Variable Frequency Drives (VFD) and Soft Starter control units already installed in the field.



WorldWide Electric's ROM 1 allows you to reduce your time spent in the field to check up on your operations by providing information at your fingertips. A simple add-on to your existing equipment, the ROM 1 will enable you to view system statuses in real-time, view automatically-generated reports, and get notified of critical issues via email and text alerts 24/7.

As a control device, you can immediately power up or down your equipment from your mobile phone anywhere you have service. It provides additional control* inputs and outputs, to connect and monitor other devices, such as pressure, temperature, or flow. The ROM 1 is cloud-based, straightforward to set up and operate, and WorldWide Electric's Technical Support team has your back - helping you step-by-step.



ROM 1
Unit

*Depending on the Variable Frequency Drive or Soft Start Model connected.

**Continuous service depends on 4G cellular reception.

Quick Specs

- Cloud-based 24/7, real-time monitoring with alerts
- Unlimited Technical Support
- 4G Cellular Connectivity**
- Configurable Inputs and Outputs*
- Three-Year monitoring included
- Renewable plans are available.



Responsive
Service & Technical Support



Quality Products
Competitive Pricing



In Stock Availability
Warehouses Nationwide



Fast Shipping
Same-Day Available

Product Features

- Ease of Use
 - Easy to Install
 - Small footprint
 - DIN-rail Mounted
 - Standard Industrial IO Connections
 - Simple Online Setup from your Phone
 - Cloud-based Software Application
- Easy to Maintain
 - Automated Software Updates
 - Unlimited Technical Support
 - Renewable 3-Year Plan
- Monitoring and Control Features
 - Automated Reports
 - Real-time Alerts
 - Location Tracking
 - "Last-Gasp" Battery for Loss-of-Power Alert
 - Industrial IO for Start/Stop Control, PID Control, Logic Tables and VFD, or Soft Starter Control



Included Connectivity	
Cell Modem	4G Cat M1
GPS	Yes
OTA Software Update	Yes

Industrial I/O	Operation	
Analog Inputs (Voltage 0-30 VDC)		3
Analog Inputs (Voltage 4-20mA)		3
Analog Inputs (Voltage 0-280 VAC)		1
Digital Outputs (Open Collector)	Start/Stop Control	1
Digital Inputs (Voltage 3-30 VDC) / Pulse	Alarm Status	4
Analog Outputs (Current 4-20 mA)	Frequency Control	1
RS485 Port		MODBUS™

Miscellaneous	
Control Capability	PID Control/Logic Table/VFD or Soft Start Control
Non-volatile Memory	Yes
Operating Temperature	-37°C to 74°C
Humidity	5-95% Non-Condensing
Dimensions	1" x 2.375" x 45"
Input Voltage	10-30V DC
Power Consumption DC	< 20mA @ 12VDC

Additional Product Notes

Use of ROM1 with our WSIQ products using Modbus™ protocol will require the purchase and installation of the Modbus RTU communication card, model # WSIQ-COM-MB or WSIQ-COM-MB2 found in the Motor Control Catalog.



WorldWide Electric Corporation is a leading manufacturer of electric motors, motor controls, gear reducers, and generators. Offering fast, often same-day, shipping from seven regional US warehouses, WorldWide Electric takes pride in providing a competitive edge to our customers by responding to their requirements with urgency, technical expertise, and professionalism.

© Copyright 2023 WorldWide Electric Corporation

ROM1-v01-26-23