

DATA SHEET

Premium Efficiency Motor: **NATJE1.5-36-56JB**

60 Hz

WorldWide Electric Corporation

1 (800) 808-2131

Worldwideelectric.net



Document Generated: 28-Feb-2023

Document ID:

Customer:

MOTOR INFORMATION

HP	1-1/2
RPM	3600
Phase	3
Frequency	60 Hz
Voltage	230/460
Frame Size	56J
Enclosure	TEFC
Degree of Protection	IP43
Service Factor	1.15
Poles	4
Full Load Speed	3500
Insulation Class	F
Temp Rise	80°C
NEMA Code Letter	H
Duty Cycle	S1 / Continuous
Slip	0.02%
NEMA Design	B
Moment of Inertia	0.0473 lb.ft.^2
Sound Pressure Level	73 dB(A)
Max Ambient Temperature	40°C
Max Elevation	1000 m.a.s.l (3300 f.a.s.l)
Mounting	F1
Base	C-Face Removable Base
Rotation	Clockwise
Standard	NEMA MG-1
Approvals	CSA, CE

EFFICIENCY/POWER FACTOR

LOAD	EFF	P. F.
100%	85.9 %	80.9
75%	84.7 %	73.5
50%	81.6 %	60.7

TORQUE

FULL LOAD	LRT	BDT
2.21 lb.ft.	495 %	600 %

AMPERAGE INFORMATION

	230V	460V
Full Load Amps	3.96	1.98
Locked Rotor Amps	50.2	25.1
No Load Current	2.16	1.08
Usable at 208V	4	

BEARING INFORMATION

DE Bearing	6203 2RS
ODE Bearing	6203 2RS

ADDITIONAL DATA

F2 Suitable	No
Shaft Material	AISI 420 Stainless
Connection Diagram	230 / 460 V - 9 Lead Y
Approximate Weight	30.5 lbs.

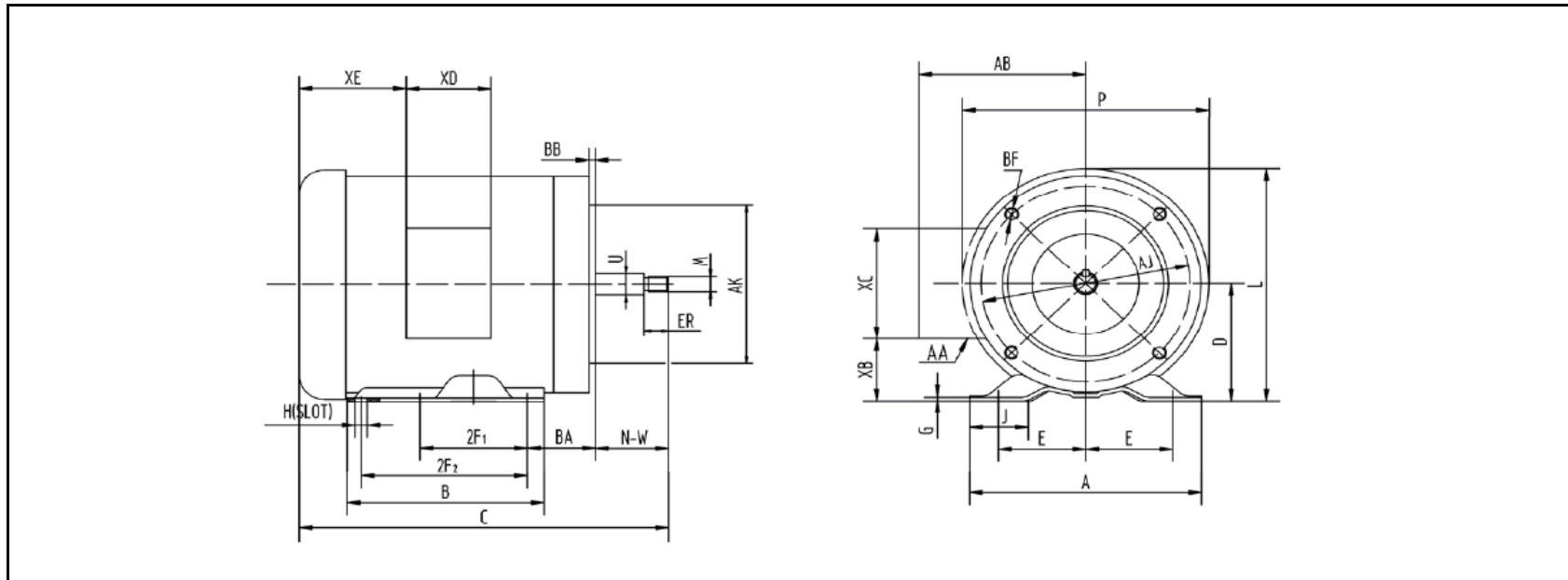
MOTOR DRAWING

Premium Efficiency Motor: **NATJE1.5-36-56JB**

WorldWide Electric Corporation

1 (800) 808-2131

Worldwideelectric.net



DIMENSION - INCHES

MOUNTING					A	B	C	D	G	J	L	P	AB
E	2F1	2F2	H	BA									
2.44	3	5	0.34	2.75	6.54	6.54	12.4	3.5	0.12	1.65	7.4	7.3	5.2

SHAFT & KEY			
ES	R	N-W	U
0.68	7/16-20	2.44	0.625

TERMINAL BOX				
AA	XB	XC	XD	XE
1/2 & 3/4	1.65	3.7	3.2	2.15

FLANGE				
AK	AJ	BF	BB	BC
4.5	5.875	3/8-16	0.16	-0.19

PERFORMANCE CURVES

WorldWide Electric Corporation

1 (800) 808-2131

Worldwideelectric.net



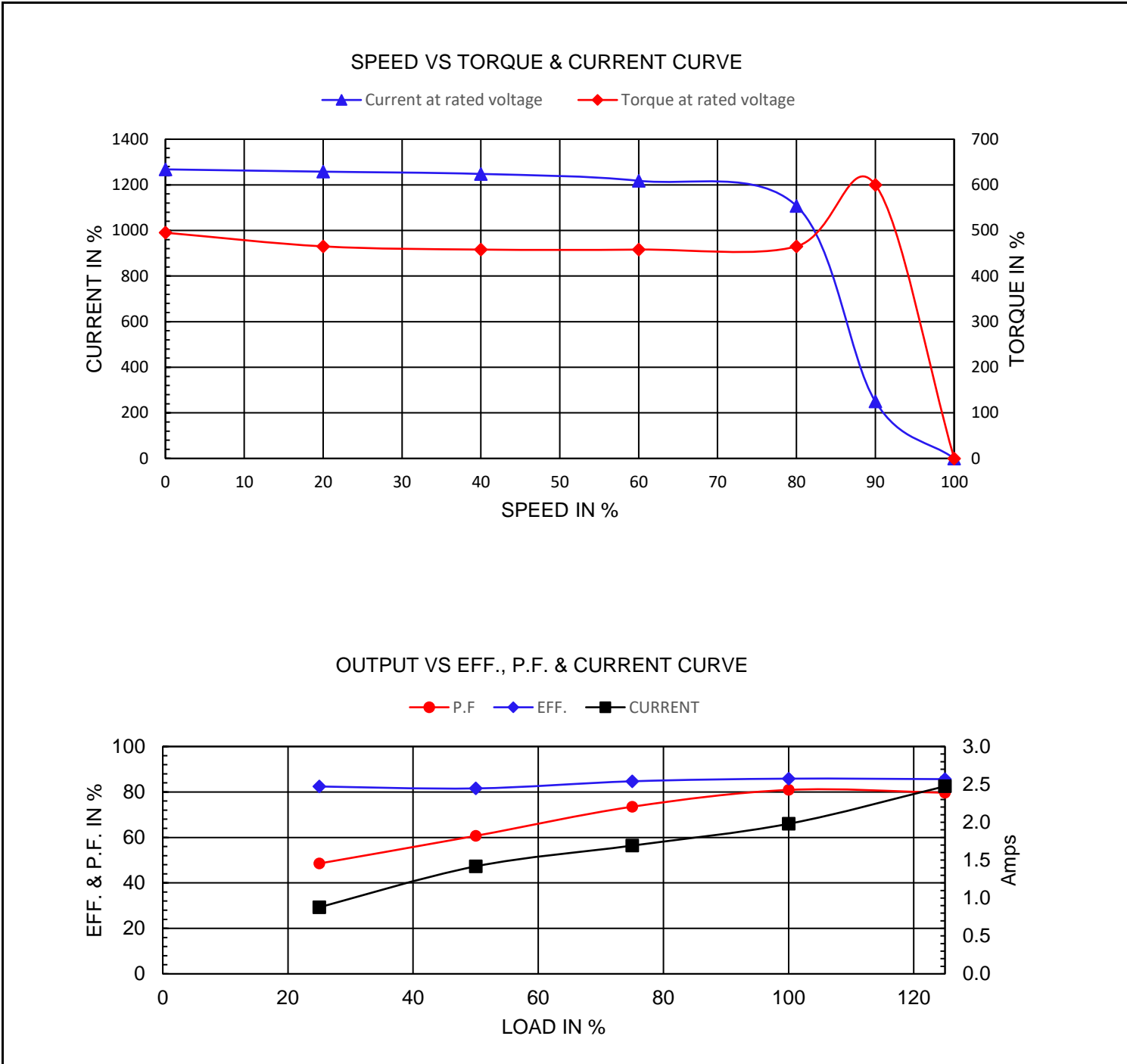
Premium Efficiency Motor:

NATJE1.5-36-56JB

Document Generated: 28-Feb-2023
Document ID:

Customer:

Motor Type					
Output Rating (HP)	1-1/2		FL Speed	3500	
Full Load Torque	2.21 lb.ft		LRT (%FLT)	495	460 volt FLA 1.98
Rotor Wk ²	0.0473 lb-ft ²		BDT (%FLT)	600	230 volt FLA 3.96



NAMEPLATE / WIRING

Premium Efficiency Motor: **NATJE1.5-36-56JB**

WorldWide Electric Corporation

1 (800) 808-2131

Worldwideelectric.net



Document Generated: 28-Feb-2023	Customer:
Document ID:	

SAMPLE NAMEPLATE DATA

		INDUSTRIAL DUTY FRACTIONAL MOTOR				
MODEL	FRAME	LOW VOLTAGE		HIGH VOLTAGE		
Hz	ENCL.	BLUE (T1) — LINE2		BLUE (T1) — LINE2		MADE IN CHINA
HP	PH	BROWN (T7) — LINE2		WHITE (T2) — LINE1		
RPM	DUTY	WHITE (T2) — LINE1		ORANGE (T3) — LINE3		
VOLTS	CODE	RED (T8) — LINE1		YELLOW (T4) — INS		
AMPS	INS.	ORANGE (T3) — LINE3		BROWN (T7) — INS		
S. F.	DES.	YEL/BLA (T9) — LINE3		BLACK (T5) — INS		
NOM. EFF	% (60Hz)	YELLOW (T4) — INS		RED (T8) — INS		
DE/ODE BRG.		BLACK (T5) — INS		GRAY (T6) — INS		
MAX. AMB.	LB/WT	GRAY (T6) — INS		YEL/BLA (T9) — INS		
Date Code XX/XXXX		ACCEPTABLE FOR FIELD WIRING THERMALLY PROTECTED : NONE				
SERIAL NO. XXXXXXXXXX		WorldWide Electric Corporation				

Model	NATJE1.5-36-56JB	Frame	56J
Hz	60 Hz	Encl	TEFC
HP	1-1/2	PH	3
RPM	3500	DUTY	CONT
Voltage	230/460	Code	H
Amps	3.96/1.98	Ins Cl	F
S.F.	1.15	Design	B
SFA.	--	LB/WT	30.5 lbs.
Nom.Eff.	85.9%	DE Brng	6203 2RS
IP	IP43	ODE Brng	6203 2RS
MAX. AMB	40°C		