

DATA SHEET

Premium Efficiency Motor: **PEWWE200-12-505UZ**

60 Hz

WorldWide Electric Corporation

1 (800) 808-2131

Worldwideelectric.net



Document Generated: 31-Jul-2023

Document ID:

Customer:

MOTOR INFORMATION

HP	200
RPM	1200
Phase	3
Frequency	60 Hz
Voltage	230/460 V
Frame Size	505UZ
Enclosure	TEFC
Degree of Protection	IP55
Service Factor	1.25
Poles	6
Full Load Speed	1190
Insulation Class	F
Temp Rise	80°C
NEMA Code Letter	G
Duty Cycle	S1 / Continuous
Slip	0.83%
NEMA Design	B
Moment of Inertia	105 lb.ft.^2
Locked Rotor Time (Hot)	14 seconds
Sound Pressure Level	72 dB(A)
Number of Starts	2 Cold/ 1 Hot
Max Ambient Temperature	40°C
Max Elevation	1000 m.a.s.l (3300 f.a.s.l)
Mounting	F1
Rotation	Bi-Directional
Area of Classification	Class 1 Division 2 Groups A,B,C,D T3(200°C)
Inverter Rating	10:1 CT / 20:1 VT PWM Type
Standard	NEMA MG-1
Approvals	CSA-US, CE

EFFICIENCY/POWER FACTOR

LOAD	EFF	P. F.
100%	95.8 %	0.87
75%	96.0 %	0.85
50%	95.9 %	0.77

TORQUE

FULL LOAD	LRT	BDT
882 lb.ft.	190 %	250 %

AMPERAGE INFORMATION

	230V	460V
Full Load Amps	449A	225A
Locked Rotor Amps	2900A	1450A
No Load Current	140A	70A
Usable at 208V	--A	

BEARING INFORMATION

DE Bearing	NU322
ODE Bearing	6319 C3
Grease Type	SKF LGHP 2
DE Regreasing Interval	2000 Hours
ODE Regreasing Interval	3000 Hours

ADDITIONAL DATA

F2 Suitable	No
Shaft Material	4140 Carbon Steel
Connection Diagram	460 V - 12 Lead ΔΔ/Δ
Approximate Weight	2470 lbs.

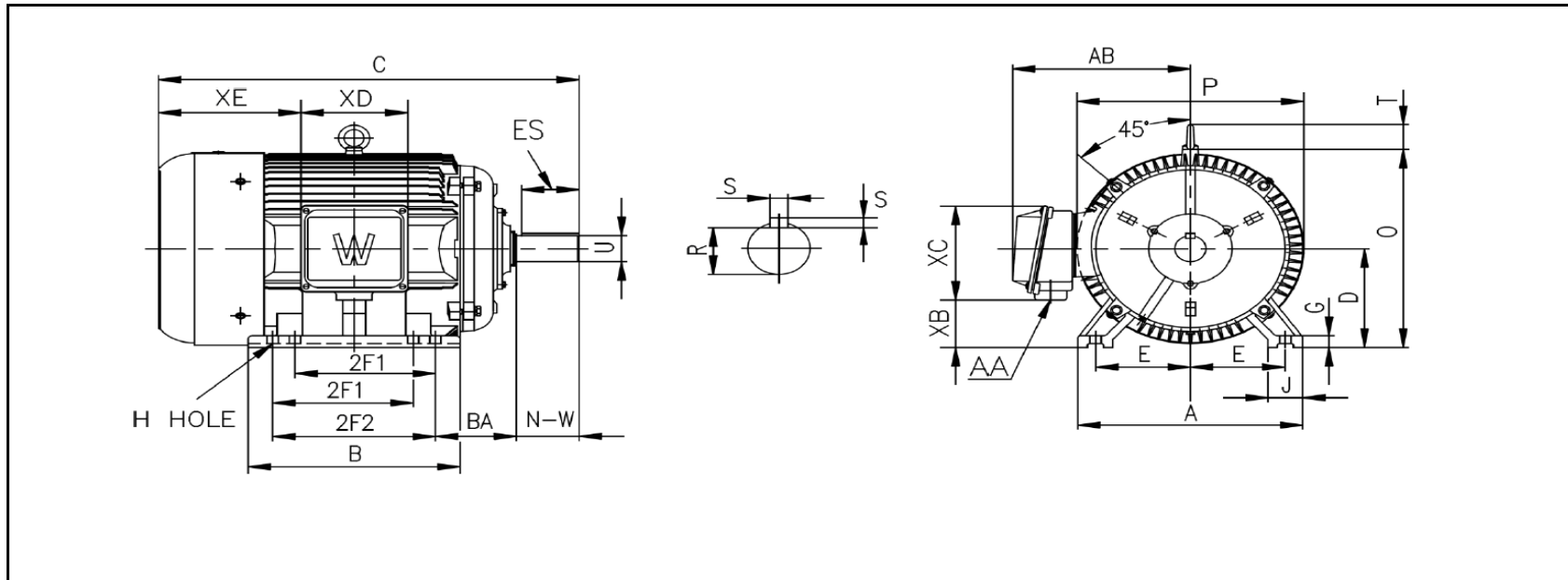
MOTOR DRAWING

Premium Efficiency Motor: **PEWWE200-12-505UZ**

WorldWide Electric Corporation

1 (800) 808-2131

Worldwideelectric.net



DIMENSION - INCHES

MOUNTING					A	B	C	D	G	J	P	O	T	AB
E	2F1	2F	H	BA										
10	16	18	0.94	8.5	24.72	26	55	12.5	1.87	4.72	25	25.3	4.25	21

SHAFT & KEY				
S	ES	R	N-W	U
1	10	3.309	11.625	3.875

TERMINAL BOX				
AA	XB	XC	XD	XF
2X3	5	13.8	11.8	--

PERFORMANCE CURVES

WorldWide Electric Corporation

1 (800) 808-2131

Worldwideelectric.net



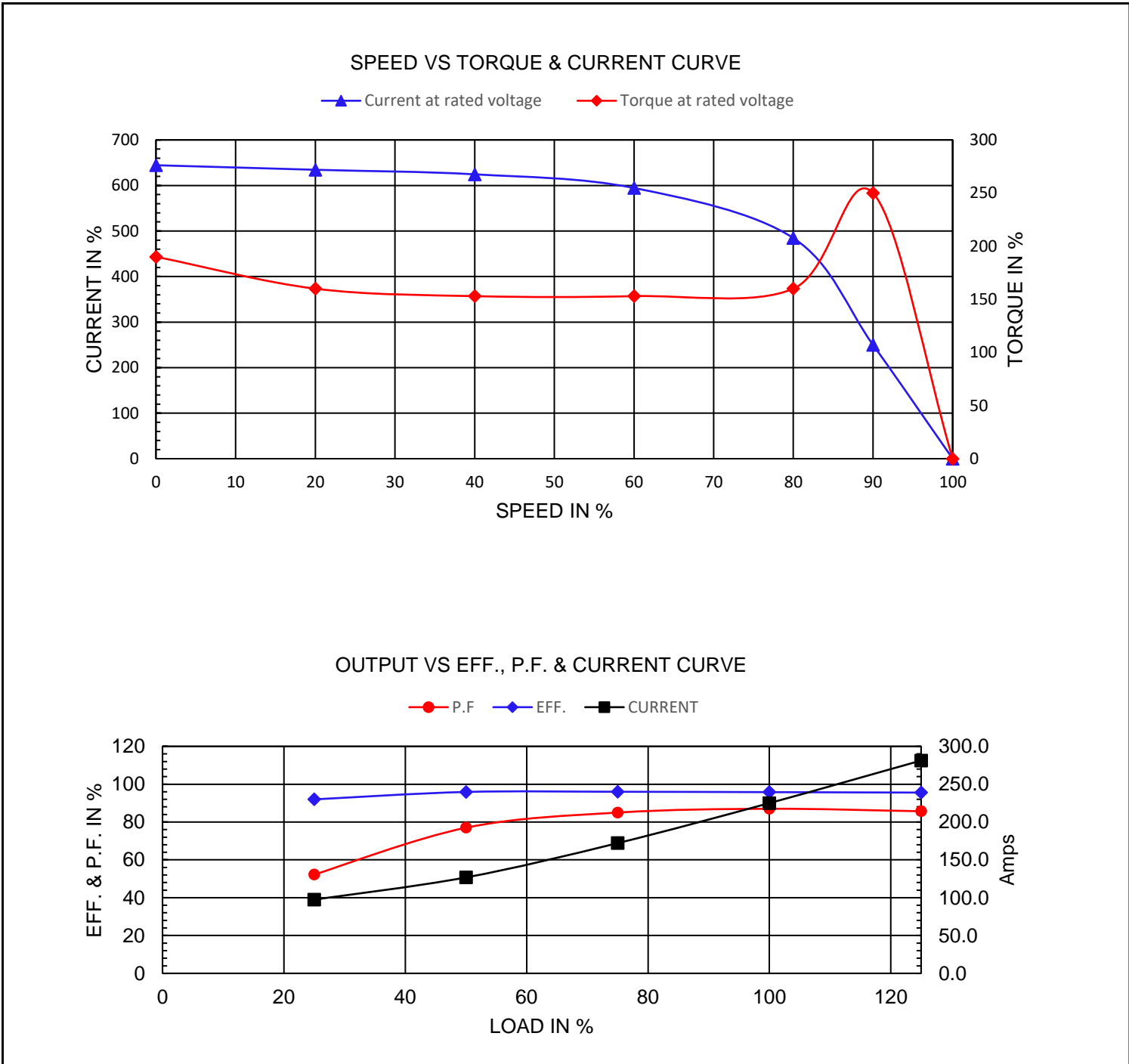
Premium Efficiency Motor:

PEWWE200-12-505UZ

Document Generated: 31-Jul-2023
 Document ID:

Customer:

Motor Type	PEWWE				
Output Rating (HP)	200	FL Speed	1190		
Full Load Torque	882 lb.ft	LRT (%FLT)	190	460 volt FLA	225 A
Rotor Wk^2	105 lb-ft^2	BDT (%FLT)	250	230 volt FLA	449 A



NAMEPLATE / WIRING

WorldWide Electric Corporation

1 (800) 808-2131

Worldwideelectric.net



Premium Efficiency Motor:

PEWWE200-12-505UZ

Document Generated: 31-Jul-2023
Document ID:

Customer:

SAMPLE NAMEPLATE DATA

				3-PHASE INDUCTION MOTOR		259277 	 CC006A
Model		Ser No.					
HP		S.F.		IP		Encl	
Frame		P.F.		Code		Type	
Voltage	230/460	Hz		Ins Cl		Rating	°C Amb Cont
Amps		RPM		Design		Date	
Nom.Eff.	FL	% 3/4	% 230/460V	10:1 CT	20:1 VT	PWM	VFD 1.0SF
Class I DIV. 2 Groups A B C D			Amb.40°C	DE Brng			
Class I Zone 2 IIC			Amb.55°C	ODE Brng			
				Grease type: LGHP 2 (compatible with polyrex)			
50Hz		HP	V	A	rpm	1.0SF	
WorldWide Electric Corporation							

Model	PEWWE200-12-505UZ						
HP	200	S.F.	1.25	IP	IP55	Encl	TEFC
Frame	505UZ	P.F.	0.87	Code	G	Type	
Voltage	230/460 V	Hz	60 Hz	Ins Cl	F	Ambient	40°C
Amps	449/225	RPM	1190	Design	B	DE Brng NU322	
Nom.Eff.	FL	95.8%	3/4	96.0%	ODE Brng 6319 C3		
Class 1 Division 2 Groups A,B,C,D					T3(200°C)		
					Grease type: SKF LGHP 2		
50Hz	200 HP	200/400 V	522/261	A	990 rpm		