

# Parallel Shaft Helical Gear Reducers

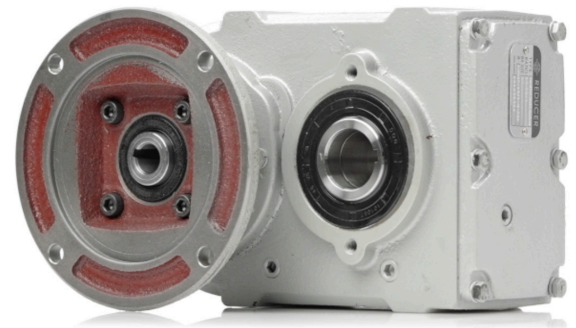
## FHN Series - Integrated Power Lock Models Available

Universal compatibility with NEMA C-face motors, a hollow bore output, and a broad range of power and output torques support many industrial process applications.

The WorldWide Electric FHN Parallel Shaft Helical Speed Reducers reduce output speed (RPM) and increase torque. The helical gear design provides high efficiency for your applications, such as driving belt, screw and chain conveyors, presses, extruders, and gantry cranes.

**Modular Design, Simplified Retrofitting** — The NEMA quill input design allows you to replace a motor or gear reducer separately if either fails. The modular design allows drop-in replacement for most European-produced parallel speed reducers. The hollow bore allows direct connection to the shaft so a coupling is not required.

**Efficient, Strong, and Low Noise** — All housings are cast iron for increased strength and reliability. Precision machined, 20rMo alloy steel gears reduce stress and corrosion while providing efficient rotation and quieter operation. Heat-treated pinions and shafts provide durability.



**Power Lock Benefits** — The power lock provides a more secure connection, removes the need for key alignment, reduces seizing and simplifies installation and removal.

## Quick Specs & Features

- Ratios: 4:1 – 110:1 | Power Lock 7:1 – 110:1
- Box Sizes: 37 – 97 | Power Lock 87 – 97
- HP Range: ¼ hp to 25 hp | Power Lock ¾ hp to 25 hp
- Housing: FCD45 Cast Iron
- Two-year Warranty



### Responsive

Service & Technical Support



### Quality Products

Competitive Pricing



### In Stock Availability

Warehouses Nationwide



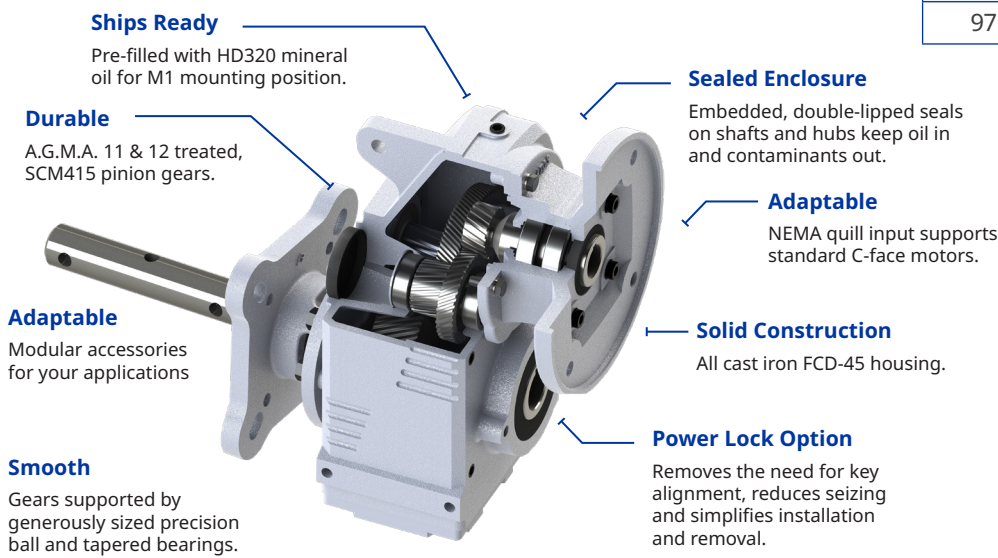
### Fast Shipping

Same-Day Available

## Product Features

- All cast iron housing for unquestioned strength and reliability
- Precision machined gears for quieter operation and superior strength
- Flanges designed to accept NEMA C-face motors
- Drop-in compatibility with most major European-produced reducer brands
- Embedded, double-lipped seals on shafts and hubs keep oil in and contaminants out.
- Pre-filled with HD320 Mineral Oil for M1 mounting position
- Power lock bushing include on Power Lock Models

## Product Overview



## Model Number Selection

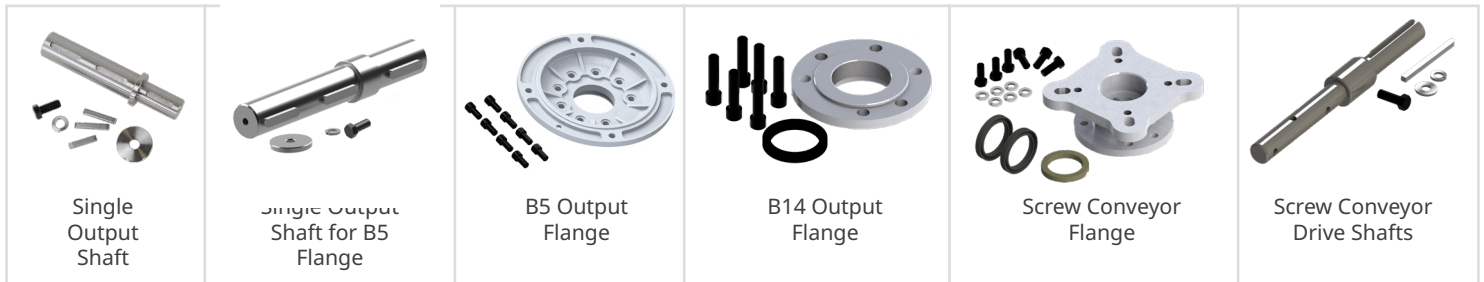
### Sample Part Number: FHN87-45/1-182T/4TC-PL

Each model number contains the product family, box size, nominal ratio, motor frame, and power lock. When selecting ratio, replace colon with slash, e.g. 10:1 becomes 10/1.

‡ Not all combinations indicated by this table are possible. Please contact us or visit [shop.worldwideelectric.com](http://shop.worldwideelectric.com) for more information on availability.

Product Family	Box Size	Nominal Ratio	Motor Frame	Power Lock
FHN	37	5:1	56C	PL
	47	6:1	143TC	
	57	7:1	143/5TC	
	67	7.5:1	145TC	
	77	10:1	182TC	
	87	15:1	182/4TC	
	97	20:1	213TC	
		30:1	213/5TC	
		40:1	254TC	
		45:1	254/6TC	
		50:1	284TC	
		60:1	284/6TC	
		65:1		
		70:1		
		80:1		
		85:1		
		90:1		
		95:1		
		100:1		
		110:1		

## Output Options and Accessories



WorldWide Electric Corporation is a leading manufacturer of electric motors, motor controls, gear reducers, and generators. Offering fast, often same-day, shipping from seven regional US warehouses, WorldWide Electric takes pride in providing a competitive edge to our customers by responding to their requirements with urgency, technical expertise, and professionalism.

© Copyright 2023 WorldWide Electric Corporation

GR-FHN-v05-06-24