

# DATA SHEET

Premium Efficiency Motor: **LAM1.5-18-145T**

**60 Hz**

WorldWide Electric Corporation

1 (800) 808-2131

Worldwideelectric.net



Document Generated: 8-Sep-2023  
Document ID:

Customer:

MOTOR INFORMATION	
HP	1.5
RPM	1800
Phase	3
Frequency	60 Hz
Voltage	230/460
Frame Size	143/5T
Enclosure	TEFC
Degree of Protection	IP55
Service Factor	1.25
Poles	4
Full Load Speed	1730
Insulation Class	F
Temp Rise	80°C
NEMA Code Letter	L
Duty Cycle	S1 / Continuous
Slip	3.89%
NEMA Design	B
Moment of Inertia	0.0866765402843602 lb.ft.^2
Locked Rotor Time (Hot)	12 seconds
Sound Pressure Level	70 dB(A)
Number of Starts	2 Cold/1 Hot
Max Ambient Temperature	40°C
Max Elevation	1000 m.a.s.l (3300 f.a.s.l)
Mounting	Rigid
Rotation	Bi-Directional
Area of Classification	Class 1 Division 2 Groups A,B,C,D T3B
Inverter Rating	10:1 CT / 20:1 VT
Standard	NEMA MG-1
Approvals	UL, CE, IEEE45, ABS

EFFICIENCY/POWER FACTOR		
LOAD	EFF	P. F.
100%	86.5 %	0.75
75%	86.8 %	0.67
50%	85.2 %	0.54

TORQUE		
FULL LOAD	LRT	BDT
4.44 lb.ft.	360 %	395 %

AMPERAGE INFORMATION		
	230V	460V
Full Load Amps	4.2A	2.1A
Locked Rotor Amps	35A	17.5A
No Load Current	2.4A	1.2A
Usable at 208V		4.6 A

BEARING INFORMATION	
DE Bearing	6205 ZZ
ODE Bearing	6204 ZZ
Grease Type	NSK SN7
DE Regreasing Interval	-- Hours
ODE Regreasing Interval	-- Hours
Grease Quantity	--

ADDITIONAL DATA	
F2 Suitable	Yes
Shaft Material	AISI 1045
Connection Diagram	9 Lead Wye
Approximate Weight	55.1 lbs.

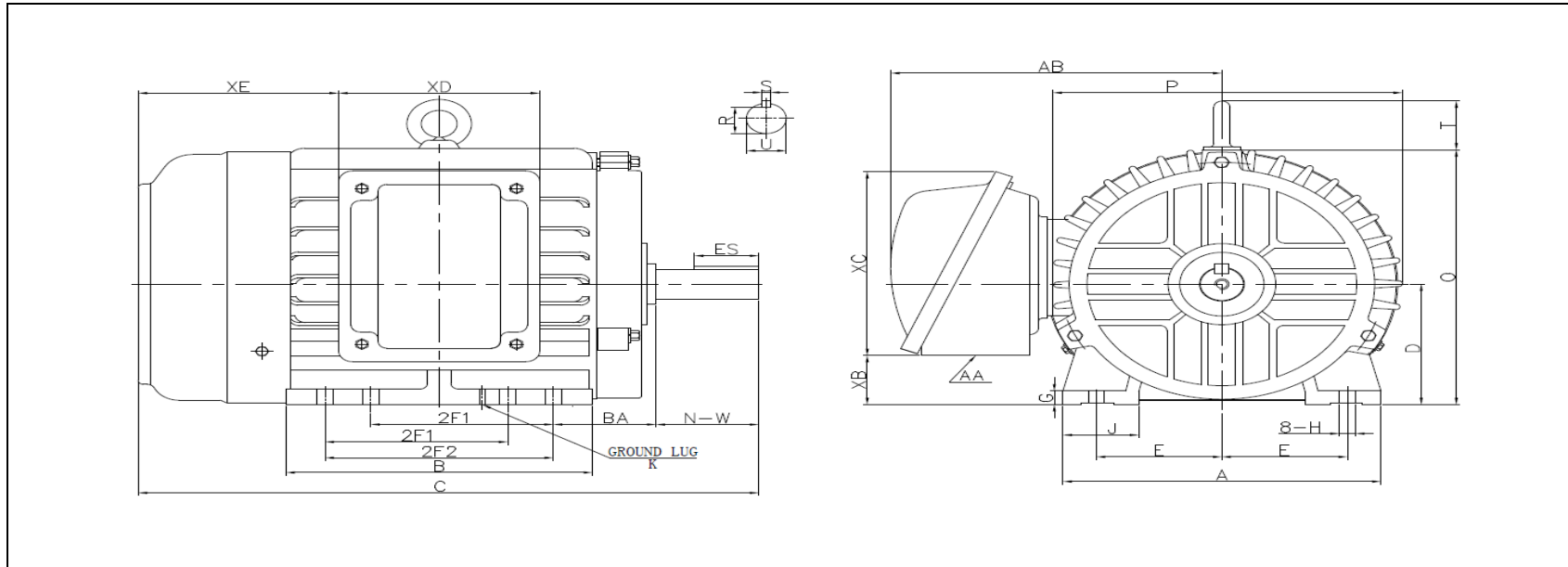
# MOTOR DRAWING

Premium Efficiency Motor: **LAM1.5-18-145T**

WorldWide Electric Corporation

1 (800) 808-2131

Worldwideelectric.net



## DIMENSION - INCHES

MOUNTING					A	B	C	D	G	J	P	O	T	AB
E	2F1	2F2	H	BA										
2.75	4	5	0.34	2.25	7	6.77	13.59	3.5	0.39	1.66	7.66	7.41	1.4	7.3

SHAFT & KEY				
S	ES	R	N-W	U
0.188	1.41	0.771	2.25	0.875

TERMINAL BOX				
AA	XB	XC	XD	XE
3/4 NPT	1.42	5.4	4.4	4.4

GROUND LUG
M5

# PERFORMANCE CURVES

Premium Efficiency Motor:

**LAM1.5-18-145T**

WorldWide Electric Corporation

1 (800) 808-2131

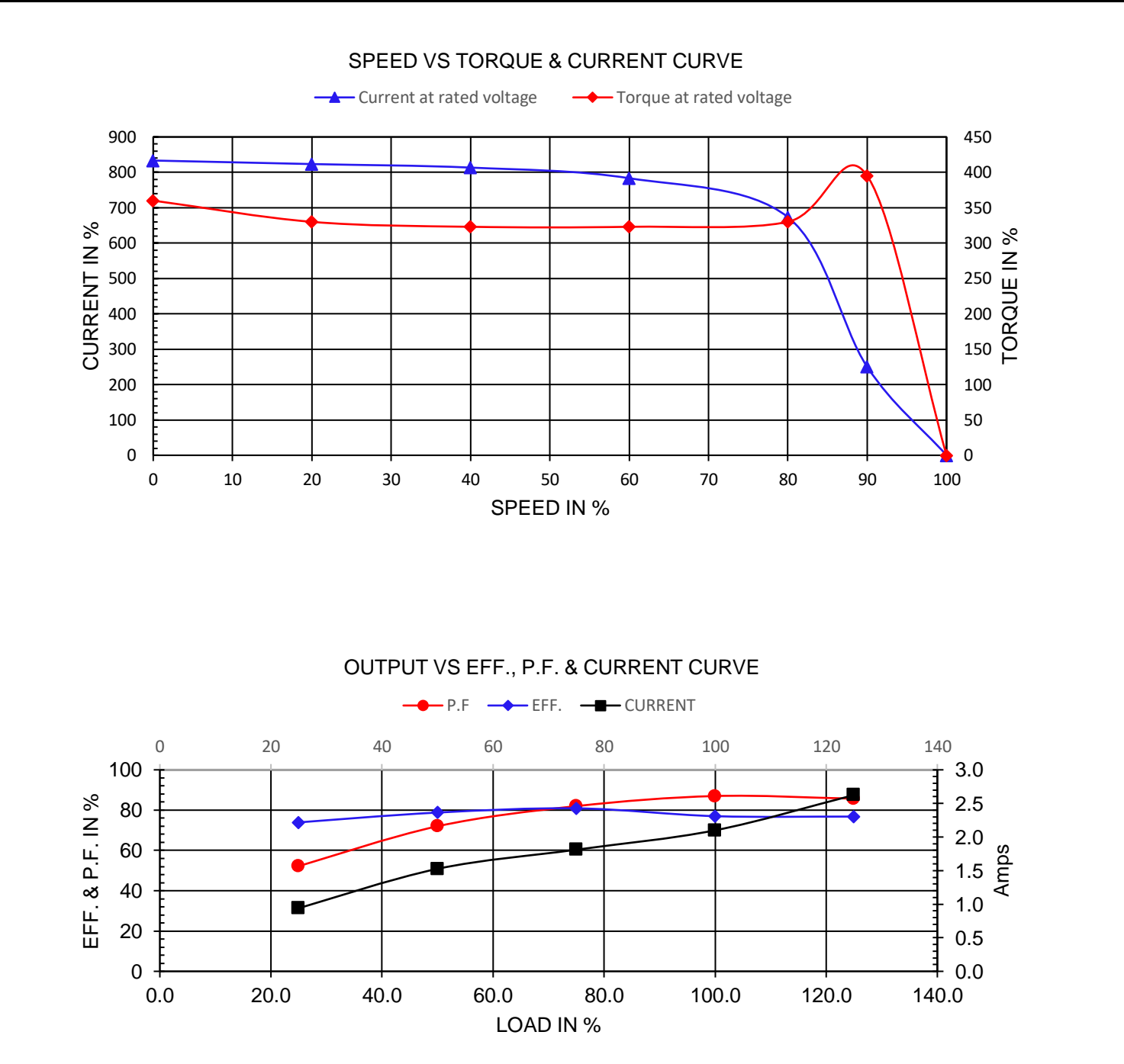
Worldwideelectric.net



Document Generated: 8-Sep-2023  
Document ID:

Customer:

Motor Type	AEH3		FL Speed	1730	
Output Rating (HP)	1.5		LRT (%FLT)	360	
Full Load Torque	4.44	lb.ft	460 volt FLA	2.1	
Rotor Wk <sup>2</sup>	0.086677	lb-ft <sup>2</sup>	230 volt FLA	4.2	
			BDT (%FLT)	395	



# NAMEPLATE / WIRING

Premium Efficiency Motor: **LAM1.5-18-145T**

WorldWide Electric Corporation

1 (800) 808-2131

Worldwideelectric.net



Document Generated: 8-Sep-2023  
Document ID:

Customer:

## SAMPLE NAMEPLATE DATA

		<b>THREE PHASE SEVERE DUTY MOTOR I EEE45</b>					
Model :		Encl :	Type :	SN :			4 — 5 — 6
HP :	Poles :	FR :	Ins :	Duty: Cont	IP :	Max Amb 40°C	7 8 9 1 2 3 L1 L2 L3
Hz :	CODE :	Hz :	Design :				230 V
Volts :	P.F. :	Volts :	DE BRG :				7 8 9 4 5 6
Amps :	Eff :	Amps :	ODE BRG :				1 2 3 L1 L2 L3
RPM :	S.F. :	RPM :	WT :				460 V
		S.F. :	RPM :	Date :			
CC306B				LOUIS ALLIS			
		A WORLDWIDE ELECTRIC COMPANY				UL certified Class I, Division II, Groups A,B,C,D T3B	

<b>Model:</b>	LAM1.5-18-145T	<b>Encl:</b>	TEFC	<b>Type:</b>	AEH3
<b>HP:</b>	1.5	<b>Poles</b>	4	<b>FR:</b>	143/5T
<b>Hz:</b>	60	<b>CODE:</b>	L	<b>Ins:</b>	F
<b>Volts:</b>	230/460	<b>P.F.:</b>	0.75	<b>HP:</b>	1.5
<b>Amps:</b>	4.2/2.1	<b>Eff:</b>	0.865	<b>Design:</b>	B
<b>RPM:</b>	1730	<b>S.F.:</b>	1.25	<b>DE BRG:</b>	6205 ZZ
				<b>ODE BRG:</b>	6204 ZZ
				<b>WT:</b>	55.1 lbs.
			<b>S.F.:</b>	1.00	