

DATA SHEET

Premium Efficiency Motor: **LAM2-12-184TC**

60 Hz

WorldWide Electric Corporation

1 (800) 808-2131

Worldwideelectric.net



Document Generated: 14-Sep-2023
Document ID:

Customer:

MOTOR INFORMATION	
HP	2
RPM	1200
Phase	3
Frequency	60Hz
Voltage	230/460
Frame Size	182/4TC
Enclosure	TEFC
Degree of Protection	IP55
Service Factor	1.25
Poles	6
Full Load Speed	1165
Insulation Class	F
Temp Rise	80°C
NEMA Code Letter	K
Duty Cycle	S1 / Continuous
Slip	2.92%
NEMA Design	B
Moment of Inertia	0.365 lb.ft.^2
Locked Rotor Time (Hot)	12 seconds
Sound Pressure Level	67 dB(A)
Number of Starts	2 Cold/1 Hot
Max Ambient Temperature	40°C
Max Elevation	1000 m.a.s.l (3300 f.a.s.l)
Mounting	F1
Rotation	Bi-Directional
Area of Classification	Class 1 Division 2 Groups A,B,C,D T3B
Inverter Rating	10:1 CT / 20:1 VT
Standard	NEMA MG-1
Approvals	UL, CE, IEEE45, ABS

EFFICIENCY/POWER FACTOR		
LOAD	EFF	P. F.
100%	88.5 %	0.62
75%	88.2 %	0.54
50%	86.1 %	0.41

TORQUE		
FULL LOAD	LRT	BDT
8.95 lb.ft.	361 %	347 %

AMPERAGE INFORMATION		
	230V	460V
Full Load Amps	6.8A	3.4
Locked Rotor Amps	43.6A	21.8A
No Load Current	4.6A	2.3A
Usable at 208V		7.5 A

BEARING INFORMATION	
DE Bearing	6306 ZZ
ODE Bearing	6305 ZZ
Grease Type	NSK SN7
DE Regreasing Interval	-- Hours
ODE Regreasing Interval	-- Hours
Grease Quantity	--

ADDITIONAL DATA	
F2 Suitable	Yes
Shaft Material	AISI 1045
Connection Diagram	9 Lead Wye
Approximate Weight	99.7 lbs.

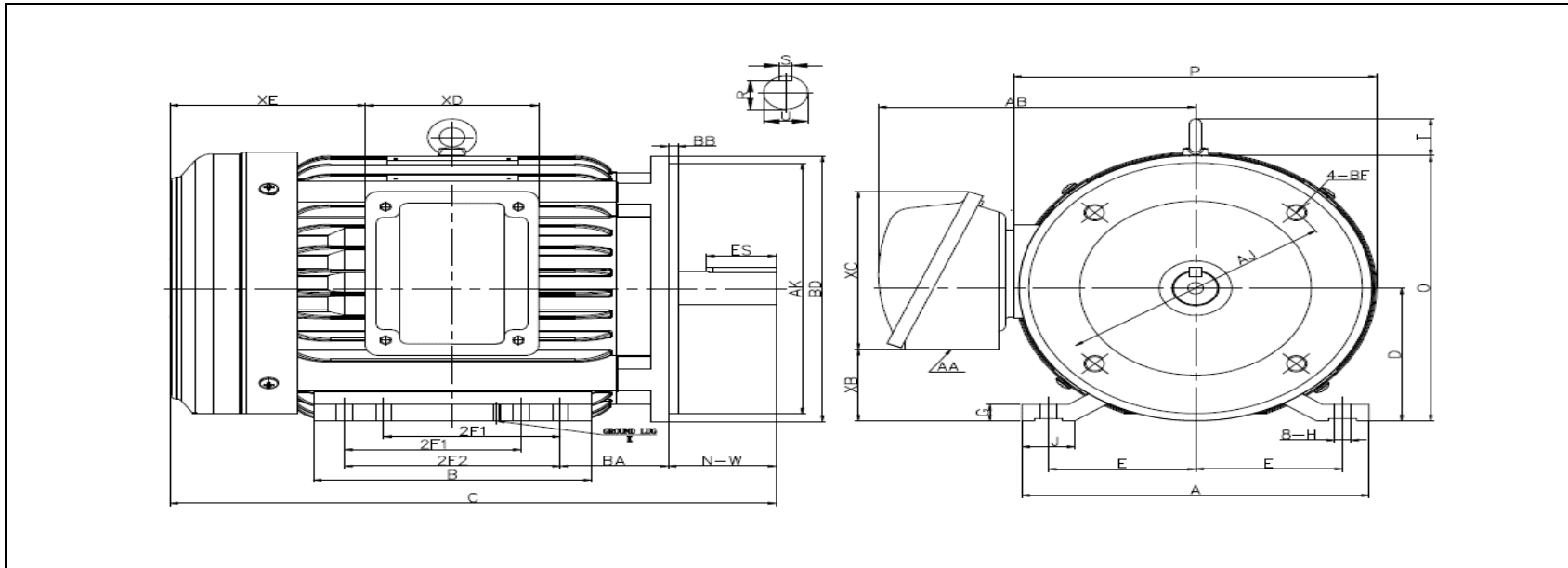
MOTOR DRAWING

Premium Efficiency Motor: **LAM2-12-184TC**

WorldWide Electric Corporation

1 (800) 808-2131

Worldwideelectric.net



DIMENSION - INCHES

MOUNTING					A	B	C	D	G	P	O	T	AB
E	2F1	2F2	H	BA									
3.75	4.5	5.5	0.41	2.75	8.82	7	15.8	4.5	0.64	9.37	9.17	1.4	7.5

SHAFT & KEY				
S	ES	R	N-W	U
0.25	1.78	0.986	2.75	1.125

TERMINAL BOX				
AA	XB	XC	XD	XE
3/4 NPT	2.45	5.2	4.4	4.9

GROUND LUG
M5

FLANGE				
AK	BD	AJ	BF	BB
8.5	9	7.25	4*1/2-13	0.25

PERFORMANCE CURVES

WorldWide Electric Corporation

1 (800) 808-2131

Worldwideelectric.net

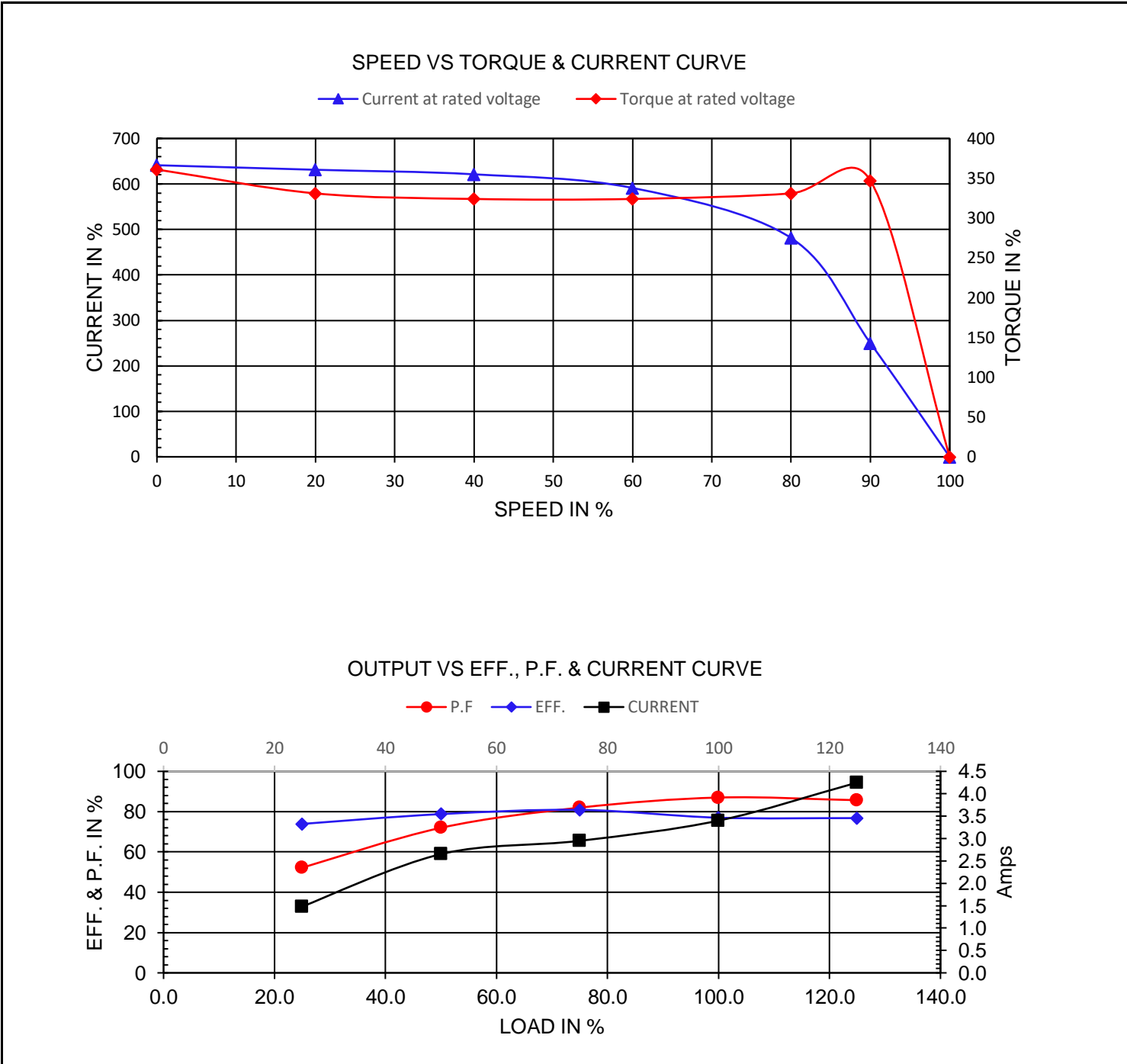


Premium Efficiency Motor:

LAM2-12-184TC

Document Generated: 14-Sep-2023	Customer:
Document ID:	

Motor Type	LAM		FL Speed	1165	
Output Rating (HP)	2		LRT (%FLT)	361	
Full Load Torque	8.95	lb.ft	460 volt FLA	3.4	
Rotor Wk ²	0.365	lb-ft ²	230 volt FLA	6.8A	
			BDT (%FLT)	347	



NAMEPLATE / WIRING

Premium Efficiency Motor: **LAM2-12-184TC**

WorldWide Electric Corporation

1 (800) 808-2131

Worldwideelectric.net



Document Generated: 14-Sep-2023
Document ID:

Customer:

SAMPLE NAMEPLATE DATA

		THREE PHASE SEVERE DUTY MOTOR							
Model :		Encl :	Type :		SN :				
HP :	Poles :	FR :	Ins:	Duty:	Cont	IP :	Max Amb 40°C		
Hz :		CODE :		Hz :		Design :			
Volts :		P.F :		Volts :		DE BRG :			
Amps :		Eff :		Amps :		ODE BRG :			
RPM :		S.F :		RPM :		WT :			
				S.F :		Date :			
CC306B				LOUIS ALLIS					UL certified Class I, Division II, Groups A,B,C,D T3B

Model:	LAM2-12-184TC	Encl:	TEFC	Type:	AEH3		
HP:	2	Poles	6	FR:	182/4TC	Ins:	F
Hz:	60	CODE:	K	Hz	50	HP:	2
Volts:	230/460	P.F:	0.62	Volts:	190/380	Design:	B
Amps:	6.8/3.4	Eff:	0.885	Amps	8.2/4.1	ODE BRG:	6305 ZZ
RPM:	1165	S.F:	1.25	RPM	940	WT:	99.7 lbs.
				S.F:	1.00		