



# WORLDWIDE ELECTRIC MOTOR DATA SHEET



## NAWSS12-18-56C

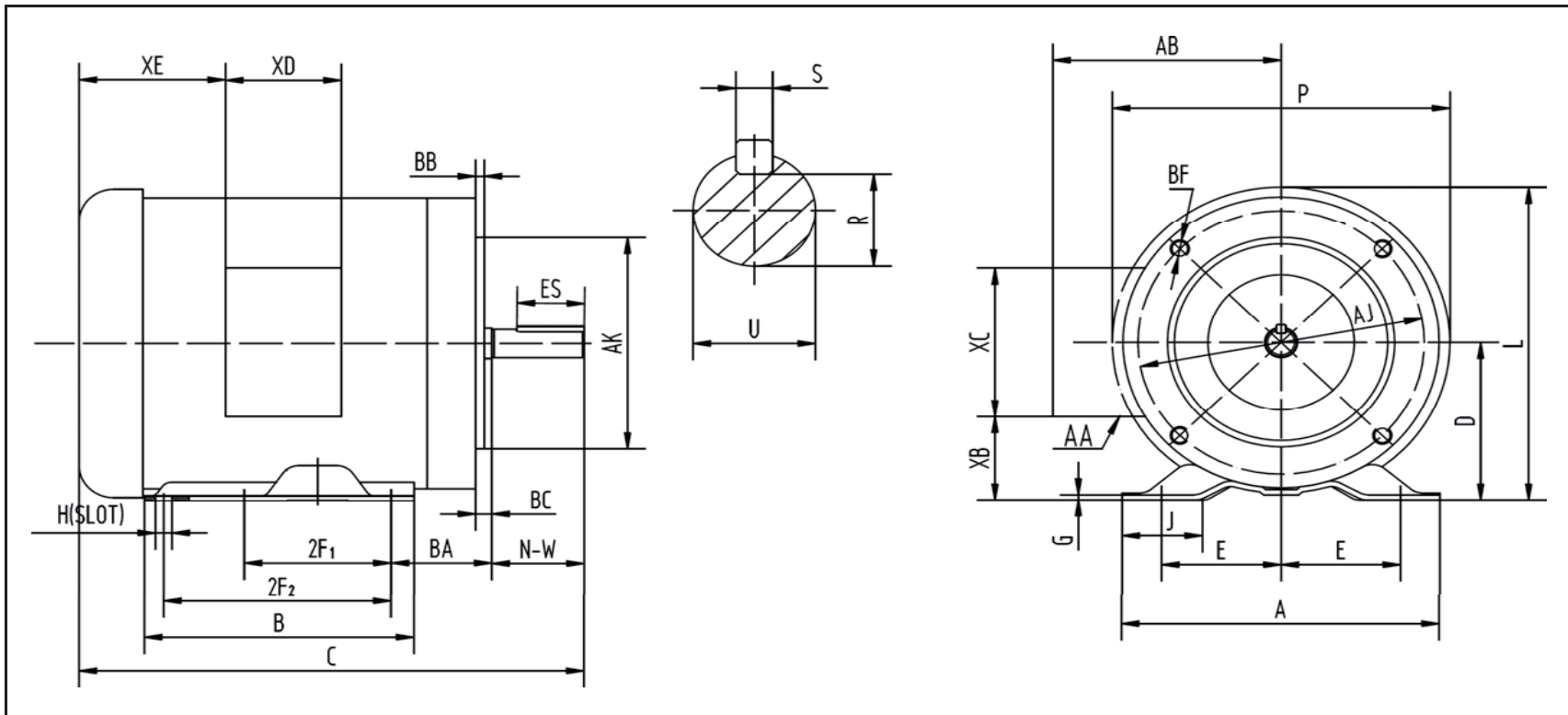
HORSEPOWER	1/2
RPM / POLES	1800 / 4
VOLTAGE / PHASE	230 / 460 V / 3
FRAME	56C
ENCLOSURE	TEFC / IP56
FREQUENCY	60 HZ
FULL LOAD SPEED	1740 RPM
SERVICE FACTOR	1.15
INSULATION CLASS	F
FULL LOAD AMPS	1.78 / 0.89 A
LOCKED ROTOR AMPS (STARTING)	20 / 10 A
NO LOAD CURRENT	1.4 / 0.7 A
EFFICIENCY (100% LOAD)	70.0%
POWER FACTOR (100% LOAD)	0.69
DUTY CYCLE	CONTINUOUS
FULL LOAD TORQUE	1.5 LB. FT.
LOCKED ROTOR TORQUE	210%
BREAKDOWN TORQUE	300%
DE BEARING	6205
ODE BEARING	6203
MOUNTING	F1
ROTATION	CW / CCW
BASE TYPE	C-FACE WITH FEET
SHAFT	KEYED
OVERLOAD	---
START CAPACITOR	---
RUN CAPACITOR	---
WIRE TYPE	LOOSE WIRE
WIRE HOUSING	JUNCTION BOX
ROTOR INERTIA	0.04702 LB. FT. <sup>2</sup>
SHAFT MATERIAL	304 STAINLESS STEEL
CONNECTION DIAGRAM	230 / 460 V - 9 LEAD
APPROXIMATE WEIGHT	27 LBS.
INVERTER RATING	2:1 CT / 5:1 VT PWM Type





WORLDWIDE ELECTRIC MOTOR DRAWING

NAWSS12-18-56C



MOUNTING					A	B	C	D	G	J	L	P	AA	AB
E	2F1	2F2	H	BA										
2.44	3	5	0.34	2.75	6.54	6.54	12.6	3.5	0.12	1.65	7.4	7.3	M22X1.5	5.52

BC	KEY		KEYSEAT	FLANGE			SHAFT	TERMINAL BOX					
	ES	S	R	AJ	AK	BB	BF	N-W	U	XB	XC	XD	XE
-0.19	1.41	0.188	0.517	5.875	4.5	0.16	3/8-16	1.88	0.625	1.85	3.39	3.82	2.05

ALL DIMENSIONS IN INCHES