

# DATA SHEET

Premium Efficiency Motor: **NT2-36-56CB**

**60 Hz**

WorldWide Electric Corporation

1 (800) 808-2131

Worldwideelectric.net



Document Generated: 22-Feb-2023  
Document ID:

Customer:

MOTOR INFORMATION	
HP	2
RPM	3600
Phase	1
Frequency	60 Hz
Voltage	115/230
Frame Size	56HC
Enclosure	TEFC
Degree of Protection	IP43
Service Factor	1.15
Poles	2
Full Load Speed	3450
Insulation Class	F
Temp Rise	80°C
NEMA Code Letter	K
Duty Cycle	S1 / Continuous
Slip	4.17%
Max Ambient Temperature	40°C
Max Elevation	1000 m.a.s.l (3300 f.a.s.l)
Mounting	F1
Rotation	Bi-Directional
Mounting Type	C-Face with Removable Base
Standard	NEMA MG-1
Approvals	CSA, CE
Overload	Automatic Overload

EFFICIENCY/POWER FACTOR		
LOAD	EFF	P. F.
100%	81.2 %	95.6
75%	81.6 %	95.2
50%	79.0 %	92.3

TORQUE		
FULL LOAD	LRT	BDT
3.06 lb.ft.	210 %	220 %

AMPERAGE INFORMATION		
	115V	230V
Full Load Amps	17	8.5
Locked Rotor Amps	132.4	66.2
No Load Current	8.87	4.435
Usable at 208V	9.5A	

BEARING INFORMATION	
DE Bearing	6203 2RS
ODE Bearing	6203 2RS

CAPACITOR INFORMATION	
Start Capacitor	(1)800uF/165V
Run Capacitor	(1)40uF/250V

ADDITIONAL DATA	
F2 Suitable	No
Shaft Material	1045 Carbon Steel
Connection Diagram	115/230V - 6 Lead
Approximate Weight	37 lbs.

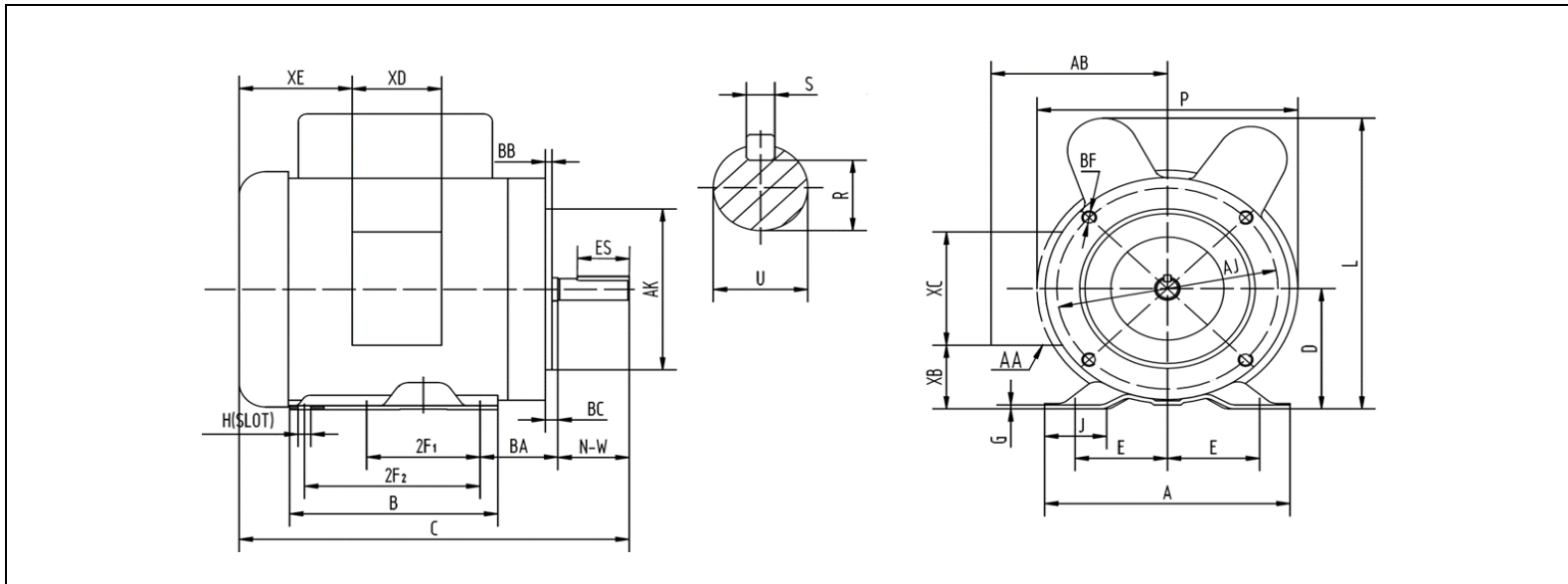
# MOTOR DRAWING

Premium Efficiency Motor: **NT2-36-56CB**

WorldWide Electric Corporation

1 (800) 808-2131

Worldwideelectric.net



## DIMENSION - INCHES

MOUNTING					A	B	C	D	G	L	P	AB	J
E	2F1	2F2	H	BA									
2.44	3	5	0.34	2.75	6.54	6.54	12.9	3.5	0.12	8.7	8.2	5.2	1.65

SHAFT & KEY				
R	ES	S	U	NW
0.517	1.41	0.188	0.625	1.88

TERMINAL BOX				
XB	XC	XD	XE	AA
1.65	3.7	3.2	2.15	3-0.88/2-1.109

FLANGE				
AK	AJ	BF	BB	BC
4.5	5.875	3/8-16	0.16	-0.19

# NAMEPLATE / WIRING

Premium Efficiency Motor: **NT2-36-56CB**

WorldWide Electric Corporation

1 (800) 808-2131

Worldwideelectric.net



Document Generated: 22-Feb-2023  
Document ID:

Customer:

## SAMPLE NAMEPLATE DATA

		<b>SINGLE PHASE INDUCTION MOTOR</b>			
<b>MODEL</b>	<b>FRAME 56C</b>	<b>LOW VOLTAGE</b>		<b>HIGH VOLTAGE</b>	
<b>Hz</b> 60	<b>ENCL. TEFC</b>	BLUE (T1)	] LINE1	BLUE (T1)	LINE1
<b>HP</b>	<b>PH 1</b>	ORANGE (T3)		ORANGE (T3)	] INS
<b>RPM</b>	<b>DUTY CONT</b>	RED (T8)	] LINE2	RED (T8)	
<b>VOLTS 115/230</b>	<b>CODE</b>	WHITE (T2)		WHITE (T2)	
<b>AMPS</b>	<b>INS. F IP43</b>	YELLOW (T4)	YELLOW (T4)	BLACK (T5)	BLACK (T5)
	<b>DES.</b>	BLACK (T5)			
<b>S. F. 1.15</b>	<b>LB/WT</b>	ACCEPTABLE FOR FIELD WIRING			
<b>SFA.</b>	<b>MAX. AMB. 40°C</b>	ROTATION CCW-OPE TO REVERSE EITHER VOLTAGE			
<b>DE/ODE BRG.</b>	<b>Date Code X X / X X X X</b>	INTERCHANGE BLACK (T5) AND RED (T8) LEADS			
		THERMALLY PROTECTED : NONE			
<b>SERIAL NO. XXXXXXXXXX</b>		<b>WorldWide Electric Corporation</b>			

**MADE IN CHINA**

<b>Model</b>	NT2-36-56CB	<b>Frame</b>	56HC
<b>Hz</b>	60 Hz	<b>Encl</b>	TEFC
<b>HP</b>	2	<b>PH</b>	1
<b>RPM</b>	3450	<b>DUTY</b>	CONT
<b>Voltage</b>	115/230	<b>Code</b>	K
<b>Amps</b>	17.0/8.5	<b>Ins Cl</b>	F
<b>S.F.</b>	1.15	<b>IP</b>	IP43
<b>SFA.</b>	19.6/9.8	<b>DES.</b>	L
<b>DE Brng</b>	6203 2RS	<b>WT:</b>	37 lbs.
<b>ODE Brng</b>	6203 2RS		