



WORLDWIDE ELECTRIC MOTOR DATA SHEET

OCCP15-18-254JM



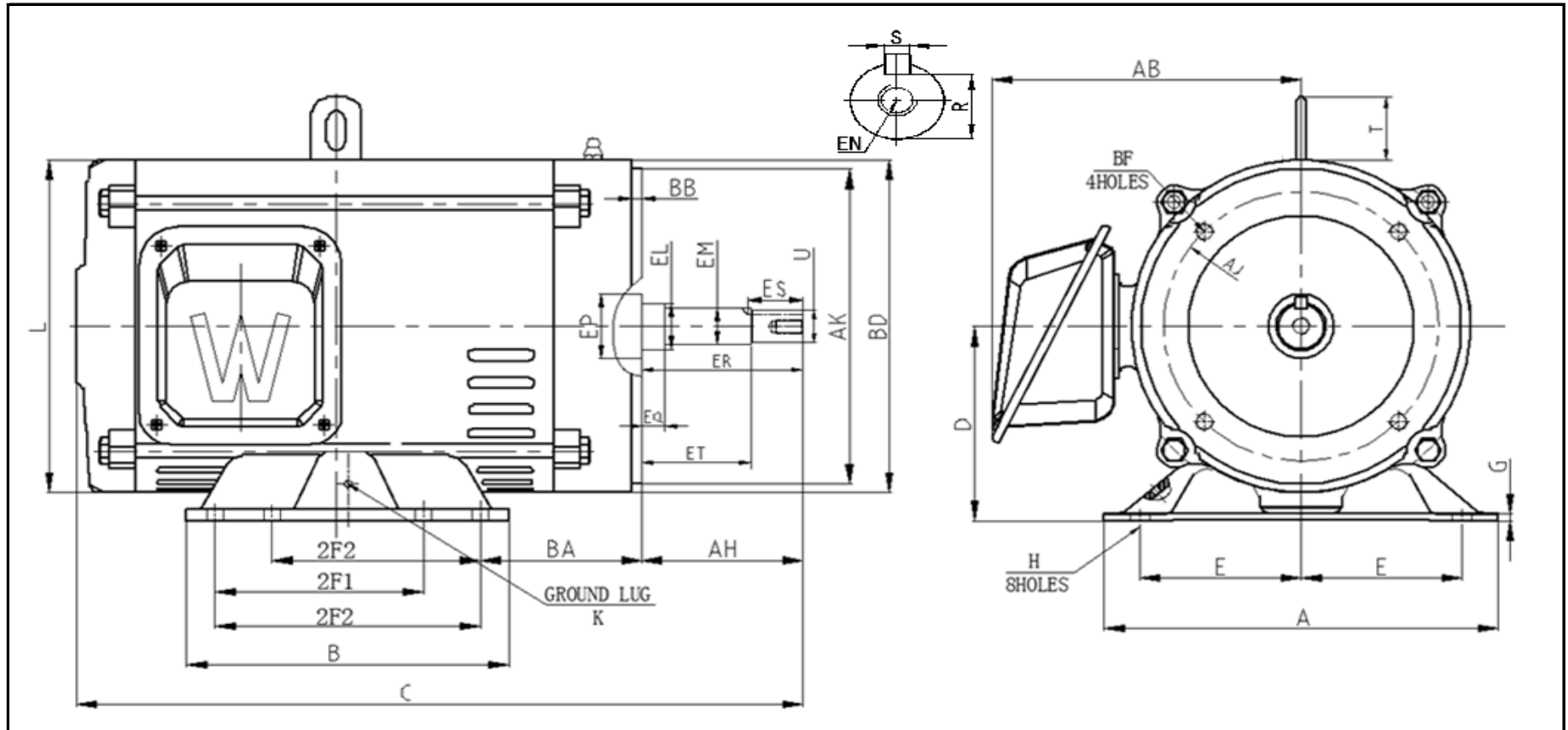
| | | | |
|---|--|-------------|-------------|
| HORSEPOWER | 15 | | |
| RPM / POLES | 1800 / 4 | | |
| VOLTAGE / PHASE | 208 - 230 / 460 V / 3 | | |
| FRAME | 254JM | | |
| ENCLOSURE / DEGREE OF PROTECTION | ODP / IP23 | | |
| FREQUENCY | 60 HZ Suitable For 50 HZ Operation With 1.0 SF | | |
| FULL LOAD SPEED | 1776 RPM | | |
| SERVICE FACTOR | 1.15 SF 60 HZ / 1.0 SF at 50 HZ | | |
| INSULATION CLASS | F | | |
| FULL LOAD AMPS; 230 / 460 | 34.2 / 17.1 A | | |
| LOCKED ROTOR AMPS (STARTING); 230 / 460 | 261.8 / 130.9 A | | |
| NO LOAD CURRENT | 10.2 / 5.1 A | | |
| NEMA CODE LETTER | H | | |
| EFFICIENCY / POWER FACTOR | <u>LOAD</u> | <u>EFF.</u> | <u>P.F.</u> |
| | 100% | 93.0% | 0.87 |
| | 75% | 93.3% | 0.84 |
| | 50% | 92.6% | 0.77 |
| DUTY CYCLE | S1 / Continuous | | |
| TORQUE | <u>FULL LOAD</u> | <u>LRT</u> | <u>BDT</u> |
| | 3.03 lb.ft. | 232.0% | 294.0% |
| | | | |
| SLIP | 1.356% | | |
| NEMA DESIGN | B | | |
| NUMBER OF STARTS (Hot / Cold) | 2 Hot / 3 Cold | | |
| MAX. AMBIENT TEMPERATURE | 40° C | | |
| MAX. ELEVATION | 3300 Ft. Above Sea Level | | |
| TEMPERATURE RISE (At Full Load) | 80° C | | |
| DE BEARING | 6309Z | | |
| ODE BEARING | 6307Z | | |
| GREASE TYPE | Multemp SRL | | |
| MOUNTING | F1 | | |
| ROTATION | Bi-Directional | | |
| APPROXIMATE WEIGHT | 214.9 Lbs. | | |
| AREA CLASSIFICATION | Non-Hazardous | | |
| INVERTER RATING | 10:1 CT / 20:1 VT PWM Type | | |
| SPECIFICATION - In Accordance With | NEMA, UR | | |



JULY 16, 2020

WORLDWIDE ELECTRIC MOTOR DRAWING

OCCP-254JM



DIMENSIONS - INCHES

| MOUNTING | | | | | A | B | C | D | G | AB | L | T | KEYSET | KEY | |
|----------|------|-----|------|------|-------|-------|-------|------|------|-----|------|------|--------|------|------|
| E | 2F1 | 2F2 | H | BA | | | | | | | | | R | ES | S |
| 5 | 8.25 | 10 | 0.53 | 4.75 | 12.05 | 11.57 | 23.94 | 6.25 | 0.47 | 9.7 | 10.6 | 2.48 | 1.1 | 2.53 | 0.25 |

| FLANGE | | | | | AH | SHAFT EXTENSION | | | | | | | | K |
|--------|------|---------------|-------|----|------|-----------------|-------|------|-------|------|----|--------------|------|----|
| AK | AJ | BF | BB | BD | | EL | EM | EP | EQ | ER | ET | EN | U | |
| 8.5 | 7.25 | 1/2-13 * 0.75 | 0.256 | 10 | 5.25 | 1.75 | 1.375 | 1.75 | 0.625 | 5.25 | 3 | 1/2-13 * 1.0 | 1.25 | M6 |