



WORLDWIDE ELECTRIC MOTOR DATA SHEET



OCCP5-36-182JM

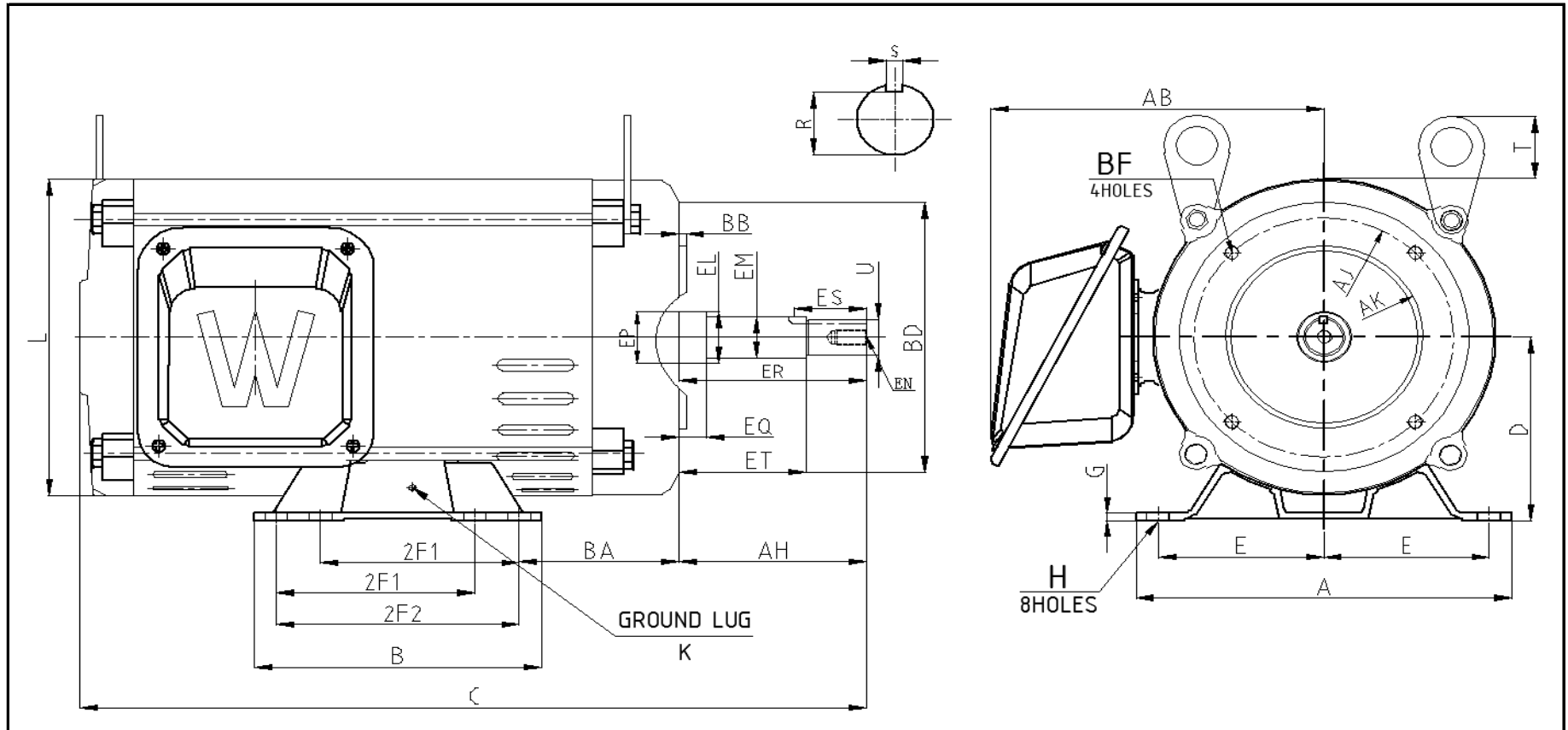
| | | | |
|---|--|-------------|-------------|
| HORSEPOWER | 5 | | |
| RPM / POLES | 3600 / 2 | | |
| VOLTAGE / PHASE | 208 - 230 / 460 V / 3 | | |
| FRAME | 182JM | | |
| ENCLOSURE / DEGREE OF PROTECTION | ODP / IP23 | | |
| FREQUENCY | 60 HZ Suitable For 50 HZ Operation With 1.0 SF | | |
| FULL LOAD SPEED | 3509 RPM | | |
| SERVICE FACTOR | 1.15 SF 60 HZ / 1.0 SF at 50 HZ | | |
| INSULATION CLASS | F | | |
| FULL LOAD AMPS; 230 / 460 | 11.8 / 5.9 A | | |
| LOCKED ROTOR AMPS (STARTING); 230 / 460 | 94.02 / 47.01 A | | |
| NO LOAD CURRENT | 3.64 / 1.82 A | | |
| NEMA CODE LETTER | J | | |
| EFFICIENCY / POWER FACTOR | <u>LOAD</u> | <u>EFF.</u> | <u>P.F.</u> |
| | 100% | 86.5% | 0.89 |
| | 75% | 89.1% | 0.86 |
| | 50% | 88.2% | 0.79 |
| DUTY CYCLE | S1 / Continuous | | |
| TORQUE | <u>FULL LOAD</u> | <u>LRT</u> | <u>BDT</u> |
| | 7.43 lb.ft. | 340.0% | 352.0% |
| | | | |
| SLIP | 2.534% | | |
| NEMA DESIGN | B | | |
| NUMBER OF STARTS (Hot / Cold) | 2 Hot / 3 Cold | | |
| MAX. AMBIENT TEMPERATURE | 40° C | | |
| MAX. ELEVATION | 3300 Ft. Above Sea Level | | |
| TEMPERATURE RISE (At Full Load) | 80° C | | |
| DE BEARING | 6307ZZ | | |
| ODE BEARING | 6305ZZ | | |
| GREASE TYPE | Multemp SRL | | |
| MOUNTING | F1 | | |
| ROTATION | Bi-Directional | | |
| APPROXIMATE WEIGHT | 66 | | |
| AREA CLASSIFICATION | Non-Hazardous | | |
| INVERTER RATING | 10:1 CT / 20:1 VT PWM Type | | |
| SPECIFICATION - In Accordance With | NEMA, UR | | |





WORLDWIDE ELECTRIC MOTOR DRAWING

OCCP-182JM



DIMENSIONS - INCHES

| MOUNTING | | | | | A | B | C | D | G | AB | L | T | KEYSET | | KEY | |
|----------|-----|-----|------|------|-----|-----|-------|-----|------|-----|-----|------|--------|------|-------|--|
| E | 2F1 | 2F2 | H | BA | | | | | | | | | R | ES | S | |
| 3.75 | 5.5 | 4.5 | 0.41 | 3.63 | 8.5 | 6.5 | 17.81 | 4.5 | 0.41 | 6.5 | 7.8 | 1.53 | 0.771 | 1.65 | 0.188 | |

| FLANGE | | | | | AH | SHAFT EXTENSION | | | | | | | | K |
|--------|-------|---------------|-------|------|------|-----------------|----|------|-------|------|-------|---------------|------|----|
| AK | AJ | BF | BB | BD | | EL | EM | EP | EQ | ER | ET | EN | U | |
| 4.5 | 5.875 | 3/8-16 * 0.56 | 0.156 | 6.63 | 4.25 | 1.25 | 1 | 1.25 | 0.625 | 4.25 | 2.875 | 3/8-16 * 0.75 | .875 | M5 |