

DATA SHEET

Premium Efficiency Motor: **ODP20-18-200-256T,**

60 Hz

WorldWide Electric Corporation

1 (800) 808-2131

Worldwideelectric.net



Document Generated: 12-Dec-2023
Document ID:

Customer:

MOTOR INFORMATION	
HP	20
RPM	1800
Phase	3
Frequency	60
Voltage	200
Frame Size	254/6T
Enclosure	ODP
Degree of Protection	IP23
Service Factor	1.15
Poles	4
Full Load Speed	1769
Insulation Class	F
Temp Rise	80°C
NEMA Code Letter	G
Duty Cycle	S1 / Continuous
Slip	1.72%
NEMA Design	B
Moment of Inertia	2.503 lb.ft.^2
Locked Rotor Time (Hot)	12 seconds
Sound Pressure Level	69 dB(A)
Number of Starts	2 Cold / 1 Hot
Max Ambient Temperature	40°C
Max Elevation	1000 m.a.s.l (3300 f.a.s.l)
Mounting	F1
Rotation	Bi-Directional
Area of Classification	Safe Area
Inverter Rating	10:1 CT / 20:1 VT
Standard	NEMA MG 1
Approvals	UL, CE

EFFICIENCY/POWER FACTOR		
LOAD	EFF	P. F.
100%	93.0 %	0.86
75%	94.4 %	0.84
50%	94.3 %	0.77

TORQUE		
FULL LOAD	LRT	BDT
59.67 lb.ft.	259 %	299 %

AMPERAGE INFORMATION	
	200V
Full Load Amps	53.59
Locked Rotor Amps	348.91A
No Load Current	16.054A

BEARING INFORMATION	
DE Bearing	6309Z
ODE Bearing	6307Z
Grease Type	Mobil Polyrex EM
DE Regreasing Interval	2400 Hours
ODE Regreasing Interval	3600 Hours
Grease Quantity	13g/8g

ADDITIONAL DATA	
F2 Suitable	Yes
Shaft Material	AISI 1045
Connection Diagram	6 Lead Delta
Approximate Weight	260.1 lbs.

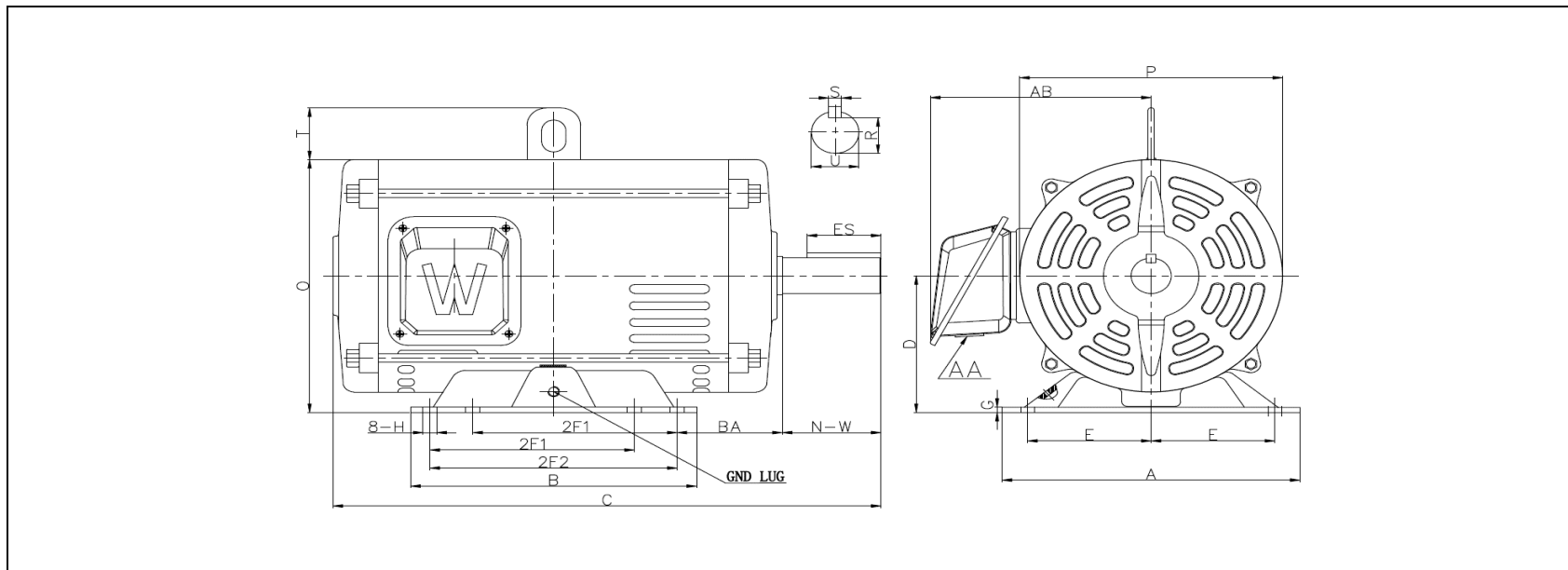
MOTOR DRAWING

Premium Efficiency Motor: **ODP20-18-200-256T**

WorldWide Electric Corporation

1 (800) 808-2131

Worldwideelectric.net



DIMENSION - INCHES

MOUNTING					A	B	C	D	G	P	O	T	AB
E	2F1	2F2	H	BA									
5	8.25	10	0.53	4.25	12.05	11.57	22.3	6.25	0.236	10.63	11.6	2.48	9.7

SHAFT & KEY				
S	ES	R	N-W	U
0.375	2.91	1.416	4	1.625

T-BOX	GND LUG
AA	
1.38	M6*P1.0

PERFORMANCE CURVES

WorldWide Electric Corporation

1 (800) 808-2131

Worldwideelectric.net



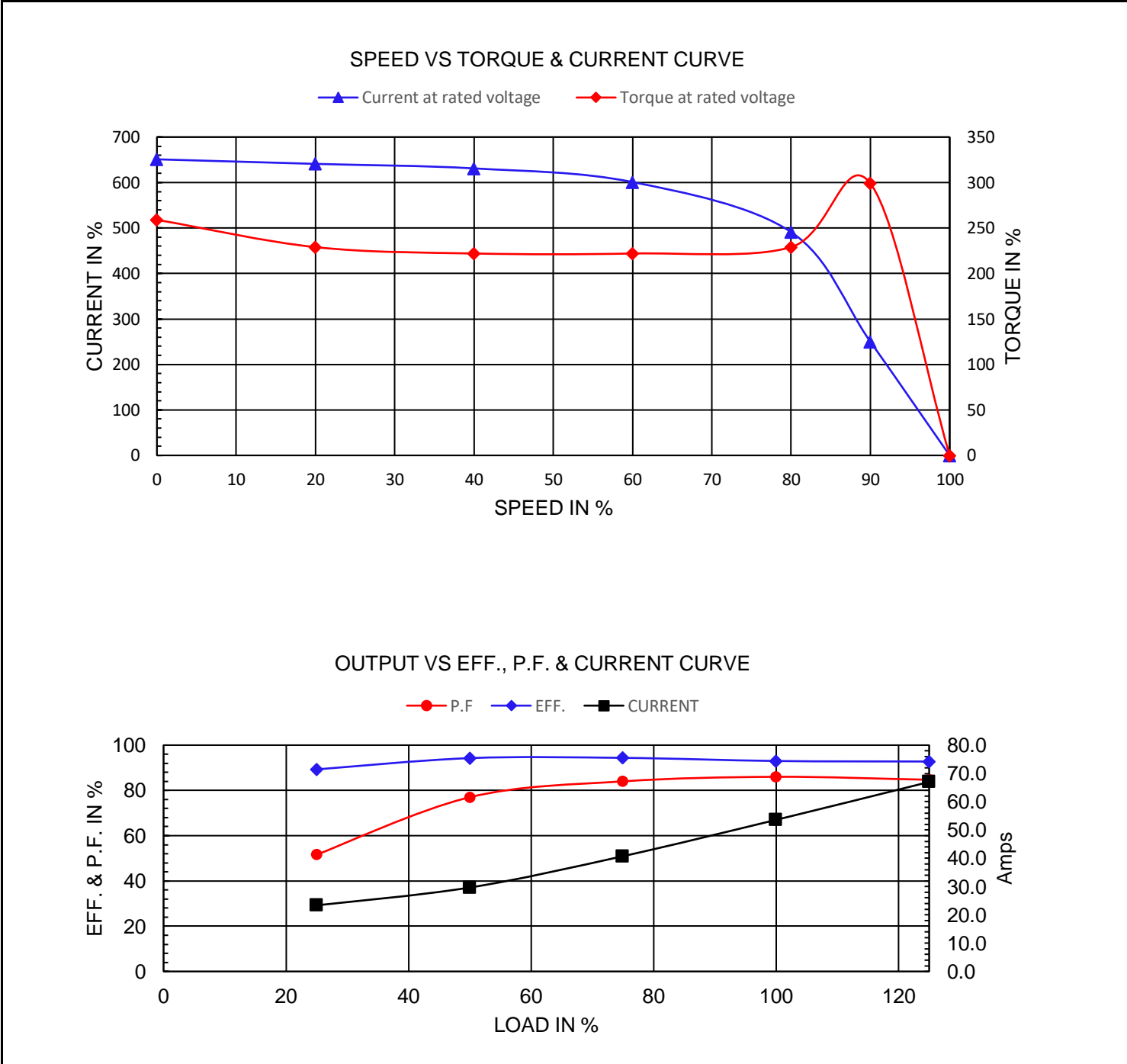
Premium Efficiency Motor:

ODP20-18-200-256T

Document Generated: 12-Dec-2023
Document ID:

Customer:

Motor Type	PEWWE		FL Speed	1769	
Output Rating (HP)	20		LRT (%FLT)	259	
Full Load Torque	59.67	lb.ft	200 volt FLA	53.59	
Rotor Wk ²	2.503	lb-ft ²	BDT (%FLT)	299	



NAMEPLATE / WIRING

WorldWide Electric Corporation

1 (800) 808-2131

Worldwideelectric.net





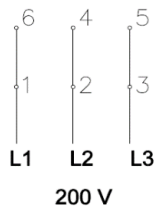


Premium Efficiency Motor: **ODP20-18-200-256T**

Document Generated: 12-Dec-2023
Document ID:

Customer:

SAMPLE NAMEPLATE DATA

		OPEN DRIP PROOF 3 PHASE MOTOR									
Model :		Encl :		SN :							
HP :	Poles :	FR :	Ins : F	IP 23	Max Amb 40°C	Duty:Cont					
Hz :				CODE:		Design :					
Volts :				P.F. :		DE BRG :					
Amps :				Eff :		ODE BRG :					
RPM :				S.F. :		WT :		Date :			
WorldWide Electric Corporation											

Model	ODP20-18-200-256T	Encl	ODP		
HP:	20	Poles:	4	FR:	254/6T
Hz:	60	Code:	G	Design	B
Volts:	200	P.F.:	0.86	DE BRG:	6309Z
Amps	53.59	Eff:	93.0%	ODE BRG:	6307Z
RPM	1769	S.F. :	1.15	WT:	260.1 lbs.
				Ins:	F