

# DATA SHEET

Premium Efficiency Motor: **PEWWE2-18-575-145T**

**60 Hz**

WorldWide Electric Corporation

1 (800) 808-2131

Worldwideelectric.net



Document Generated: 15-Feb-2023

Document ID:

Customer:

## MOTOR INFORMATION

HP	2
RPM	1800
Phase	3
Frequency	60 Hz
Voltage	575 V
Frame Size	145T
Enclosure	TEFC
Degree of Protection	IP55
Service Factor	1.25
Poles	4
Full Load Speed	1755
Insulation Class	F
Temp Rise	80°C
NEMA Code Letter	L
Duty Cycle	S1 / Continuous
Slip	2.50%
NEMA Design	B
Moment of Inertia	0.105 lb.ft.^2
Locked Rotor Time (Hot)	12 seconds
Sound Pressure Level	62 dB(A)
Number of Starts	2 Cold/ 1 Hot
Max Ambient Temperature	40°C
Max Elevation	1000 m.a.s.l (3300 f.a.s.l)
Mounting	F1
Rotation	Bi-Directional
Area of Classification	Class I, Division 2, Groups A, B, C, D
Inverter Rating	10:1 CT / 20:1 VT PWM Type
Standard	NEMA MG-1
Approvals	CSA-US, CE

## EFFICIENCY/POWER FACTOR

LOAD	EFF	P. F.
100%	86.5 %	0.73
75%	86.4 %	0.64
50%	83.8 %	0.51

## TORQUE

FULL LOAD	LRT	BDT
5.98 lb.ft.	270 %	350 %

## AMPERAGE INFORMATION

	575V	
Full Load Amps	2.37A	
Locked Rotor Amps	20A	
No Load Current	1.55A	

## BEARING INFORMATION

DE Bearing	6205ZZ C3
ODE Bearing	6205ZZ C3
Grease Type	SKF LGHP 2
DE Regreasing Interval	- Hours
ODE Regreasing Interval	- Hours

## ADDITIONAL DATA

F2 Suitable	Yes
Shaft Material	1045 Carbon Steel
Connection Diagram	575V - 3 Lead Y
Approximate Weight	56 lbs.

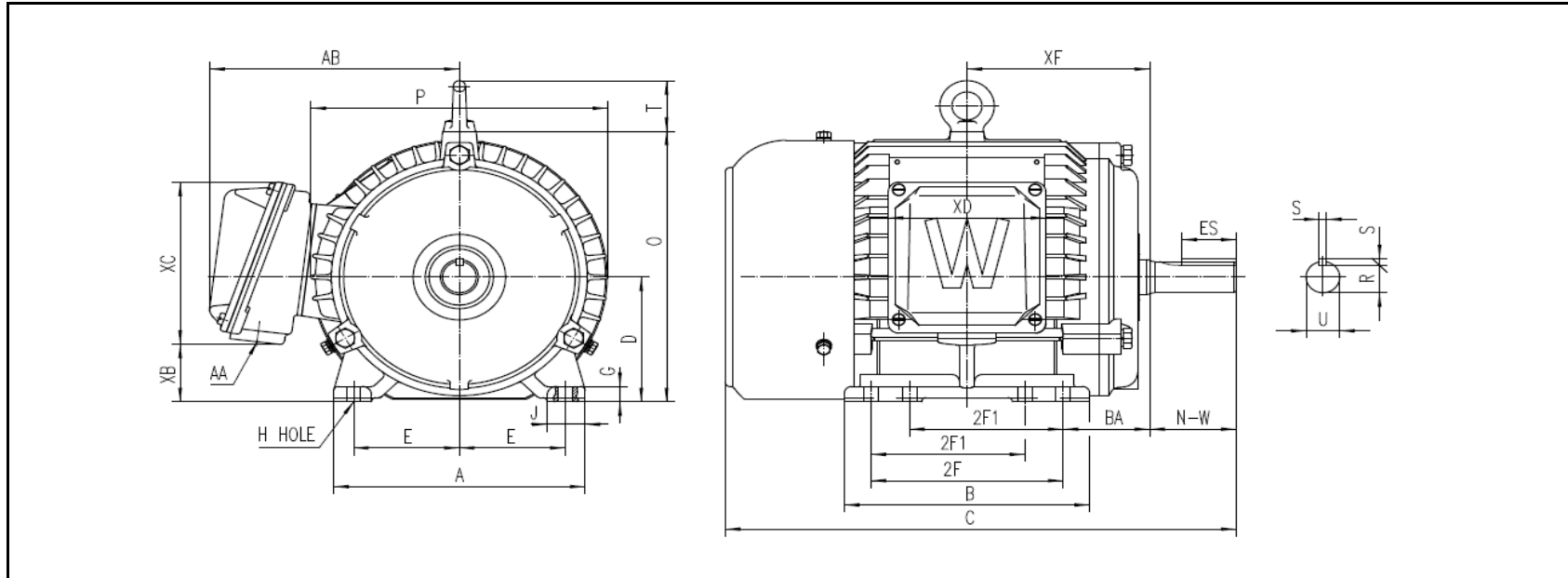
# MOTOR DRAWING

Premium Efficiency Motor: **PEWWE2-18-575-145T**

WorldWide Electric Corporation

1 (800) 808-2131

Worldwideelectric.net



## DIMENSION - INCHES

MOUNTING					A	B	C	D	G	J	P	O	T	AB
E	2F1	2F	H	BA										
2.75	4	5	0.34	2.25	6.535	6.378	13.276	3.5	0.433	0.984	7.717	7.6	1.417	6.491

SHAFT & KEY				
S	ES	R	N-W	U
0.188	1.41	0.771	2.25	0.875

TERMINAL BOX				
AA	XB	XC	XD	XF
0.75	1.61	4.55	4.094	4.748

# PERFORMANCE CURVES

WorldWide Electric Corporation

1 (800) 808-2131

Worldwideelectric.net



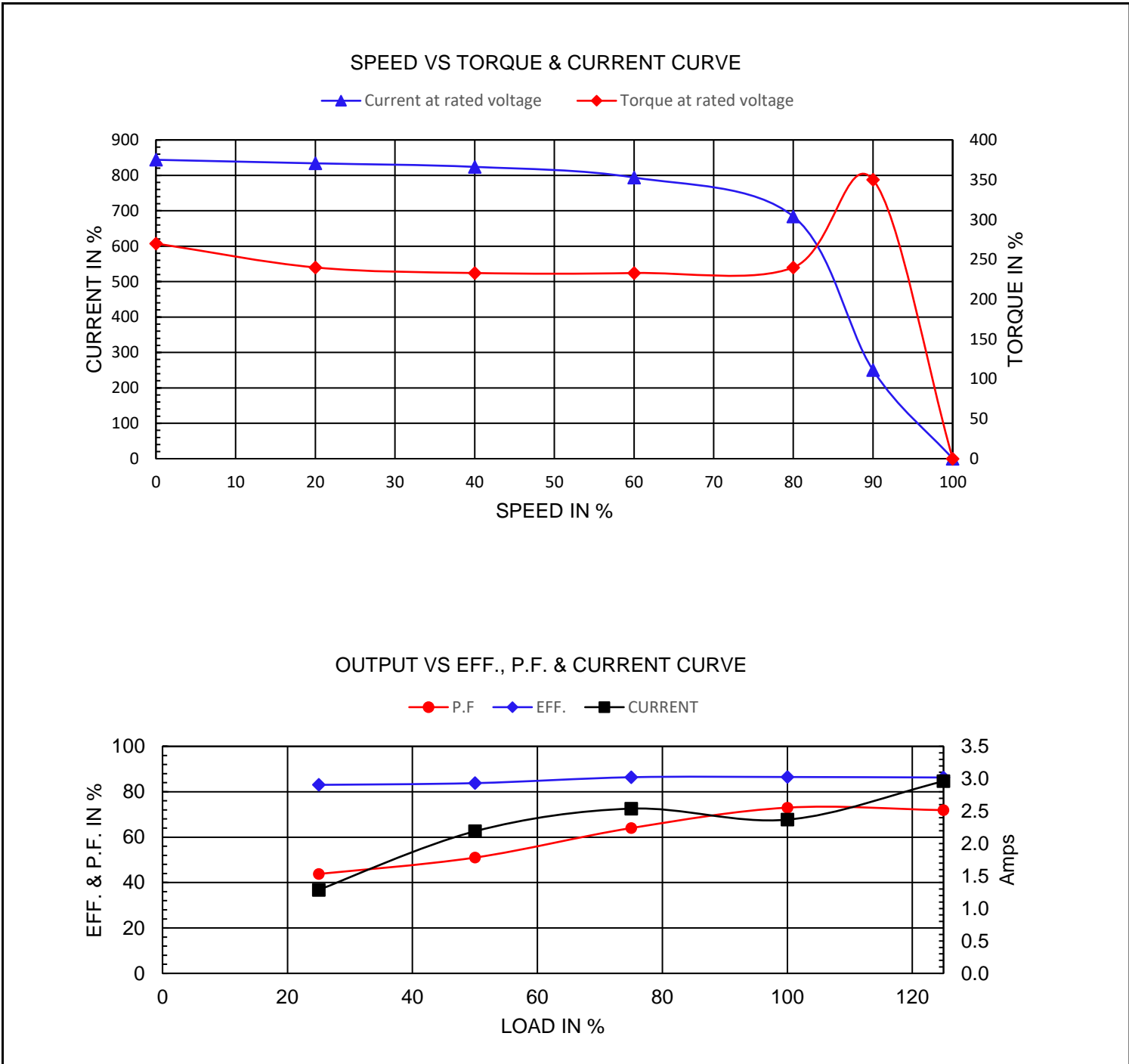
Premium Efficiency Motor:

**PEWWE2-18-575-145T**

Document Generated: 15-Feb-2023  
 Document ID:

Customer:

Motor Type	PEWWE			FL Speed	1755		
Output Rating (HP)	2			LRT (%FLT)	270		
Full Load Torque	270	lb.ft		BDT (%FLT)	350	575 Volt FLA	2.37A
Rotor Wk <sup>2</sup>	2.5	lb-ft <sup>2</sup>					



# NAMEPLATE / WIRING

WorldWide Electric Corporation

1 (800) 808-2131

Worldwideelectric.net



Premium Efficiency Motor: **PEWWE2-18-575-145T**

Document Generated: 15-Feb-2023  
Document ID:

Customer:

## SAMPLE NAMEPLATE DATA

	<b>NEMA Premium</b>	<b>3-PHASE INDUCTION MOTOR</b>	259277 	 CC006A		
Model	Ser No.					
HP	S.F.	IP	Encl	<b>Connection</b> ① ② ③ L1 L2 L3		
Frame	P.F.	Code	Type			
Voltage	Hz	Ins Cl	Rating °C Amb Cont			
Amps	RPM	Design	Date			
Nom. Eff.	FL	% 3/4	%	V	10:1 CT 20:1 VT PWM VFD 1.0SF	
Class I DIV. 2 Groups A B C D		Amb.40°C	T3C(160°C)	DE Brng		
Class I Zone 2 IIC		Amb.55°C	T3A(180°C)	ODE Brng		
				Grease type:		
50Hz		HP	V	A	rpm	S.F1.0
<b>WorldWide Electric Corporation</b>						

<b>Model</b>	PEWWE2-18-575-145T				
<b>HP</b>	2	<b>S.F.</b>	1.25	<b>IP</b>	IP55
<b>Frame</b>	145T	<b>P.F.</b>	0.73	<b>Code</b>	L
<b>Voltage</b>	575 V	<b>Hz</b>	60 Hz	<b>Ins Cl</b>	F
<b>Amps</b>	2.37A	<b>RPM</b>	1755	<b>Design</b>	B
<b>Nom. Eff.</b>	FL	86.5%	3/4	86.4%	
<b>Encl</b>	TEFC				
<b>Amb.</b>	40°C				
<b>DE Brng</b>	6205ZZ C3				
<b>ODE Brng</b>	6205ZZ C3				

50Hz	2 HP	500 V	2.85 A	1450 RPM
------	------	-------	--------	----------