

DATA SHEET

WorldWide Electric Corporation

1 (800) 808-2131

Worldwideelectric.net



Premium Efficiency Motor: **WPEVHS40-18-324TP-16.5,**

60 Hz

Document Generated: 11-May-2022
Document ID:

Customer:

MOTOR INFORMATION

HP	40
RPM	1800
Phase	3
Frequency	60 Hz
Voltage	230/460
Frame Size	324TP
Enclosure	ODP - WPI
Degree of Protection	IP23
Service Factor	1.15
Poles	4
Full Load Speed	1785
Insulation Class	F
Temp Rise	80°C
NEMA Code Letter	F
Duty Cycle	S1 / Continuous
Slip	0.93%
NEMA Design	B
Moment of Inertia	11.4 lb.ft.^2
Locked Rotor Time (Hot)	58 seconds
Sound Pressure Level	91 dB(A)
Number of Starts	3 Cold / 2 Hot
Max Ambient Temperature	40°C
Max Elevation	1000 m.a.s.l (3300 f.a.s.l)
Mounting	V1
Rotation	CCW - with Anti-Reverese Ratchet
Area of Classification	Safe
Inverter Rating	10:1 VT
Standard	NEMA MG-1
Approvals	CSA

EFFICIENCY/POWER FACTOR

LOAD	EFF	P. F.
100%	94.1 %	0.87
75%	93.9 %	0.84
50%	92.8 %	0.77

TORQUE

FULL LOAD	LRT	BDT
117 lb.ft.	201 %	264 %

AMPERAGE INFORMATION

	230V	460V
Full Load Amps	92A	46A
Locked Rotor Amps	561.2A	280.6A
No Load Current	33A	16.5A

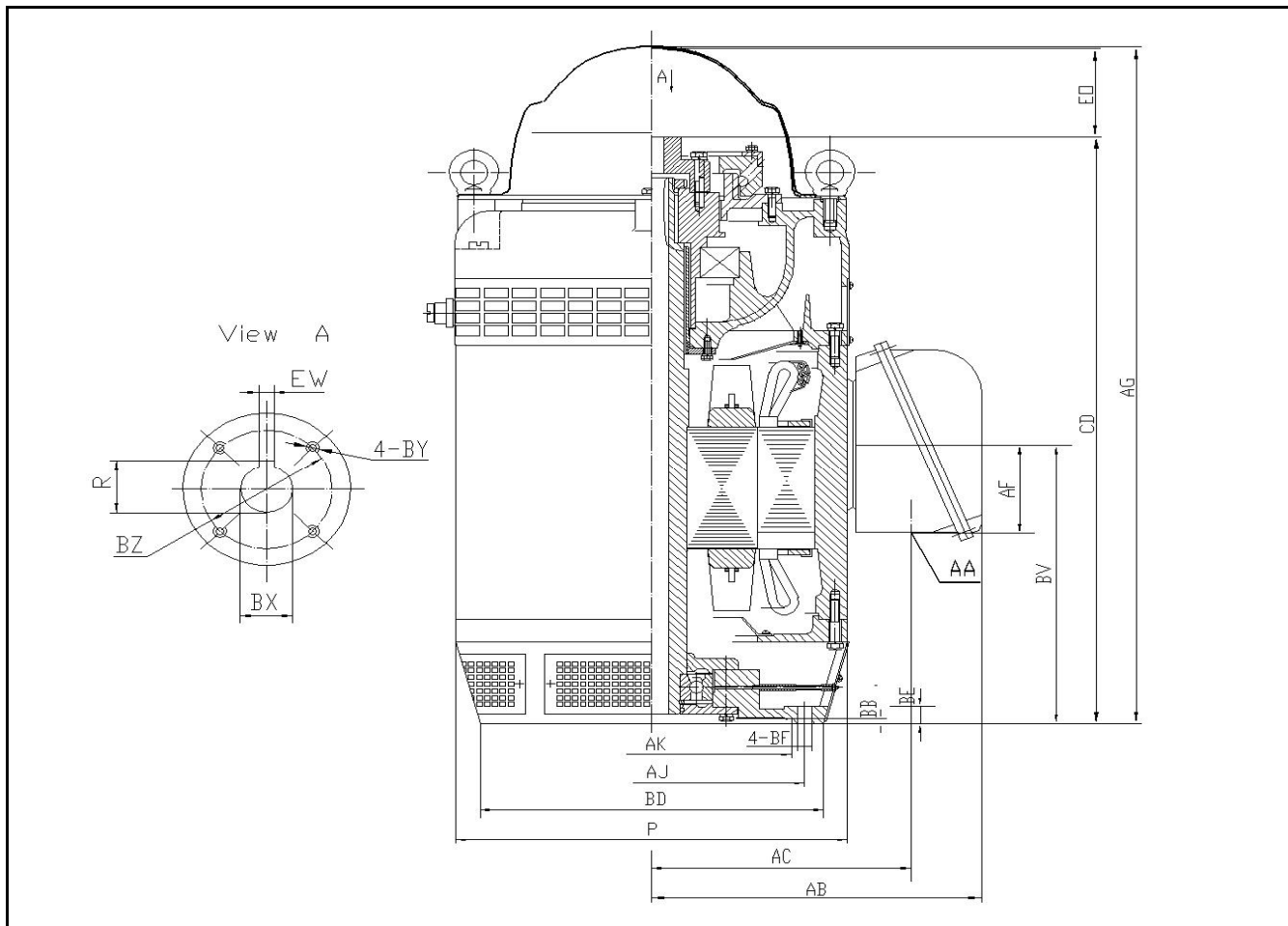
BEARING INFORMATION

Lower (DE) Bearing	6213-C3
Upper (ODE) Bearing	7221B
DE Lubrication Type	Mobil Polyrex EM
ODE Lubrication Type	ISO VC 32 Oil
DE Regreasing Interval	3800 Hours
ODE Regreasing Interval	3800 Hours
Lubrication Quantity	40g / 2.34qt

ADDITIONAL DATA

Down Thrust	5500 lbs
Shaft Material	45 Carbon Steel
Connection Diagram	12 Lead 2Δ/Δ
Approximate Weight	761 lbs.

324TP - 16.5 BD



DIMENSIONS - INCHES

COUPLING - STANDARD BORE				
BX	EW	R	BY	BZ
1-1/4	1/4	1.367	1/4-20	1-3/4

OVERALL			
P	AB	AG	BV
17.32	15.44	32.7	14.58

BASE						
AJ	AK	BB	BD	BF	EO	BE
14.75	13.5	0.25	16.5	4 * 0.69	4.22	0.79

CD	AC	AF	AA
28.22	11.65	5.83	3 NPT

PERFORMANCE CURVES

WorldWide Electric Corporation

1 (800) 808-2131

Worldwideelectric.net



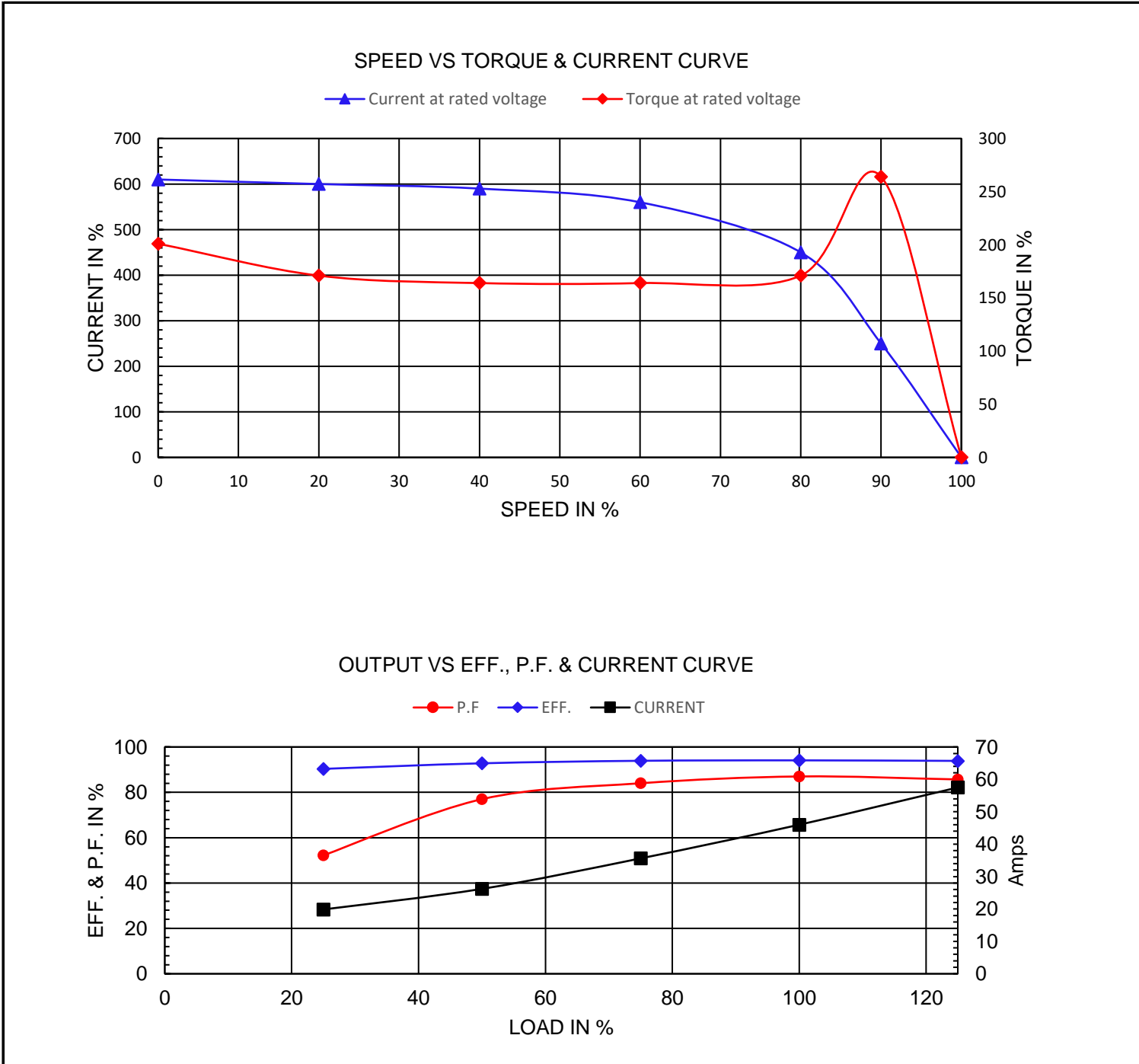
Premium Efficiency Motor:

WPEVHS40-18-324TP-16.5

Document Generated: 25-Jan-2023
Document ID:

Customer:

Motor Type	WPEVHS				
Output Rating (HP)	40	FL Speed	1785		
Full Load Torque	117 lb.ft	LRT (%FLT)	201	460 volt FLA	46A
Rotor Wk^2	94.1 lb-ft^2	BDT (%FLT)	264	230 volt FLA	92A



NAMEPLATE / WIRING

Premium Efficiency Motor: **WPEVHS40-18-324TP-16.5**

WorldWide Electric Corporation

1 (800) 808-2131




Worldwideelectric.net



Document Generated: 11-May-2022
Document ID:

Customer:

SAMPLE NAMEPLATE DATA

		PREMIUM EFFICIENCY THREE PHASE VHS MOTOR				CC326B														
Model:																				
Frame:	Ins Cl: F	Hz:	60	50	<table border="1"> <tr> <td colspan="2">230V</td> </tr> <tr> <td>T4</td><td>T9</td><td>T6</td></tr> <tr> <td>T8</td><td>T5</td><td>T7</td></tr> <tr> <td>T10</td><td>T11</td><td>T12</td></tr> <tr> <td>T2</td><td>T3</td><td>T1</td></tr> </table>		230V		T4	T9	T6	T8	T5	T7	T10	T11	T12	T2	T3	T1
230V																				
T4	T9	T6																		
T8	T5	T7																		
T10	T11	T12																		
T2	T3	T1																		
HP:	AMB. 40 C	Volt:	230/460	200/400	<table border="1"> <tr> <td colspan="2">460V</td> </tr> <tr> <td>T4</td><td>T5</td><td>T6</td></tr> <tr> <td>T7</td><td>T8</td><td>T9</td></tr> <tr> <td>T10</td><td>T11</td><td>T12</td></tr> <tr> <td>T2</td><td>T3</td><td>T1</td></tr> </table>		460V		T4	T5	T6	T7	T8	T9	T10	T11	T12	T2	T3	T1
460V																				
T4	T5	T6																		
T7	T8	T9																		
T10	T11	T12																		
T2	T3	T1																		
Duty: CONT	Lbs.	Amps:			MADE IN CHINA															
Nominal Eff:		RPM:																		
Encl: WPI DP		SF:																		
DE/ODE Brng:		SFA:	A	A																
S/N		LRA:	A	A																
Down thrust rating:					lbs.															
Inverter Rated 10:1 VT ROTATION 																				
WORLDWIDE ELECTRIC CORPORATION																				

Model	WPEVHS40-18-324TP-16.5		60 Hz	50 Hz
Frame	324TP		Amps	92.0/46.0A
HP	40		RPM	1785
Nom.Eff.	94.1%		SF	1.15
DE/ODE Brng	6213-C3	7221B	SFA	104/52A
Down Thrust	5500 lbs		LRA	561.2/280.6A
				618/309A