



WORLDWIDE ELECTRIC MOTOR DATA SHEET



WSS34-18-56CRD

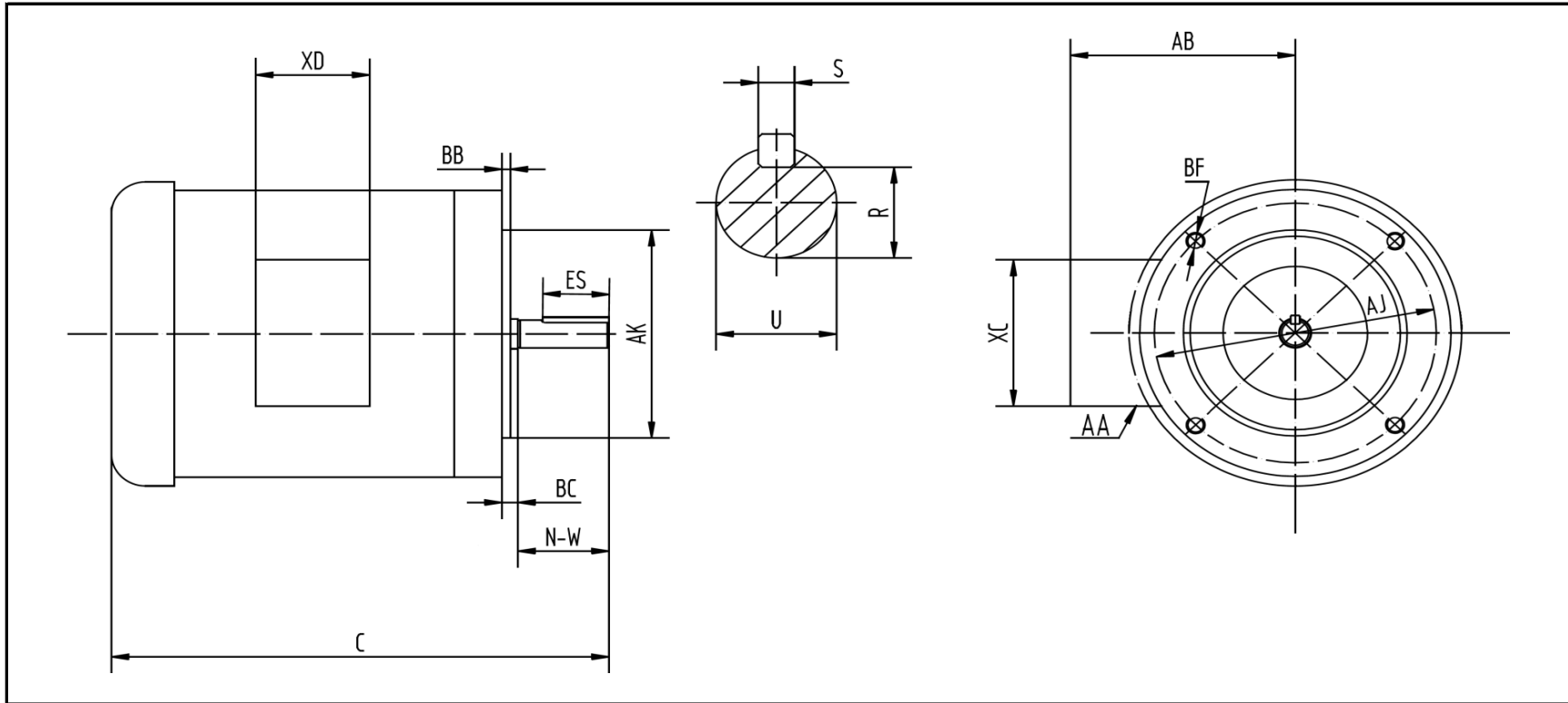
HORSEPOWER	3/4
RPM / POLES	1800 / 4
VOLTAGE / PHASE	230 / 460 V / 3
FRAME	56C
ENCLOSURE	TEFC / IP56
FREQUENCY	60 HZ
FULL LOAD SPEED	1725 RPM
SERVICE FACTOR	1.15
INSULATION CLASS	F
FULL LOAD AMPS	2.4 / 1.2 A
LOCKED ROTOR AMPS (STARTING)	14.4 / 7.2 A
NO LOAD CURRENT	0.88 / 0.44 A
EFFICIENCY (100% LOAD)	82.5%
POWER FACTOR (100% LOAD)	0.78
DUTY CYCLE	CONTINUOUS
FULL LOAD TORQUE	2.2 LB. FT.
LOCKED ROTOR TORQUE	227%
BREAKDOWN TORQUE	320%
DE BEARING	6205 DDU
ODE BEARING	6205 DDU
MOUNTING	F1
ROTATION	CW / CCW
BASE TYPE	C-FACE - ROUND BODY
SHAFT	KEYED
OVERLOAD	---
START CAPACITOR	---
RUN CAPACITOR	---
WIRE TYPE	LOOSE WIRE
WIRE HOUSING	JUNCTION BOX
ROTOR INERTIA	0.08104 LB. FT. ²
SHAFT MATERIAL	304 STAINLESS STEEL
CONNECTION DIAGRAM	230 / 460 V - 9 LEAD Y
APPROXIMATE WEIGHT	33 LBS.
INVERTER RATING	2:1 CT / 5:1 VT PWM Type





WORLDWIDE ELECTRIC MOTOR DRAWING

WSS34-18-56CRD



C	AA	AB	BC	KEY		KEYSEAT
				ES	S	R
12.66	0.86	5.39	0.19	1.41	0.188	0.517

FLANGE				SHAFT		TERMINAL BOX	
AJ	AK	BB	BF	N-W	U	XC	XD
5.875	4.5	0.16	3/8-16	1.88	0.625	4.72	3.82

ALL DIMENSIONS IN INCHES

REVISED - 09/29/15